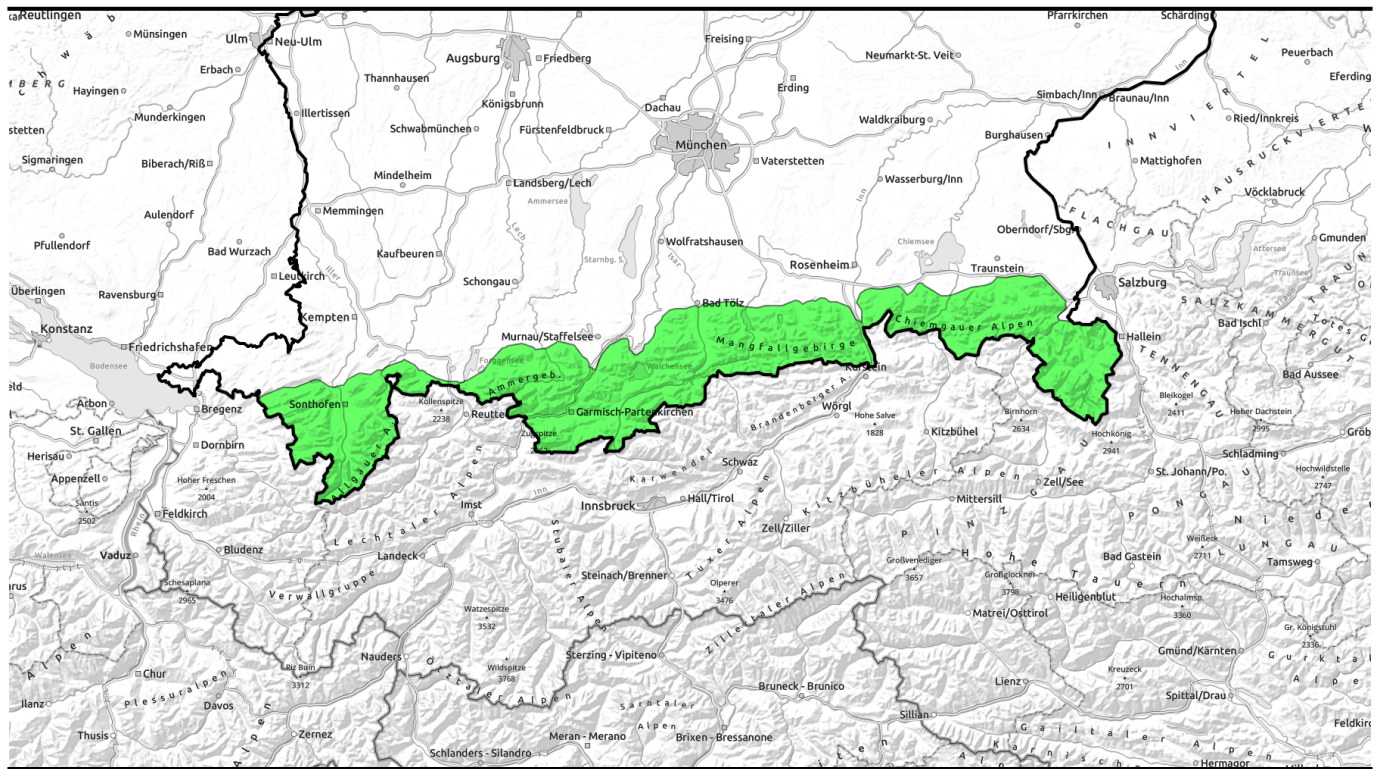


20.01.2022, morning



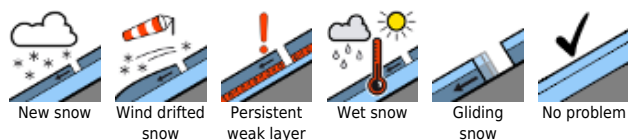
Avalanche danger increasing above treeline to moderate in the course of the day, due to new snow



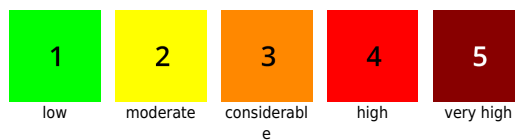
Ammergauer Alpen, Bayerische Voralpen West, Allgäuer Hauptkamm, Werdenfeller Alpen, Bayerische Voralpen Mitte, Bayerische Voralpen Ost, Chiemgauer Alpen West, Chiemgauer Alpen Ost, Berchtesgadener Alpen, Allgäuer Vorberge



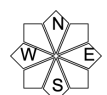
Avalanche problems



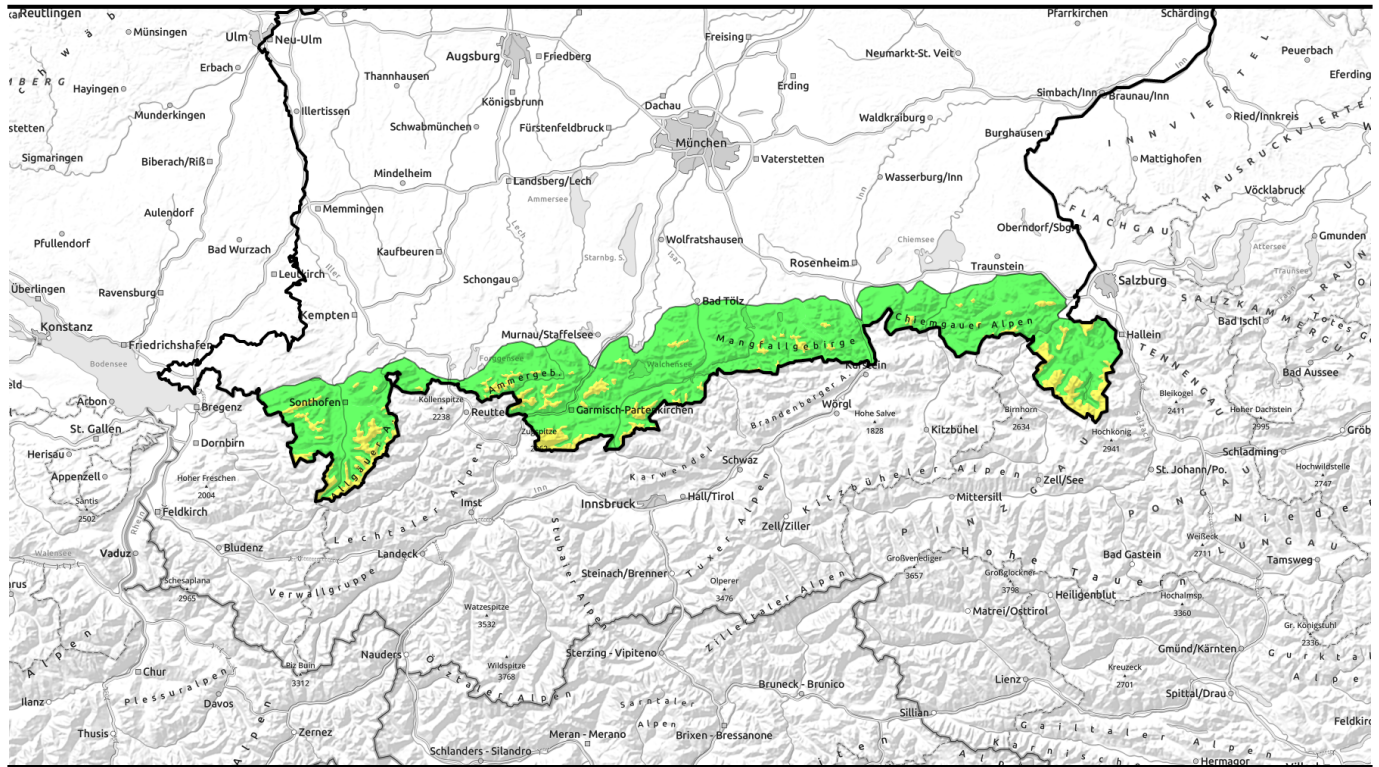
Danger ratings



Expositions



20.01.2022, afternoon



Mit zunehmenden Neuschneemengen steigt die Lawinengefahr im Tagesverlauf oberhalb der Waldgrenze auf mäßig an.

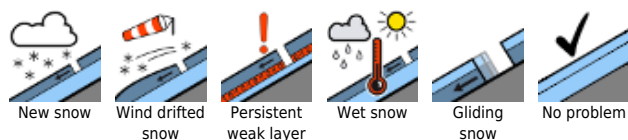


forestline

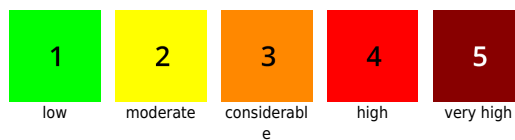
Ammergauer Alpen, Bayerische Voralpen West, Allgäuer Hauptkamm, Werdenfeller Alpen, Bayerische Voralpen Mitte, Bayerische Voralpen Ost, Chiemgauer Alpen West, Chiemgauer Alpen Ost, Berchtesgadener Alpen, Allgäuer Vorberge



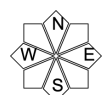
Avalanche problems



Danger ratings



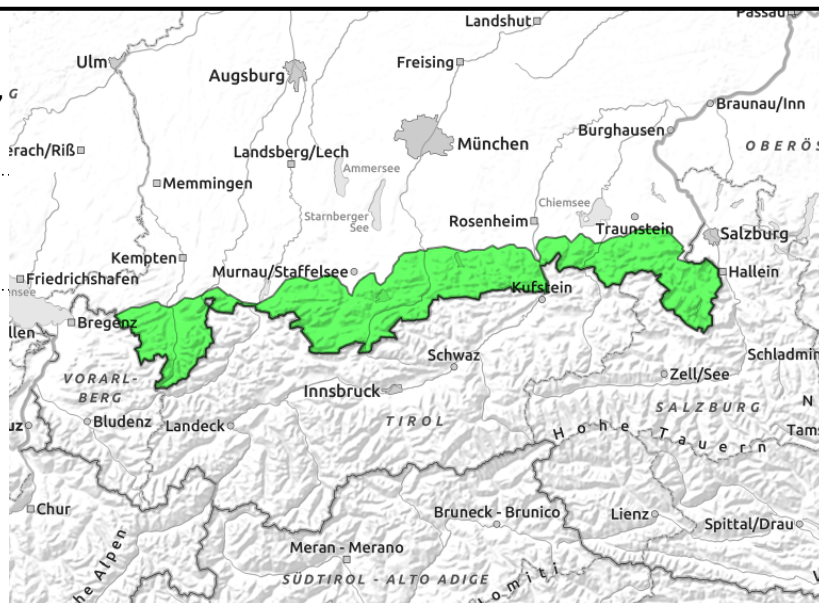
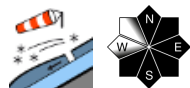
Expositions





20.01.2022, morning

Ammergauer Alpen, Bayerische Voralpen West, Allgäuer Hauptkamm, Werdenfeller Alpen, Bayerische Voralpen Mitte, Bayerische Voralpen Ost, Chiemgauer Alpen West, Chiemgauer Alpen Ost, Berchtesgadener Alpen, Allgäuer Vorberge



Heed trigger-sensitive snowdrift accumulations

Avalanche danger in the Bavarian Alps is low in the morning, rises to moderate above the treeline during the course of the day. The problem: fresh snowdrifts. Above the treeline in steep ridgeline terrain in N7E7SW aspects and in gullies and bowls, more and larger snowdrift accumulations are being formed. They can often be triggered by minimum additional loading, e.g. one single skier. Potential avalanches are mostly small-sized, but in the latter part of the day can grow to medium size.

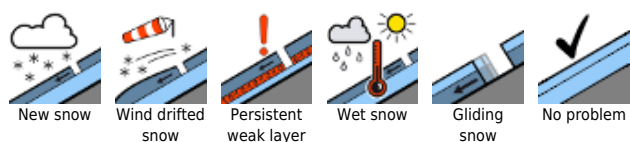
Snowpack structure

The old snowpack surface consists of powder snow or older snowdrifts, often with wind-crusts or melt-freeze crusts. During the course of the day, up to 20 cm of snowfall is possible which will be transported by strong NW winds. The freshly generated snowdrifts are often poorly bonded with the old snowpack surface. The snowpack itself has settled well and is stable. Overall its depth is below average, and at low altitudes there is no longer a solid base.

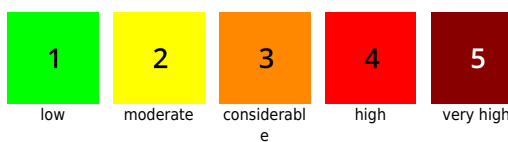
Outlook

Avalanche danger could rise further as the weekend nears, depending on amounts of new snow.

Avalanche problems



Danger ratings



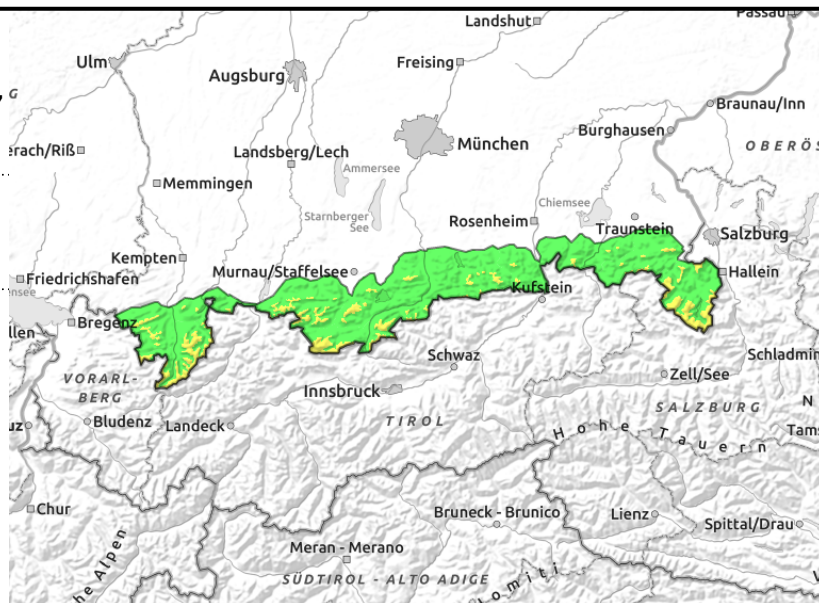
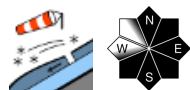
Expositions





20.01.2022, afternoon

Ammergauer Alpen, Bayerische Voralpen West, Allgäuer Hauptkamm, Werdenfeller Alpen, Bayerische Voralpen Mitte, Bayerische Voralpen Ost, Chiemgauer Alpen West, Chiemgauer Alpen Ost, Berchtesgadener Alpen, Allgäuer Vorberge



Heed trigger-sensitive snowdrift accumulations

Avalanche danger in the Bavarian Alps is low in the morning, rises to moderate above the treeline during the course of the day. The problem: fresh snowdrifts. Above the treeline in steep ridgeline terrain in N7E7SW aspects and in gullies and bowls, more and larger snowdrift accumulations are being formed. They can often be triggered by minimum additional loading, e.g. one single skier. Potential avalanches are mostly small-sized, but in the latter part of the day can grow to medium size.

Snowpack structure

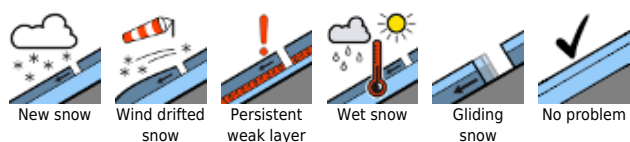
The old snowpack surface consists of powder snow or older snowdrifts, often with wind-crusts or melt-freeze crusts. During the course of the day, up to 20 cm of snowfall is possible which will be transported by strong NW winds. The freshly generated snowdrifts are often poorly bonded with the old snowpack surface. The snowpack itself has settled well and is stable. Overall its depth is below average, and at low altitudes there is no longer a solid base.

Outlook

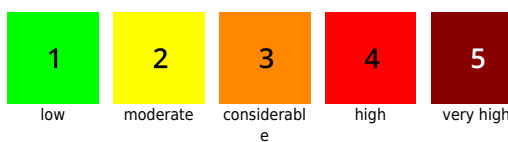
Avalanche danger could rise further as the weekend nears, depending on amounts of new snow.

Translated by Jeffrey McCabe, www.creativtrans.com

Avalanche problems



Danger ratings



Expositions

