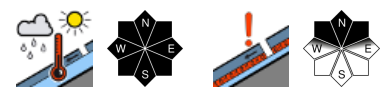


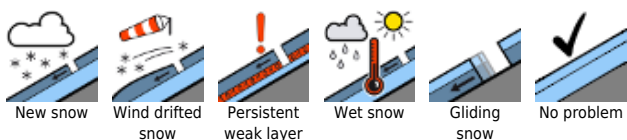
In general favorable avalanche conditions



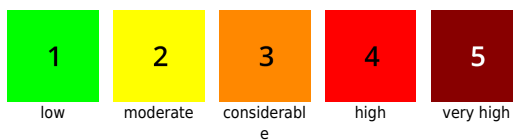
Allgäuer Vorberge, Allgäuer Hauptkamm, Ammergauer Alpen, Bayerische Voralpen West, Werdenfeller Alpen, Bayerische Voralpen Mitte, Bayerische Voralpen Ost, Chiemgauer Alpen West, Chiemgauer Alpen Ost, Berchtesgadener Alpen



Avalanche problems



Danger ratings

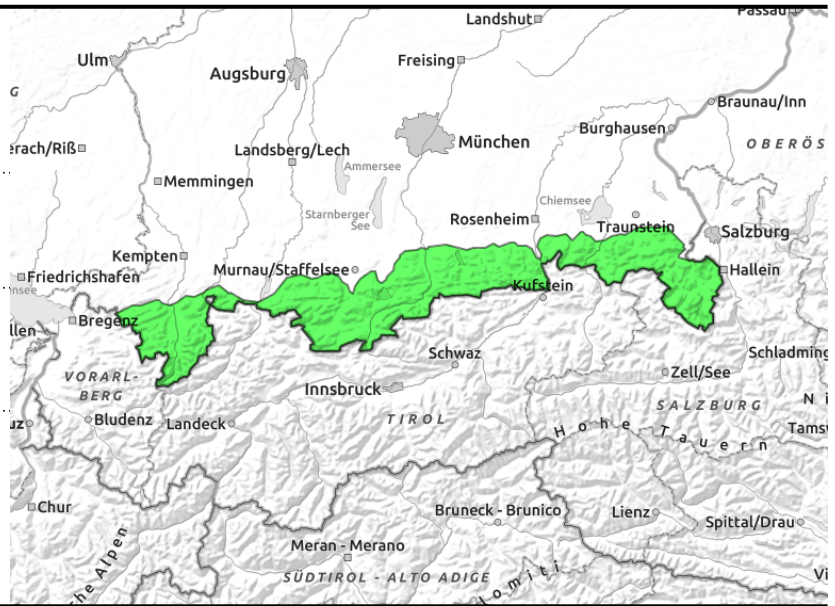
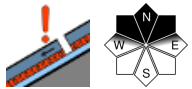
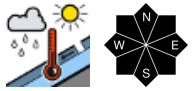


Expositions



15.01.2022

Allgäuer Vorberge, Allgäuer Hauptkamm, Ammergauer Alpen, Bayerische Voralpen West, Werdenfeller Alpen, Bayerische Voralpen Mitte, Bayerische Voralpen Ost, Chiemgauer Alpen West, Chiemgauer Alpen Ost, Berchtesgadener Alpen



Beware of wet snow avalanches in steep rocky terrain; isolated avalanche prone locations in old snowdrifts at high altitudes

Avalanche danger is generally low. Main problem: wet snow. As a consequence of solar radiation, it is possible that small loose snow avalanches trigger naturally during the course of the day, in particular in steep rocky terrain. Even a sole skier can release small wet snow avalanches in steep terrain.

At intermediate altitudes, isolated glide snow avalanches can release spontaneously on smooth grass-covered slopes which have not yet discharged. Slopes with glide cracks should be avoided.

Avalanches attain medium size.

At high altitude older snowdrifts are now in particular triggerable by large additional loading. Isolated avalanche prone locations are found in shady extremely steep terrain as well as in gullies filled with wind-transported snow. Slab avalanches that are triggered can grow to medium size.

Snowpack structure

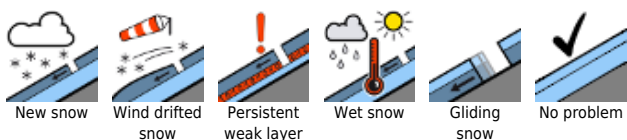
Following a night with clear skies, the snowpack surface is covered by a breakable melt-freeze crust on sunny slopes in the morning. On shady slopes the snow is still powdery. During the course of the day, mild temperatures and solar radiation soften the snowpack surface increasingly again. This is associated with a loss in firmness. The old snowpack is wind-impacted, generally compact, and stable. Up to intermediate altitudes the snowpack is often slightly moist where bordering the ground which promotes gliding of the snow masses. Isolated older snowdrifts remain at high altitudes; weak interim layers embedded in them are still prone to triggering.

Outlook

Continuing calm high pressure weather is forecast. The avalanche danger will not change significantly over the next few days.

Translated by Jeffrey McCabe, www.creativtrans.com

Avalanche problems



Danger ratings



Expositions

