

## Avoid fresh snowdrifts

	<p>1400 m Bayerische Voralpen West, Bayerische Voralpen Mitte, Bayerische Voralpen Ost, Chiemgauer Alpen West, Chiemgauer Alpen Ost, Ammergauer Alpen</p>	
	<p>1400 m Allgäuer Vorberge, Allgäuer Hauptkamm</p>	
	<p>forestline Berchtesgadener Alpen, Werdenfelser Alpen</p>	

### Avalanche problems



### Danger ratings

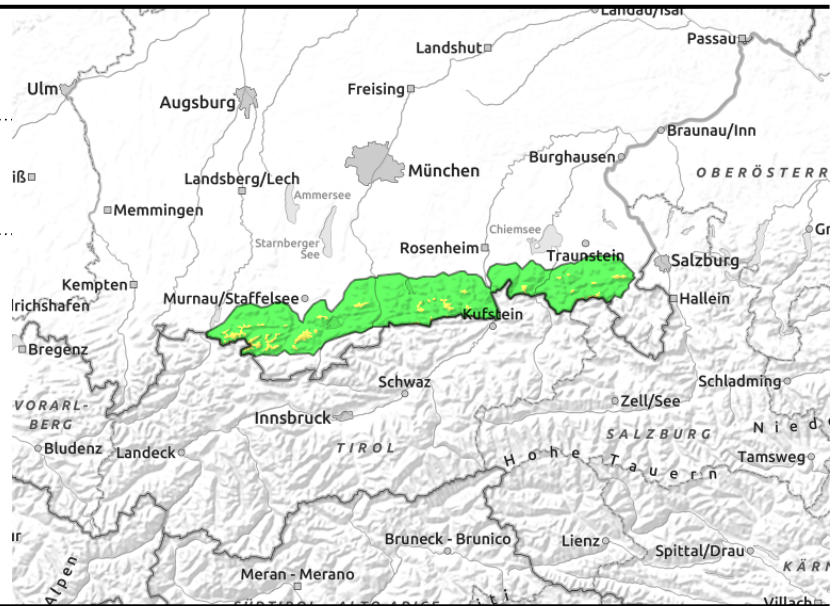
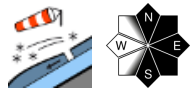


### Expositions



# 09.01.2022

**Bayerische Voralpen West, Bayerische Voralpen Mitte, Bayerische Voralpen Ost, Chiemgauer Alpen West, Chiemgauer Alpen Ost, Ammergauer Alpen**



## Snowdrift accumulations prone to triggering. Risk of falling on icy snowpack surface.

Avalanche danger above 1400 m is moderate, below that altitude danger is low. Fresh snowdrifts are the main problem. Slab avalanches of small-to-medium size can be triggered even by minimum additional loading in places, i.e. from one sole skier. Avalanche prone locations are found above the treeline in steep ridgeline terrain in N/E/S aspects, in freshly wind-loaded gullies and bowls and behind/below protruberances.

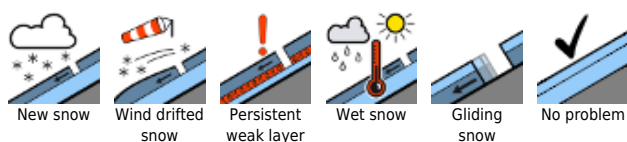
### Snowpack structure

On Saturday night and during the daytime on Sunday, repeated bouts of snowfall are expected, accompanied by occasionally stormy westerly winds. These will generate fresh small snowdrift accumulations anew which will be deposited on top of older snowdrifts or loose snowpack layers and be prone to triggering. At high altitudes the snowpack fundament is melt-freeze encrusted and stable. Crests and ridges are windblown. At low altitudes and on sunny slopes, powder snow covers the ground.

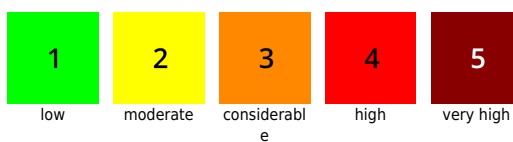
### Outlook

Quiet winter weather. Avalanche danger will gradually diminish over the next few days.

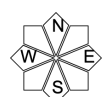
#### Avalanche problems



#### Danger ratings

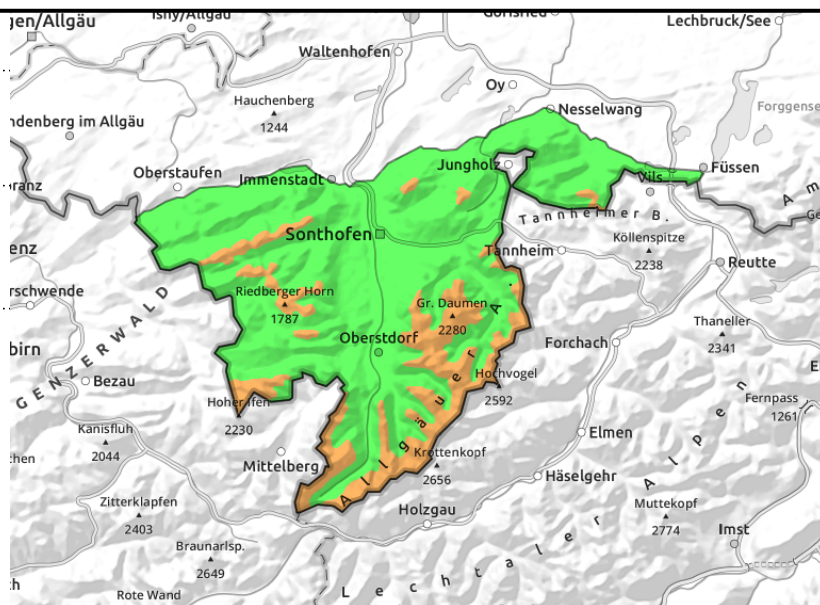
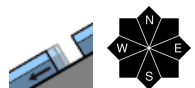
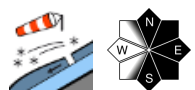
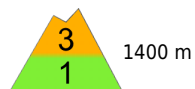


#### Expositions



# 09.01.2022

## Allgäuer Vorberge, Allgäuer Hauptkamm



### Fresh snowdrifts very prone to triggering at high altitudes

Avalanche danger above 1400 m is moderate, below that altitude danger is low. Fresh snowdrifts are the main problem. Slab avalanches of small-to-medium size can be triggered even by minimum additional loading in places, i.e. from one sole skier. Avalanche prone locations are found above the treeline in steep ridgeline terrain in N/E/S aspects, in freshly wind-loaded gullies and bowls and behind/below protruberances. With ascending altitude the avalanche prone locations increase: easier to trigger and potentially larger.

On steep grass-covered slopes, isolated small-to-medium glide snow avalanches can release all by themselves.

### Snowpack structure

On Saturday night and during the daytime on Sunday, repeated bouts of snowfall are expected, accompanied by occasionally stormy westerly winds. These will generate fresh small snowdrift accumulations anew which will be deposited on top of older snowdrifts or loose snowpack layers and be prone to triggering. At high altitudes the snowpack fundament is melt-freeze encrusted and stable. Crests and ridges are windblown. At low altitudes and on sunny slopes, powder snow covers the ground.

### Outlook

Quiet winter weather. Avalanche danger will gradually diminish over the next few days.

#### Avalanche problems



#### Danger ratings

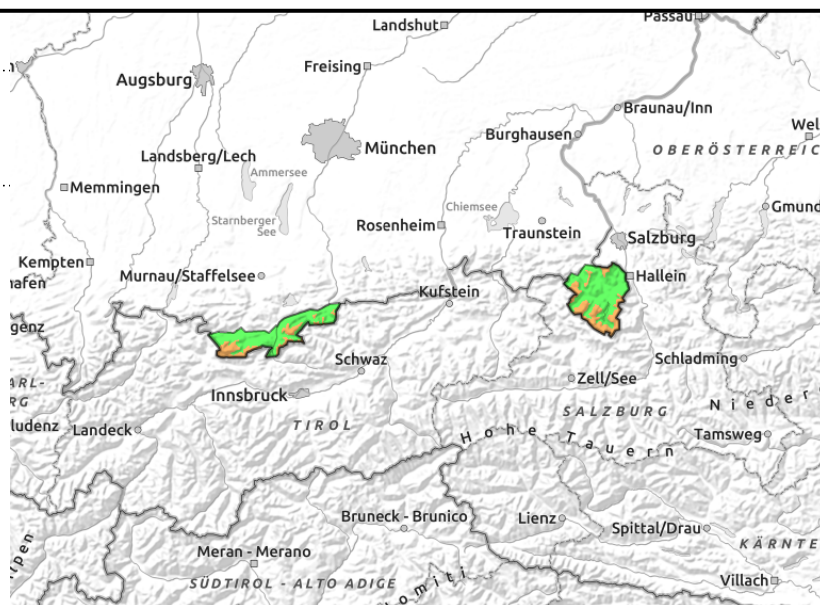
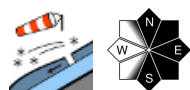


#### Expositions



**09.01.2022**

**Berchtesgadener Alpen, Werdenfelser Alpen**



**Fresh snowdrifts very prone to triggering at high altitude**

Avalanche danger above the treeline will increase from moderate to considerable during the day. Fresh snowdrifts are the main problem. Slab avalanches of small-to-medium size can be triggered even by minimum additional loading in places, i.e. from one sole skier. Avalanche prone locations are found above the treeline in steep ridgeline terrain in N/E/S aspects, in freshly wind-loaded gullies and bowls and behind/below protruberances. With ascending altitude, danger zones tend to increase and thus, avalanches can be larger.

**Snowpack structure**

On Saturday night and during the daytime on Sunday, repeated bouts of snowfall are expected, accompanied by occasionally stormy westerly winds. These will generate fresh small snowdrift accumulations anew which will be deposited on top of older snowdrifts or loose snowpack layers and be prone to triggering. At high altitudes the snowpack fundament is melt-freeze encrusted and stable. Crests and ridges are windblown. At low altitudes and on sunny slopes, powder snow covers the ground.

**Outlook**

Quiet winter weather. Avalanche danger will gradually diminish over the next few days.

Translated by Jeffrey McCabe, [www.creativtrans.com](http://www.creativtrans.com)

**Avalanche problems**



**Danger ratings**



**Expositions**

