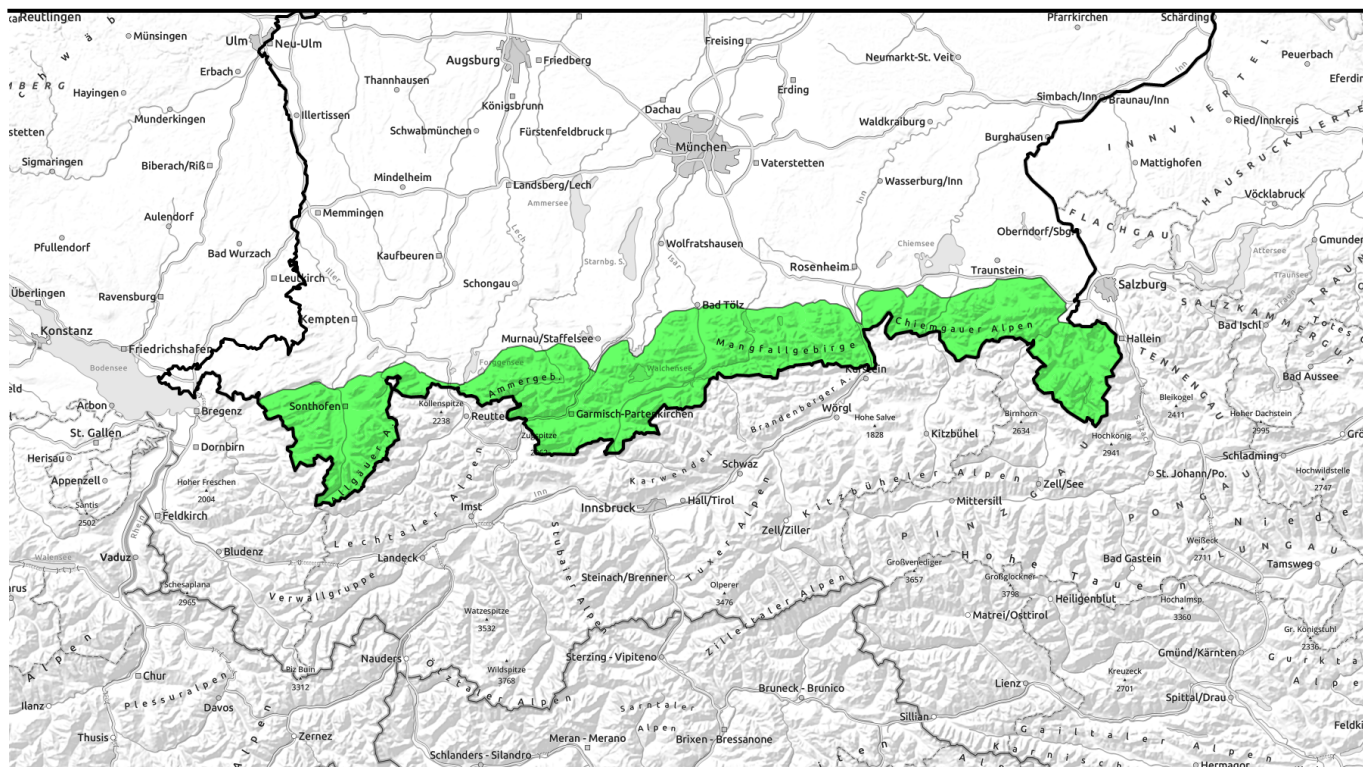


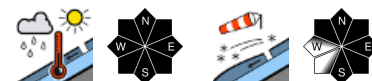
04.01.2022



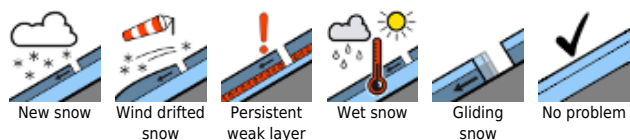
Little snow at intermediate altitudes, hardened surfaces at high altitudes



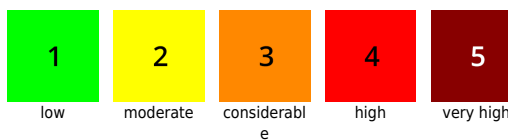
Allgäuer Vorberge, Ammergauer Alpen, Bayerische Voralpen West, Bayerische Voralpen Ost, Chiemgauer Alpen West, Chiemgauer Alpen Ost, Werdenfeller Alpen, Bayerische Voralpen Mitte, Allgäuer Hauptkamm, Berchtesgadener Alpen



Avalanche problems



Danger ratings

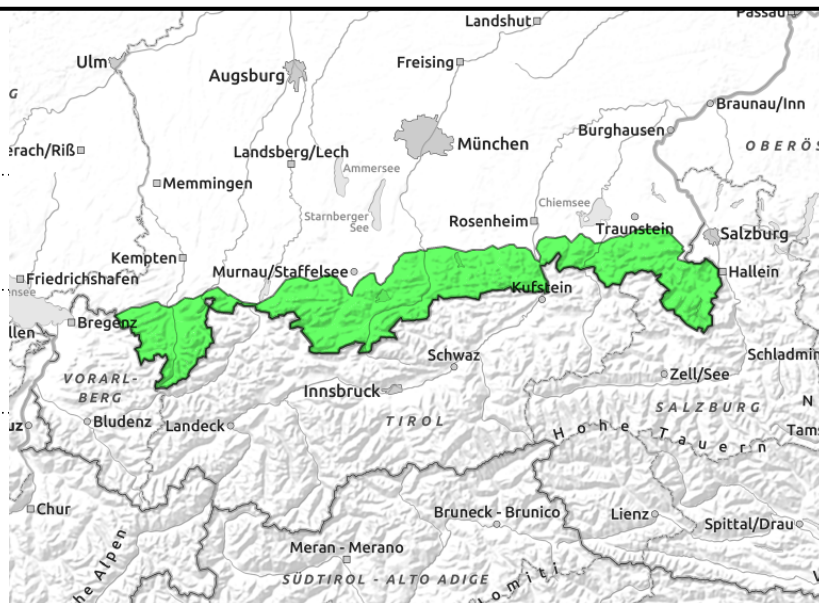
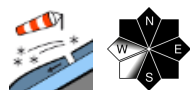
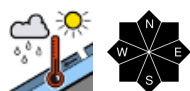


Expositions



04.01.2022

Allgäuer Vorberge, Ammergauer Alpen, Bayerische Voralpen West, Bayerische Voralpen Ost, Chiemgauer Alpen West, Chiemgauer Alpen Ost, Werdenfeller Alpen, Bayerische Voralpen Mitte, Allgäuer Hauptkamm, Berchtesgadener Alpen



Risks of falling on hardened surfaces

Avalanche danger is low. Main problem: the wet snow. At intermediate altitudes, glide-snow avalanches can unleash naturally at any time of day or night in forest clearances or on smooth grass-covered slopes which have not yet discharged. Most are small, medium-sized releases possible in the Allgäu. In extremely steep terrain, naturally triggered, generally small-sized, wet loose avalanches can be expected.

On the Main Allgäu Ridge above 2000 m, furthermore, small fresh snowdrift accumulations will be generated which can be triggered even by minimum additional loading. Danger zones are located in steep ridgeline terrain in NW/E/S aspects and in wind-loaded gullies and bowls. Risks of falling outweigh the danger of being buried in snow.

Snowpack structure

Below 1500 m there is little snow on the ground. The old snowpack has receded noticeably at intermediate altitudes, it is thoroughly wet and not capable of bearing loads. At high altitudes the snowpack is stable, the surface melt-freeze encrusted. On Monday night and during the daytime on Tuesday in the Allgäu, strong winds, a bit of precipitation above 2000 m, small trigger-sensitive snowdrift accumulations will be generated.

Outlook

As the temperatures soon drop, new snow and strong winds will dominate the situation on Wednesday.

Translated by Jeffrey McCabe, www.creativtrans.com

Avalanche problems



Danger ratings



Expositions

