

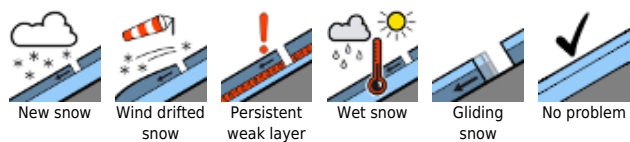
## Caution: danger of falling on encrusted snowpack surfaces



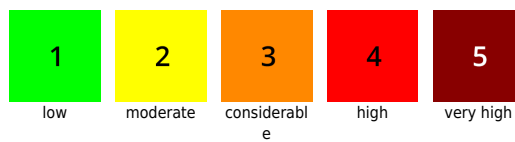
Allgäuer Hauptkamm, Werdenfeller Alpen, Allgäu Vorberge, Ammergauer Alpen, Bayerische Voralpen West, Bayerische Voralpen Mitte, Bayerische Voralpen Ost, Chiemgauer Alpen West, Chiemgauer Alpen Ost, Berchtesgadener Alpen



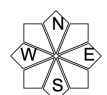
### Avalanche problems



### Danger ratings



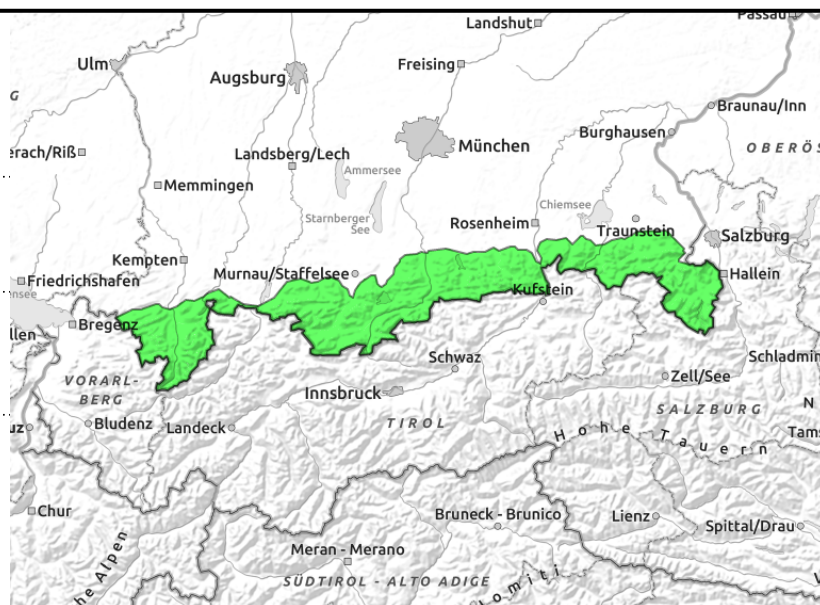
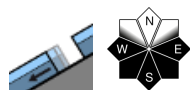
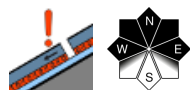
### Expositions





**21.12.2021**

**Allgäuer Hauptkamm, Werdenfeller Alpen, Allgäuer Vorberge, Ammergauer Alpen, Bayerische Voralpen West, Bayerische Voralpen Mitte, Bayerische Voralpen Ost, Chiemgauer Alpen West, Chiemgauer Alpen Ost, Berchtesgadener Alpen**



**Caution: fresh ridgeline snowdrifts (small), danger of falling on icy surfaces outweighs avalanche perils**

Low avalanche danger prevails in the Bavarian Alps. Avalanche prone intermediate layers in the old snow are the main problem. Slab avalanches of medium size can be triggered in extremely steep terrain by large additional loading in isolated cases. This applies particularly to shady slopes above 2300 m in places where snow is shallow, e.g. at entries to gullies and bowls. In addition, at intermediate altitude isolated glide-snow avalanches trigger on smooth, steep grass-covered slopes. These releases are mostly small, but in the Allgäu can reach medium size. Shallow, fresh snowdrift accumulations in ridgeline terrain can easily be triggered and force a fall.

**Snowpack structure**

The snowpack has settled well in the mild temperatures, is compact by and large, and stable. The easterly winds will lead to small snowdrift accumulations forming at summit altitudes, deposited on the crusts (melt-freeze or wind-generated) of varying thickness and in wind-protected shady terrain atop surface hoar. Snow layers deposited atop expansively metamorphosed (faceted) crystals are located at high altitudes at ground level. On shady slopes these layers are more pronounced, fracture propagation is likelier. At low and intermediate altitudes the snowpack is moist down to the ground. Gliding movements cannot be ruled out but are becoming more seldom.

**Outlook**

No significant change in avalanche danger is expected in the next few days.

Translated by Jeffrey McCabe, [www.creativtrans.com](http://www.creativtrans.com)

**Avalanche problems**



**Danger ratings**



**Expositions**

