

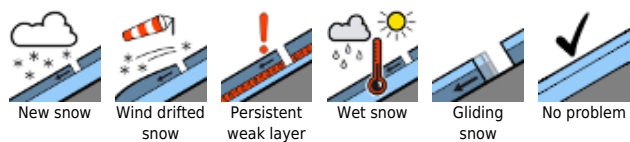
Caution: danger of falling on icy old snowpack surfaces



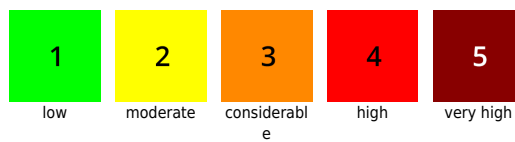
Allgäuer Hauptkamm, Werdenfeller Alpen, Allgäu Vorberge, Ammergauer Alpen, Bayerische Voralpen West, Bayerische Voralpen Mitte, Bayerische Voralpen Ost, Chiemgauer Alpen West, Chiemgauer Alpen Ost, Berchtesgadener Alpen



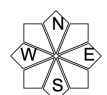
Avalanche problems



Danger ratings

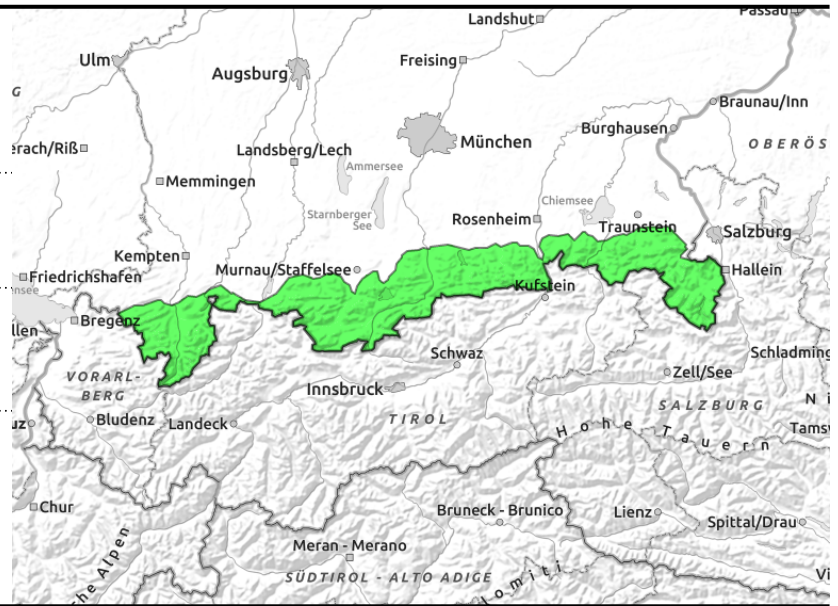
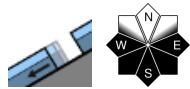
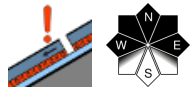


Expositions



20.12.2021

Allgäuer Hauptkamm, Werdenfeller Alpen, Allgäuer Vorberge, Ammergauer Alpen, Bayerische Voralpen West, Bayerische Voralpen Mitte, Bayerische Voralpen Ost, Chiemgauer Alpen West, Chiemgauer Alpen Ost, Berchtesgadener Alpen



Peril of taking a fall outweighs that of being buried in snow

Low avalanche danger prevails in the Bavarian Alps. Avalanche prone intermediate layers in the old snow are the main problem. Slab avalanches of medium size can be triggered in extremely steep terrain by large additional loading in isolated cases. This applies particularly to shady slopes above 2300 m in places where snow is shallow, e.g. at entries to gullies and bowls.

In addition, at intermediate altitude isolated glide-snow avalanches trigger on smooth, steep grass-covered slopes. These releases are mostly small, but in the Allgäu can reach medium size.

Shallow, fresh snowdrift accumulations in ridgeline terrain can easily be triggered and force a fall.

Snowpack structure

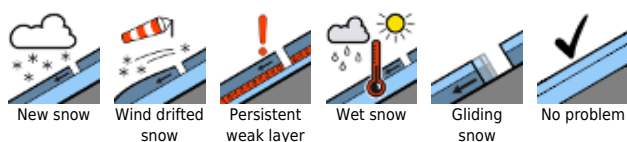
The snowpack has settled well in the mild temperatures, is compact by and large, and stable. The NW winds and minor snowfall in eastern regions will lead to small snowdrift accumulations forming at summit altitudes, deposited on the crusts (melt-freeze or wind-generated) of varying thickness and in wind-protected shady terrain atop surface hoar. Snow layers deposited atop expansively metamorphosed (faceted) crystals are located at high altitudes at ground level. On shady slopes these layers are more pronounced, fracture propagation is likelier. At low and intermediate altitudes the snowpack is moist down to the ground. Gliding movements cannot be ruled out but are becoming more seldom.

Outlook

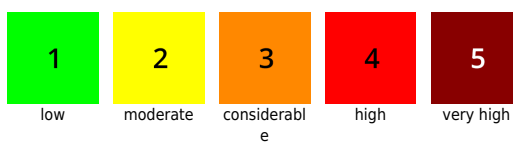
No significantly change in avalanche danger is expected in the next few days.

Translated by Jeffrey McCabe, www.creativtrans.com

Avalanche problems



Danger ratings



Expositions

