

**Old snowdrifts at higher altitudes still triggerable.
Possibility of glide snow avalanches at intermediate altitudes.**

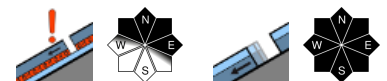


Allgäuer Vorberge, Allgäuer Hauptkamm

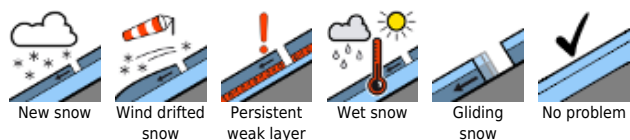


1800 m

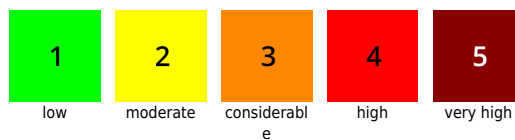
Ammergauer Alpen, Werdenfeller Alpen, Bayerische Voralpen West, Bayerische Voralpen Mitte, Bayerische Voralpen Ost, Chiemgauer Alpen West, Chiemgauer Alpen Ost, Berchtesgadener Alpen



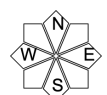
Avalanche problems



Danger ratings

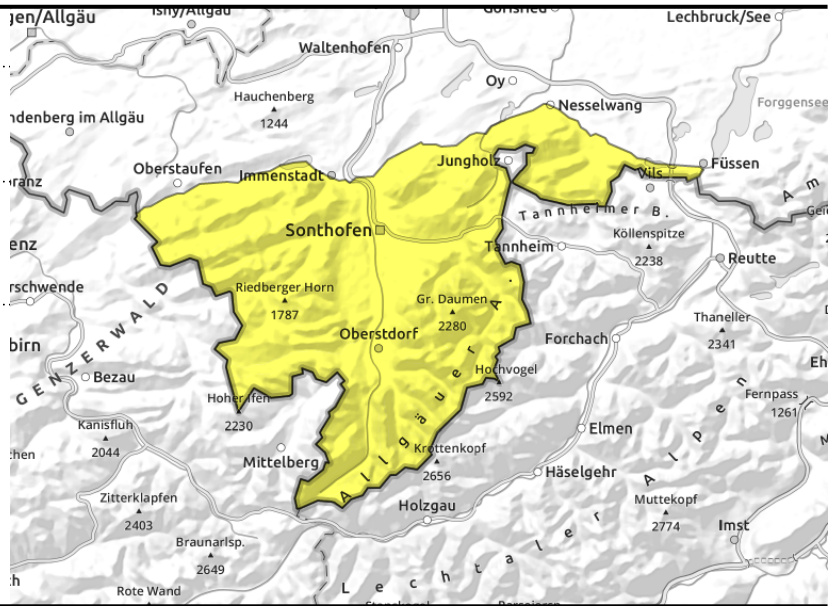
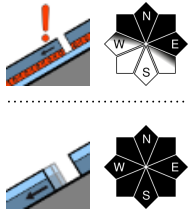


Expositions



17.12.2021

Allgäuer Vorberge, Allgäuer Hauptkamm



Old snowdrifts at higher altitudes still triggerable. Possibility of glide snow avalanches at intermediate altitudes.

At higher altitudes the main problem stems from trigger-sensitive intermediate layers in the old snowpack. Indeed, these will now only be released by large additional loading, but the resulting slab avalanches can grow to medium size. Danger prone locations are mainly found in steep terrain in northwest to north to east aspects as well as in wind-loaded gullies. Additional trigger-sensitive locations are found at transitions from deep to shallow snow where weak layers in the snowpack close to the ground can be triggered. These can even release as large slab avalanches.

At intermediate altitudes it is still possible that small to medium-sized glide snow avalanches release naturally on steep, smooth grass-covered slopes. Avoid areas below glide cracks! During the course of the day, wet loose snow and slab avalanches can trigger naturally on sunny, steep rocky slopes.

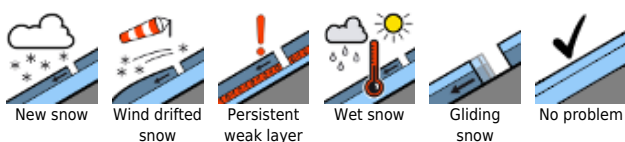
Snowpack structure

In general, the snowpack has settled and consolidated well over the last few days. Up to high altitudes the melt-freeze crust at the snowpack surface is now mostly capable of bearing loads. At higher altitudes old snowdrifts are still prone to triggering; but they are bonding more and more. There are still isolated trigger-prone intermediate layers consisting of expansively metamorphosed (faceted) crystals at the snowpack base. At lower and intermediate altitudes the snowpack is moist but compact. A snowpack base that is moist to wet enhances gliding movements of the snow masses.

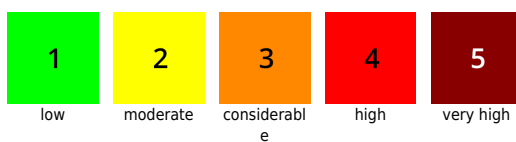
Outlook

No significant change in avalanche danger levels is anticipated in the next few days.

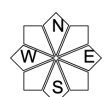
Avalanche problems



Danger ratings

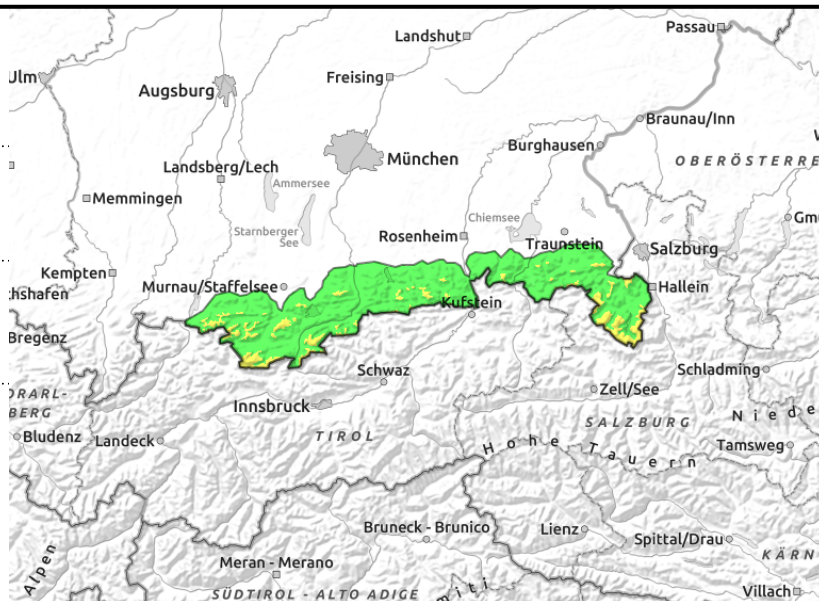
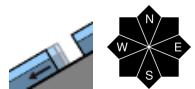
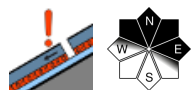


Expositions



17.12.2021

Ammergauer Alpen, Werdenfelser Alpen, Bayerische Voralpen West, Bayerische Voralpen Mitte, Bayerische Voralpen Ost, Chiemgauer Alpen West, Chiemgauer Alpen Ost, Berchtesgadener Alpen



Old snowdrifts at higher altitudes still triggerable.

At higher altitudes the main problem stems from trigger-sensitive intermediate layers in the old snowpack. These are only triggerable by large additional loading, but the resulting slab avalanches can grow to medium size. Danger prone locations are mainly found in steep terrain in northwest to north to east aspects as well as in wind-loaded gullies. Additional trigger-sensitive locations are found at transitions from deep to shallow snow where weak layers in the snowpack close to the ground can be triggered. These can even release as large slab avalanches.

At intermediate altitudes it is still possible that small to medium-sized glide snow avalanches release naturally on steep, smooth grass-covered slopes. Avoid areas below glide cracks! During the course of the day, wet loose snow and slab avalanches can trigger naturally on sunny, steep rocky slopes.

Snowpack structure

In general, the snowpack has settled and consolidated well over the last few days. Up to high altitudes the melt-freeze crust at the snowpack surface is now mostly capable of bearing loads. At higher altitudes old snowdrifts are still prone to triggering; but they are bonding more and more. There are still isolated trigger-prone intermediate layers consisting of expansively metamorphosed (faceted) crystals at the snowpack base. At lower and intermediate altitudes the snowpack is moist but compact. A snowpack base that is moist to wet enhances gliding movements of the snow masses.

Outlook

No significant change in avalanche danger levels is anticipated in the next few days.

Translated by Jeffrey McCabe, www.creativtrans.com

Avalanche problems



Danger ratings



Expositions

