

## Snowdrifts still prone to triggering, particularly above timberline



forestline

Allgäuer Vorberge, Ammergauer Alpen, Bayerische Voralpen West, Bayerische Voralpen Mitte, Bayerische Voralpen Ost, Chiemgauer Alpen West, Chiemgauer Alpen Ost, Allgäuer Hauptkamm, Werdenfelder Alpen, Berchtesgadener Alpen



### Avalanche problems



New snow



Wind drifted snow



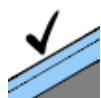
Persistent weak layer



Wet snow



Gliding snow



No problem

### Danger ratings



1

low



2

moderate



3

considerable



4

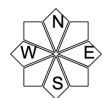
high



5

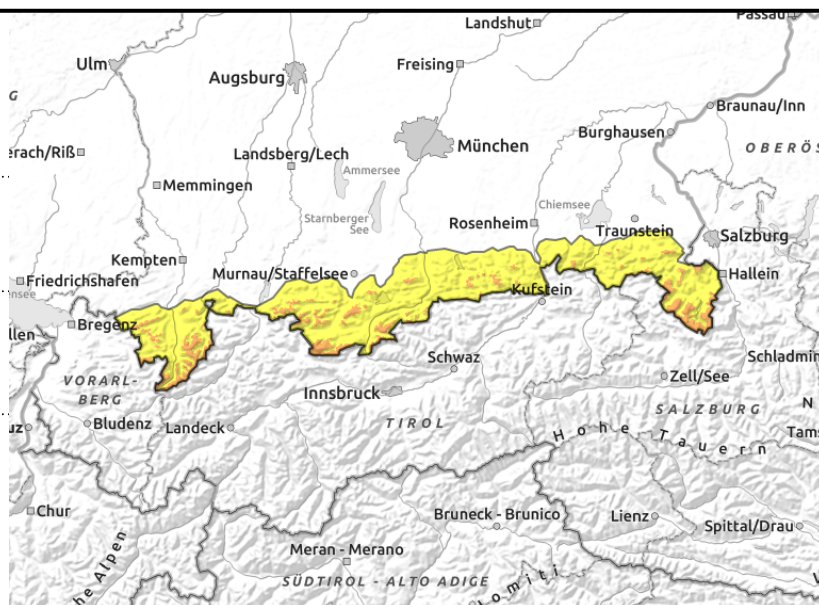
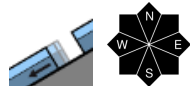
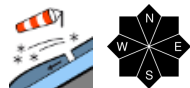
very high

### Expositions



**12.12.2021**

**Allgäuer Vorberge, Ammergauer Alpen, Bayerische Voralpen West, Bayerische Voralpen Mitte, Bayerische Voralpen Ost, Chiemgauer Alpen West, Chiemgauer Alpen Ost, Allgäuer Hauptkamm, Werdenfelser Alpen, Berchtesgadener Alpen**



## Trigger-sensitive snowdrifts persist above the treeline more than anywhere else.

The main problem: snowdrifts. In many places slab avalanches can be triggered even by minimum additional loading, for example from the weight of one sole skier. Avalanche prone locations are found in all aspects and at all altitudes, most of them above the timberline. They tend to increase with ascending altitude. The snowdrift accumulations are blanketed by fresh fallen snow, making them difficult to recognize. In isolated cases slab avalanches can trigger naturally. In case of solar radiation, small slides can unleash in steep rocky terrain which, in turn, trigger slab avalanches further down the slope. Avalanches are generally small-to-medium size. In the Allgäu and at high altitudes of the Wetterstein and Karwendel Massifs, isolated avalanches can grow to large size, in case more deeply embedded layers are also triggered.

In addition, on steep grassy-covered slopes in forest clearances, small-to-medium glide-snow avalanches are possible. Glide cracks are alarm signals.

### Snowpack structure

Winds - sometimes strong and gusty - continue to form fresh snowdrift accumulations. Inside the snowdrifts of the last 24 hours there are trigger-sensitive intermediate layers embedded. Also the bonding to the old snowpack surface from Friday is still inadequate. Due to higher temperatures, settling impulses can be expected which can lead to naturally triggered avalanches. Inside the old snow masses near melt-freeze crusts there are faceted crystals at intermediate altitudes which can be triggered above 1800 m. Above 2000 m, there are expansively metamorphosed crystals in the ground level layers. On grass-covered slopes and in forested zones the snowpack at ground level is frequently moist.

### Outlook

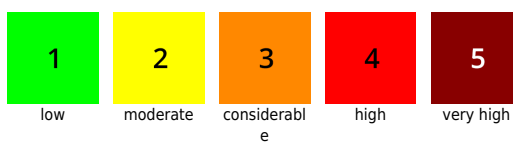
On Sunday night, rainfall will set in and extend up to intermediate altitudes. Temperatures next week will be noticeably higher. At low and intermediate altitudes the problem focal point will shift to wet snow.

Translated by Jeffrey McCabe, [www.creativtrans.com](http://www.creativtrans.com)

#### Avalanche problems



#### Danger ratings



#### Expositions

