

Lots of fresh snow, esp. in Upper Allgäu. Covered snowdrifts still trigger-sensitive

	<p>forestline</p>	<p>Bayerische Voralpen Mitte, Chiemgauer Alpen West, Chiemgauer Alpen Ost, Bayerische Voralpen Ost, Bayerische Voralpen West</p>	
	<p>forestline</p>	<p>Werdenfeller Alpen, Berchtesgadener Alpen, Ammergauer Alpen</p>	
	<p>1600 m</p>	<p>Allgäuer Hauptkamm, Allgäuer Vorberge</p>	

Avalanche problems



Danger ratings

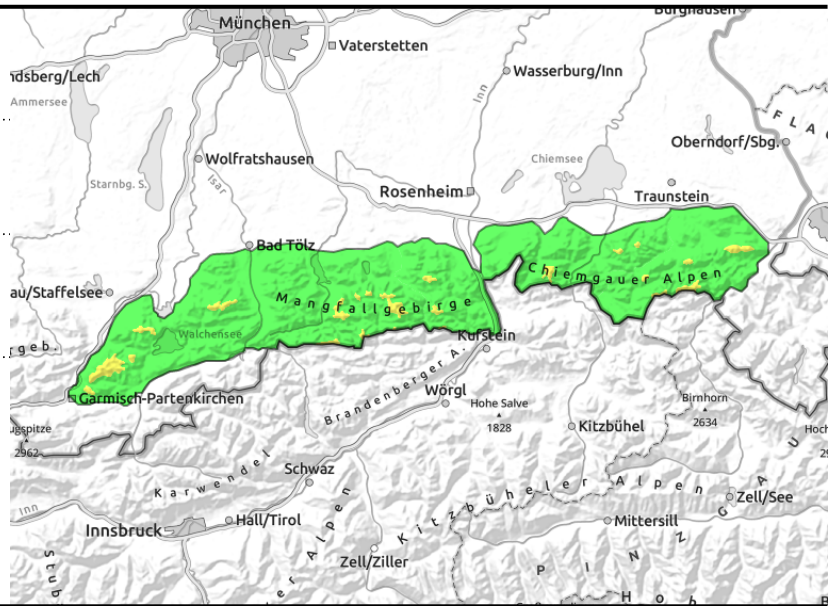
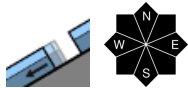
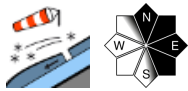


Expositions



09.12.2021

Bayerische Voralpen Mitte, Chiemgauer Alpen West, Chiemgauer Alpen Ost, Bayerische Voralpen Ost, Bayerische Voralpen West



Older snowdrifts prone to triggering, covered by fresh snow

Main problem: older snowdrifts, blanketed by fresh snow, difficult to recognize. Isolated avalanche prone locations found near ridgelines in north-to-east-to southeast aspects on steep slopes and in wind-loaded gullies and bowls. Medium-sized slab avalanches can be triggered particularly by large additional loading, e.g. by a group of skiers without maintaining distances.

Furthermore, at intermediate altitudes isolated naturally triggered glide-snow avalanches are occurring. This applies to steep grass-covered slopes in all aspects. Depending on snow depths, medium-sized avalanches cannot be ruled out.

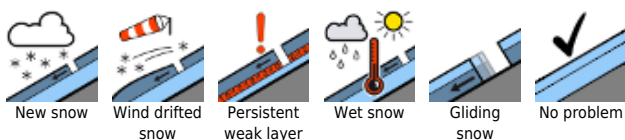
Snowpack structure

By Thursday midday, up to 20 cm of fresh snow is anticipated. Moderate-strength NW winds will transported the lightly bonded fresh snow to a thin layer on top of expansively metamorphosed (faceted) crystals on the old snowpack surface. Bonding of layers is inadequate. Older snowdrifts are blanketed, lie bonded atop loosely-packed cold layers of snow and are prone to triggering. Below the treeline the snowpack has settled well, ground-level layers are often moist which in turn furthers gliding snow movements.

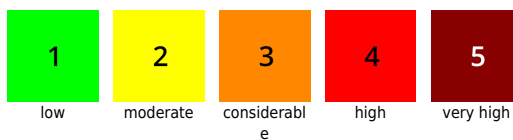
Outlook

Avalanche danger will increase on Thursday as a result of additional snowfall.

Avalanche problems



Danger ratings

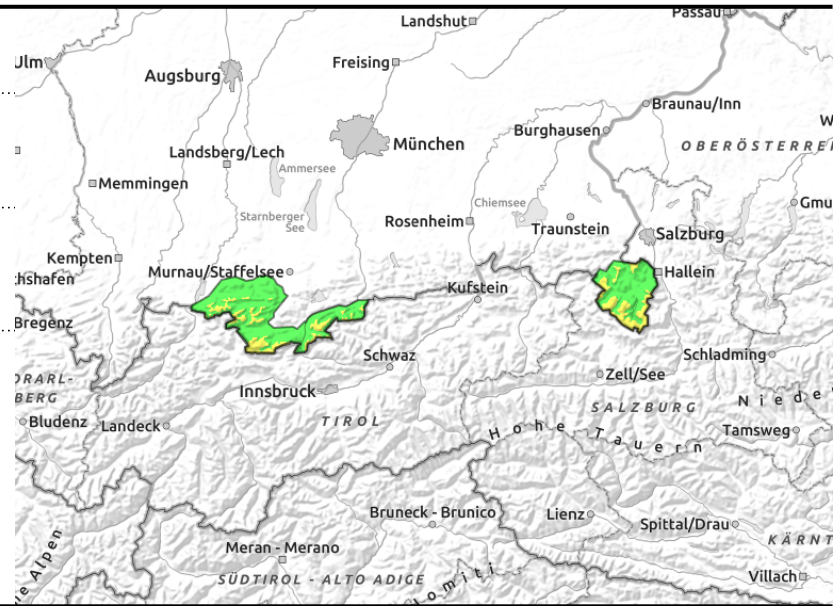
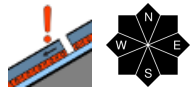
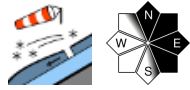


Expositions



09.12.2021

Werdenfeller Alpen, Berchtesgadener Alpen, Ammergau Alpen



Older snowdrifts prone to triggering, covered by fresh snow

Main problem: older snowdrifts, blanketed by fresh snow, difficult to recognize. Isolated avalanche prone locations found near ridgelines in north-to-east-to southeast aspects on steep slopes and in wind-loaded gullies and bowls. Medium-sized slab avalanches can be triggered particularly by large additional loading, e.g. by a group of skiers without maintaining distances. Furthermore, at intermediate altitudes isolated naturally triggered glide-snow avalanches are occurring. This applies to steep grass-covered slopes in all aspects. Depending on snow depths, medium-sized avalanches cannot be ruled out.

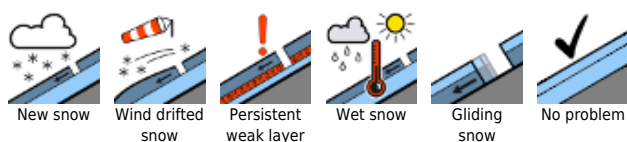
Snowpack structure

By Thursday midday, up to 20 cm of fresh snow is anticipated. Moderate-strength NW winds will transported the lightly bonded fresh snow to a thin layer on top of expansively metamorphosed (faceted) crystals on the old snowpack surface. Bonding of layers is inadequate. Older snowdrifts are blanketed, lie bonded atop loosely-packed cold layers of snow and are prone to triggering. Below the treeline the snowpack has settled well, ground-level layers are often moist which in turn furthers gliding snow movements.

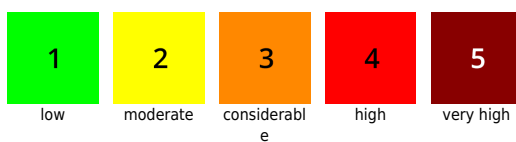
Outlook

Avalanche danger will increase on Thursday as a result of additional snowfall.

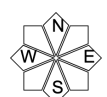
Avalanche problems



Danger ratings

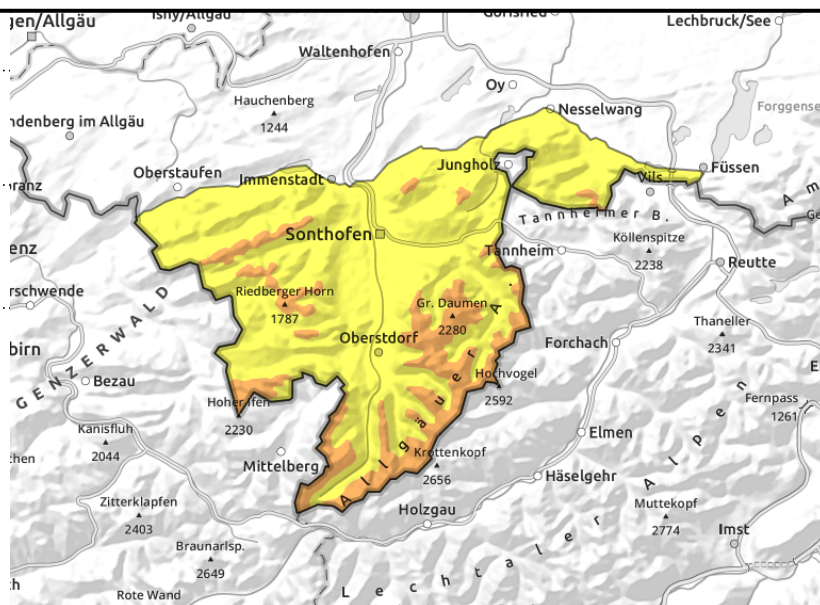
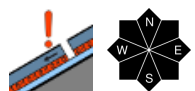
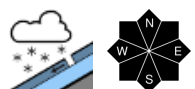


Expositions



09.12.2021

Allgäuer Hauptkamm, Allgäuer Vorberge



In high-altitude steep terrain, large loosely-packed avalanches possible

Main problem: older snowdrifts, blanketed by fresh snow, difficult to recognize. Medium-sized slab avalanches can be triggered particularly by large additional loading, e.g. by a group of skiers without maintaining distances. Danger zones are located above the timberline in ridgeline areas in N-E-SE steep terrain and in wind-loaded gullies and bowls. In addition, at high altitudes, ground level weak layers can be triggered particularly by large additional loading and in transitions from deep to shallow snow.

Furthermore, at intermediate altitudes isolated naturally triggered glide-snow avalanches are occurring. This applies to steep grass-covered slopes in all aspects. Depending on snow depths, medium-sized avalanches cannot be ruled out.

Snowpack structure

Weather

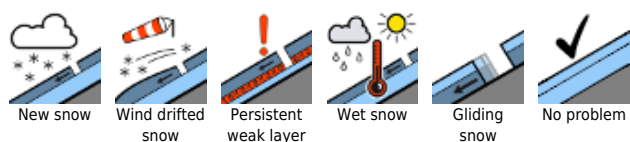
By Thursday midday, up to 20 cm of fresh snow is anticipated. Moderate-strength NW winds will transported the lightly bonded fresh snow to a thin layer on top of expansively metamorphosed (faceted) crystals on the old snowpack surface. Bonding of layers is inadequate. Older snowdrifts are blanketed, lie bonded atop loosely-packed cold layers of snow and are prone to triggering. Below the treeline the snowpack has settled well, ground-level layers are often moist which in turn furthers gliding snow movements.

Outlook

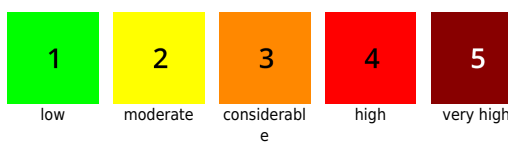
Avalanche danger will increase on Thursday as a result of additional snowfall.

Translated by Jeffrey McCabe, www.creativtrans.com

Avalanche problems



Danger ratings



Expositions

