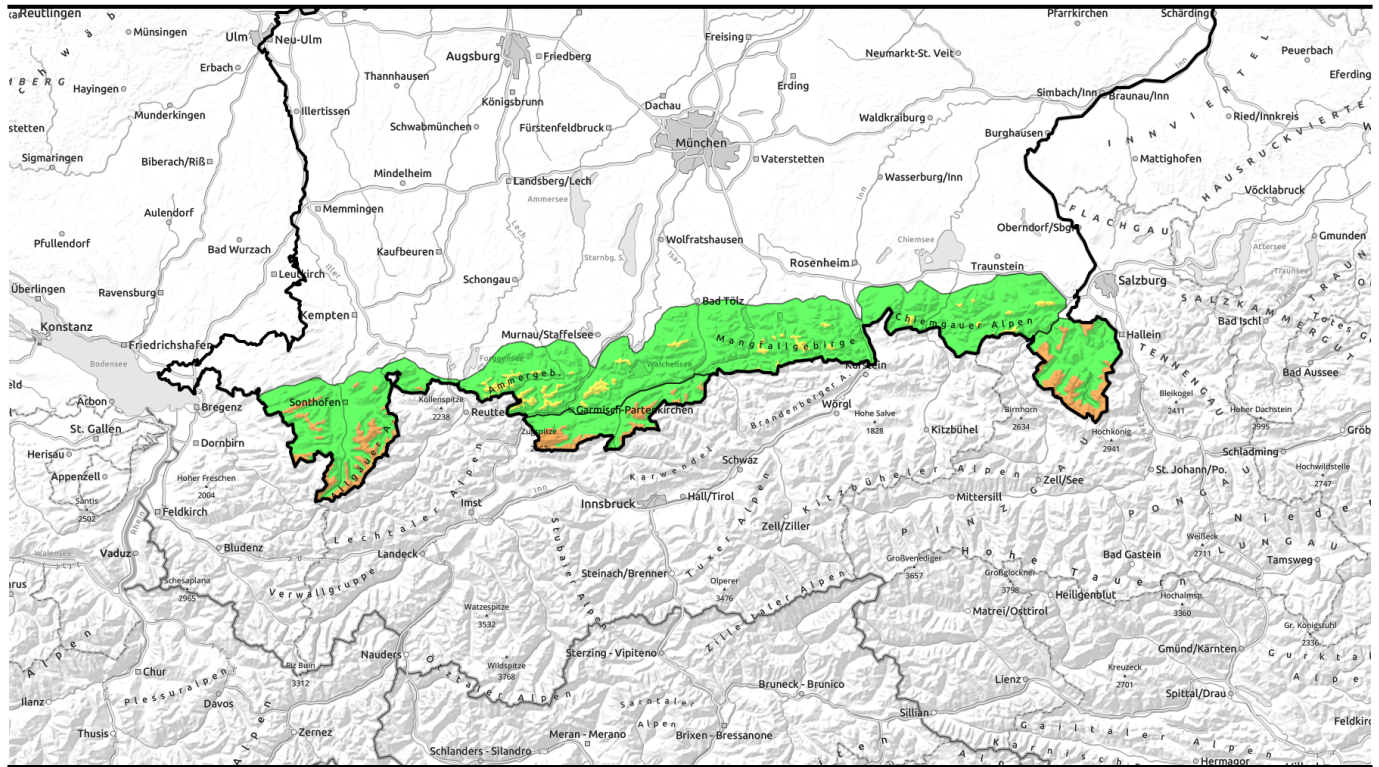


08.12.2021, morning



Trigger-sensitive snowdrift accumulations above timberline

| | | | |
|--|-------------------|--|--|
| | <p>forestline</p> | <p>Ammergauer Alpen, Bayerische Voralpen Mitte, Chiemgauer Alpen West, Chiemgauer Alpen Ost, Bayerische Voralpen Ost, Bayerische Voralpen West</p> | |
| | <p>forestline</p> | <p>Werdenfelser Alpen, Berchtesgadener Alpen</p> | |
| | <p>forestline</p> | <p>Allgäuer Hauptkamm, Allgäuer Vorberge</p> | |

Avalanche problems



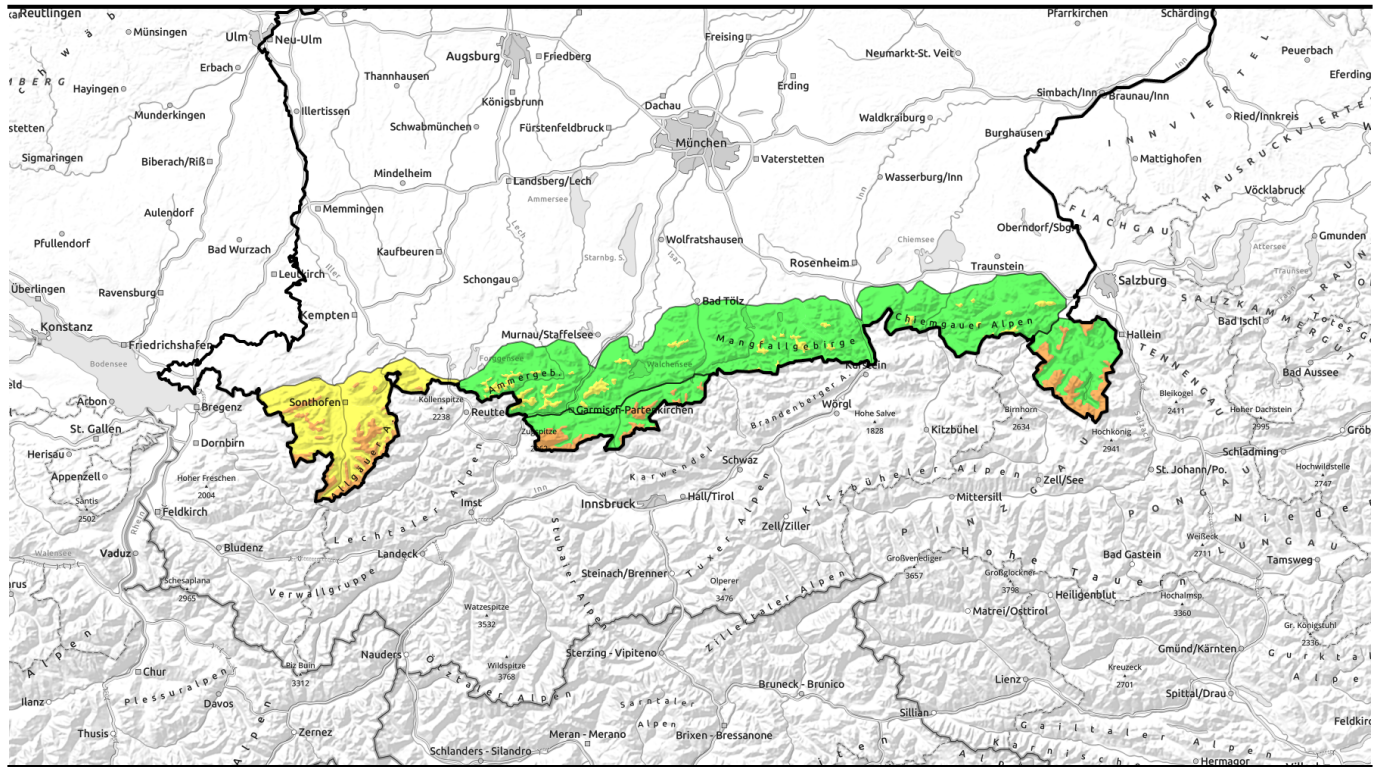
Danger ratings




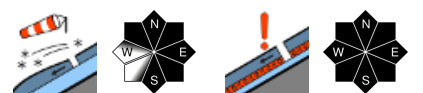



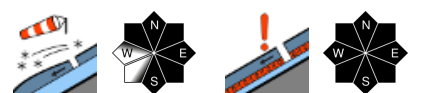
Expositions



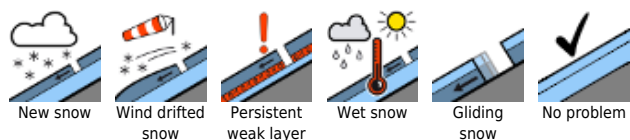
08.12.2021, afternoon



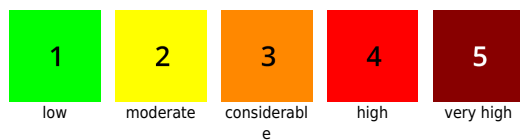
Störanfälliger Triebschnee oberhalb der Waldgrenze.

| | | |
|---|--|---|
|  | <p>Ammergauer Alpen, Bayerische Voralpen Mitte, Chiemgauer Alpen West, Chiemgauer Alpen Ost, Bayerische Voralpen Ost, Bayerische Voralpen West</p> |  |
| <p>forestline</p> | | |
|  | <p>Werdenfelser Alpen, Berchtesgadener Alpen</p> |  |
| <p>forestline</p> | | |
|  | <p>Allgäuer Hauptkamm, Allgäuer Vorberge</p> |  |
| <p>forestline</p> | | |

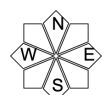
Avalanche problems



Danger ratings

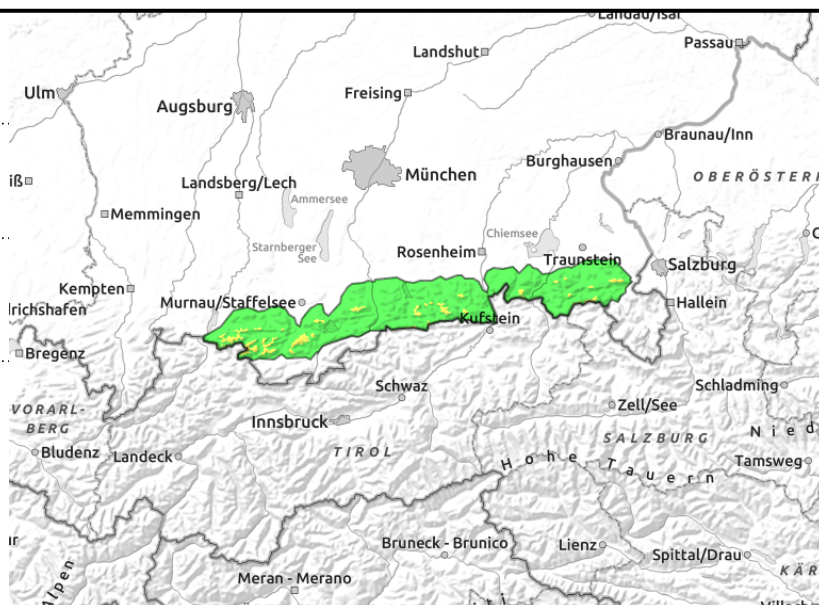
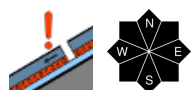
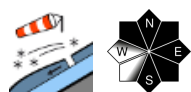


Expositions



08.12.2021

Ammergauer Alpen, Bayerische Voralpen Mitte, Chiemgauer Alpen West, Chiemgauer Alpen Ost, Bayerische Voralpen Ost, Bayerische Voralpen West



Caution: snowdrifts prone to triggering

Avalanche danger above the treeline is moderate. Snowdrift accumulations which formed over the last few days can be triggered even by minimum additional loading, i.e. the weight of one single skier, and avalanches can then grow to medium size. Avalanche prone locations are found in some ridgeline zones in NW/E/S aspects as well as in freshly wind-loaded gullies and bowls.

In addition, there are ground-level weak layers in the old snow at high altitudes, as well as in transition zones from deep to shallow snow, which can be triggered by large additional loading. Furthermore, at intermediate altitudes isolated naturally triggered glide-snow avalanches are possible on steep and smooth grass-covered slopes in all aspects. Depending on snow depths, avalanches attaining medium size cannot be ruled out.

Snowpack structure

Over the last few days, storm-strength westerly winds have generated snowdrift accumulations which were deposited on loosely-packed, cold layers of snow and are prone to triggering. Below 2000 m, thin layers of ice and several melt-freeze layers have been blanketed with fresh snow; there are often faceted snow crystals beneath these. At higher altitudes, ground-level weak layers of expansively metamorphosed (faceted) crystals persist in some places. Particularly in places where there is little snow, these layers are prone to triggering. Above the timberline the old snowpack shows marked effects of wind, below the timberline the snowpack has settled well and has a melt-freeze crust. Deeper down towards ground level, the snowpack is often moist, which furthers glide-snow movements.

Outlook

As a result of fresh snow and wind, avalanche danger will increase on Thursday.

Avalanche problems



Danger ratings

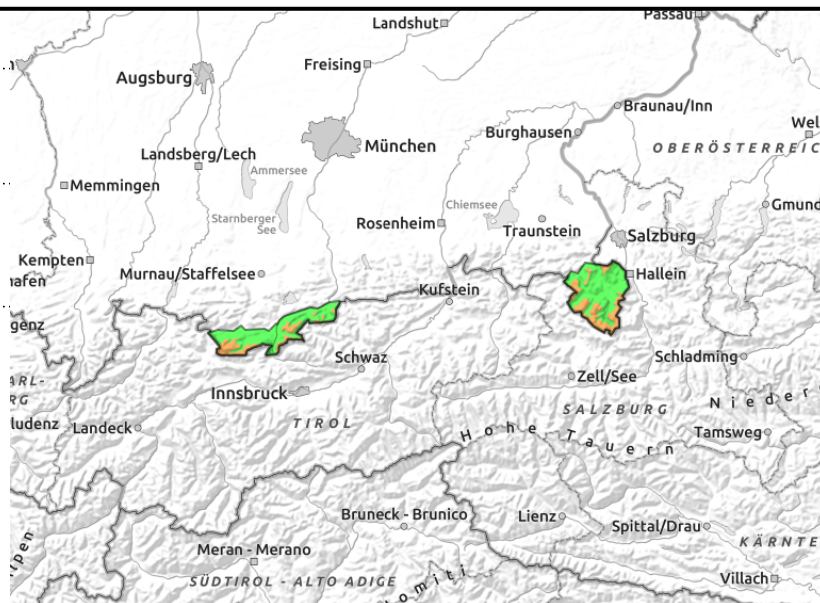
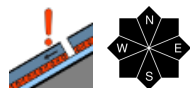
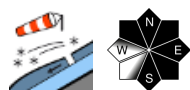


Expositions



08.12.2021

Werdenfeller Alpen, Berchtesgadener Alpen



Caution: snowdrifts at high altitude are prone to triggering. Also: heed old-snow problem.

Avalanche danger above the treeline is considerable. Snowdrift accumulations which formed over the last few days can be triggered even by minimum additional loading, i.e. the weight of one single skier, and avalanches can then grow to medium size. Avalanche prone locations are found in some ridgeline zones in NW/E/S aspects as well as in freshly wind-loaded gullies and bowls.

In addition, there are ground-level weak layers in the old snow at high altitudes, as well as in transition zones from deep to shallow snow, which can be triggered by large additional loading. Furthermore, at intermediate altitudes isolated naturally triggered glide-snow avalanches are possible on steep and smooth grass-covered slopes in all aspects. Depending on snow depths, avalanches attaining medium size cannot be ruled out.

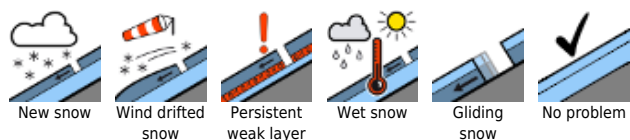
Snowpack structure

Over the last few days, storm-strength westerly winds have generated snowdrift accumulations which were deposited on loosely-packed, cold layers of snow and are prone to triggering. Below 2000 m, thin layers of ice and several melt-freeze layers have been blanketed with fresh snow; there are often faceted snow crystals beneath these. At higher altitudes, ground-level weak layers of expansively metamorphosed (faceted) crystals persist in some places. Particularly in places where there is little snow, these layers are prone to triggering. Above the timberline the old snowpack shows marked effects of wind, below the timberline the snowpack has settled well and has a melt-freeze crust. Deeper down towards ground level, the snowpack is often moist, which furthers glide-snow movements.

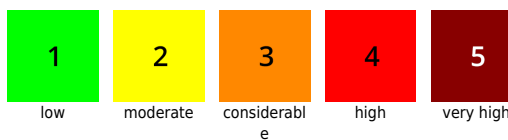
Outlook

As a result of fresh snow and wind, avalanche danger will increase on Thursday.

Avalanche problems



Danger ratings

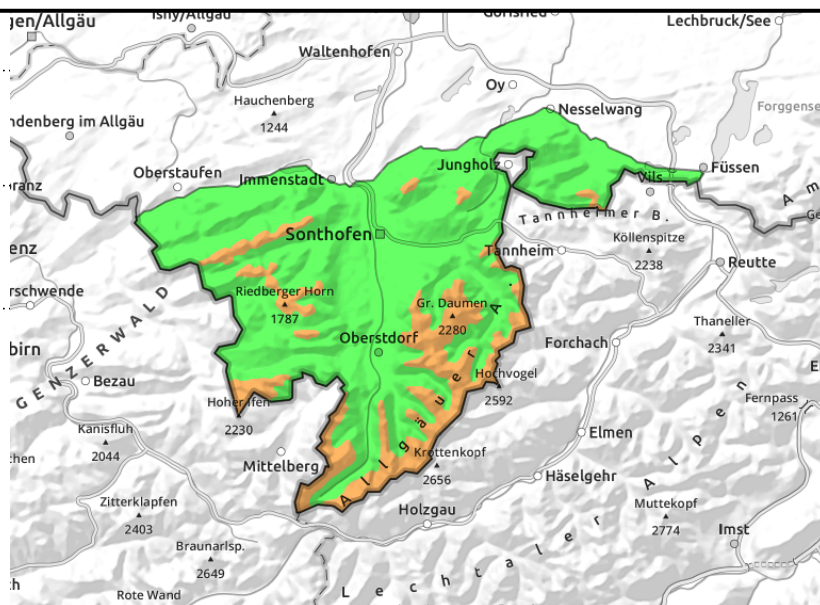
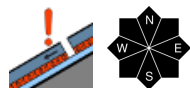
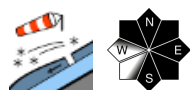


Expositions



08.12.2021, morning

Allgäuer Hauptkamm, Allgäuer Vorberge



Daytime increase in avalanche danger due to fresh snow + wind

Avalanche danger above the treeline is considerable, below the treeline danger will increase from low to moderate during the day today. Snowdrift accumulations which formed over the last few days can be triggered even by minimum additional loading, i.e. the weight of one single skier, and avalanches can then grow to medium size. Avalanche prone locations are found in some ridgeline zones in NW/E/S aspects as well as in freshly wind-loaded gullies and bowls.

In addition, there are ground-level weak layers in the old snow at high altitudes, as well as in transition zones from deep to shallow snow, which can be triggered by large additional loading. Furthermore, at intermediate altitudes isolated naturally triggered glide-snow avalanches are possible on steep and smooth grass-covered slopes in all aspects. Depending on snow depths, avalanches attaining medium size cannot be ruled out.

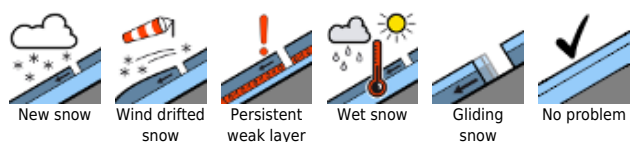
Snowpack structure

Over the last few days, storm-strength westerly winds have generated snowdrift accumulations which were deposited on loosely-packed, cold layers of snow and are prone to triggering. Below 2000 m, thin layers of ice and several melt-freeze layers have been blanketed with fresh snow; there are often faceted snow crystals beneath these. At higher altitudes, ground-level weak layers of expansively metamorphosed (faceted) crystals persist in some places. Particularly in places where there is little snow, these layers are prone to triggering. Above the timberline the old snowpack shows marked effects of wind, below the timberline the snowpack has settled well and has a melt-freeze crust. Deeper down towards ground level, the snowpack is often moist, which furthers glide-snow movements.

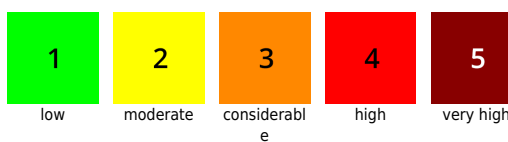
Outlook

As a result of fresh snow and wind, avalanche danger will increase on Thursday.

Avalanche problems



Danger ratings

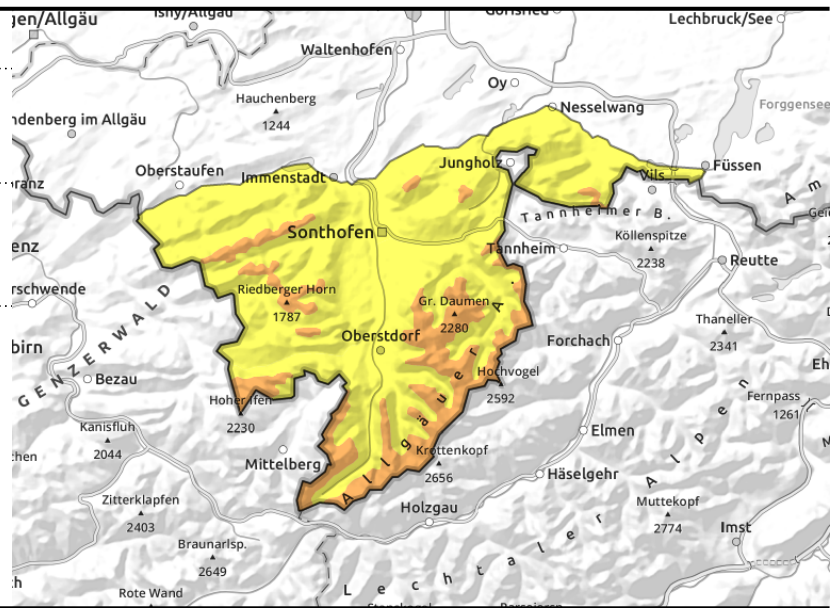
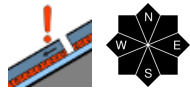
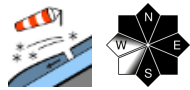


Expositions



08.12.2021, afternoon

Allgäuer Hauptkamm, Allgäuer Vorberge



Daytime increase in avalanche danger due to fresh snow + wind

Avalanche danger above the treeline is considerable, below the treeline danger will increase from low to moderate during the day today. Snowdrift accumulations which formed over the last few days can be triggered even by minimum additional loading, i.e. the weight of one single skier, and avalanches can then grow to medium size. Avalanche prone locations are found in some ridgeline zones in NW/E/S aspects as well as in freshly wind-loaded gullies and bowls.

In addition, there are ground-level weak layers in the old snow at high altitudes, as well as in transition zones from deep to shallow snow, which can be triggered by large additional loading. Furthermore, at intermediate altitudes isolated naturally triggered glide-snow avalanches are possible on steep and smooth grass-covered slopes in all aspects. Depending on snow depths, avalanches attaining medium size cannot be ruled out.

Snowpack structure

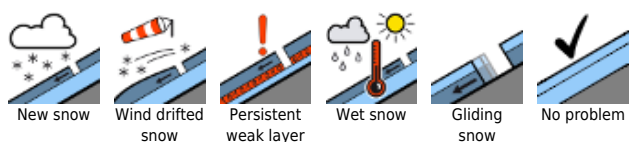
Over the last few days, storm-strength westerly winds have generated snowdrift accumulations which were deposited on loosely-packed, cold layers of snow and are prone to triggering. Below 2000 m, thin layers of ice and several melt-freeze layers have been blanketed with fresh snow; there are often faceted snow crystals beneath these. At higher altitudes, ground-level weak layers of expansively metamorphosed (faceted) crystals persist in some places. Particularly in places where there is little snow, these layers are prone to triggering. Above the timberline the old snowpack shows marked effects of wind, below the timberline the snowpack has settled well and has a melt-freeze crust. Deeper down towards ground level, the snowpack is often moist, which furthers glide-snow movements.

Outlook

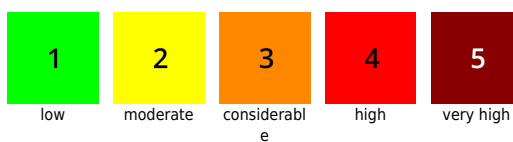
As a result of fresh snow and wind, avalanche danger will increase on Thursday.

Translated by Jeffrey McCabe, www.creativtrans.com

Avalanche problems



Danger ratings



Expositions

