

Fresh snowdrift accumulations prone to triggering above treeline!

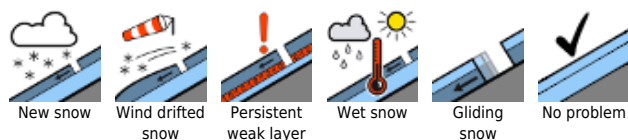


forestline

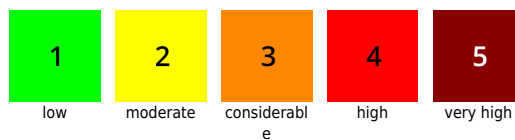
Allgäuer Hauptkamm, Ammergauer Alpen, Werdenfelser Alpen, Berchtesgadener Alpen, Allgäuer Vorberge, Bayerische Voralpen West, Bayerische Voralpen Mitte, Bayerische Voralpen Ost, Chiemgauer Alpen West, Chiemgauer Alpen Ost



Avalanche problems



Danger ratings

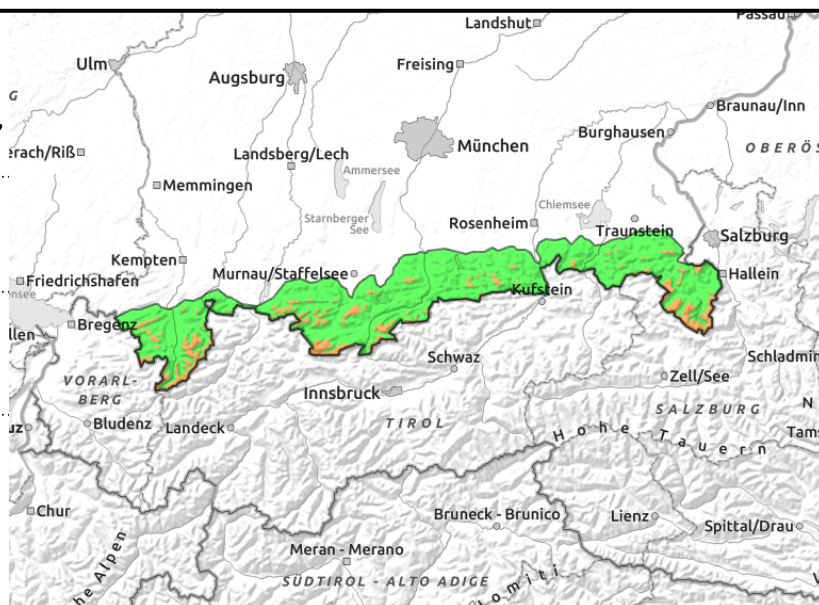
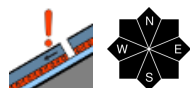
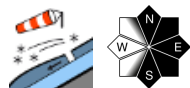


Expositions



07.12.2021

Allgäuer Hauptkamm, Ammergauer Alpen, Werdenfeller Alpen, Berchtesgadener Alpen, Allgäuer Vorberge, Bayerische Voralpen West, Bayerische Voralpen Mitte, Bayerische Voralpen Ost, Chiemgauer Alpen West, Chiemgauer Alpen Ost



Fresh trigger-sensitive snowdrift accumulations generating Tuesday morning!

Above the timberline, avalanche danger is moderate. Freshly generated drifts from Tuesday can be triggered even by minimum additional loading. Avalanche prone locations are found in ridgeline terrain in N/E/S aspects in steep terrain and in freshly wind-loaded gullies and bowls.

Apart from that, at high altitudes ground-level layers of the old snow can be triggered by large additional loading, as can transition zones from deep to shallow snow. Particularly entries into gullies and bowls, abrupt changes in the terrain, and steep rocky terrain, slab avalanches can be triggered. Avalanches can grow to large size in wind-loaded zones.

Furthermore, naturally triggered glide-snow avalanches can release in isolated cases at intermediate altitudes. This occurs on steep grass-covered slopes in all aspects. Depending on snow depths, avalanches can even reach medium size.

Snowpack structure

Since yesterday there has been average 10 cm of loosely-packed fresh snow registered which covers the old snowpack at high altitudes, that showed pronounced impact from wind. As a result of strong NW winds, the expected 10 cm of fresh snow will be transported, fresh snowdrifts will accumulate which are prone to triggering. In the vicinity of older snowdrift masses and near ground level there are layers of expansively metamorphosed (faceted) crystals. Particularly in places with little snow, these layers are prone to triggering. Below the treeline the fresh snow blankets a well settled and melt-freeze encrusted old snowpack. Towards ground level the snowpack is often moist, which furthers gliding movement of the snowpack.

Outlook

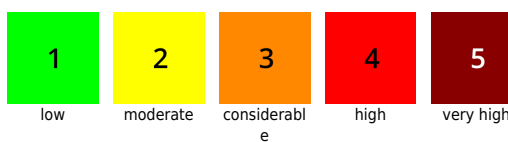
Weather will remain variable. Avalanche danger levels could increase, depending on winds and amounts of fresh snow.

Translated by Jeffrey McCabe, www.creativtrans.com

Avalanche problems



Danger ratings



Expositions

