

Trigger-sensitive fresh snowdrifts above the timberline

	<p>forestline</p>	<p>Werdenfeller Alpen, Berchtesgadener Alpen</p>	
	<p>forestline</p>	<p>Ammergauer Alpen, Bayerische Voralpen West, Bayerische Voralpen Mitte, Bayerische Voralpen Ost, Chiemgauer Alpen West, Chiemgauer Alpen Ost</p>	
	<p>forestline</p>	<p>Allgäuer Hauptkamm, Allgäuer Vorberge</p>	

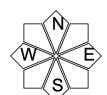
Avalanche problems



Danger ratings

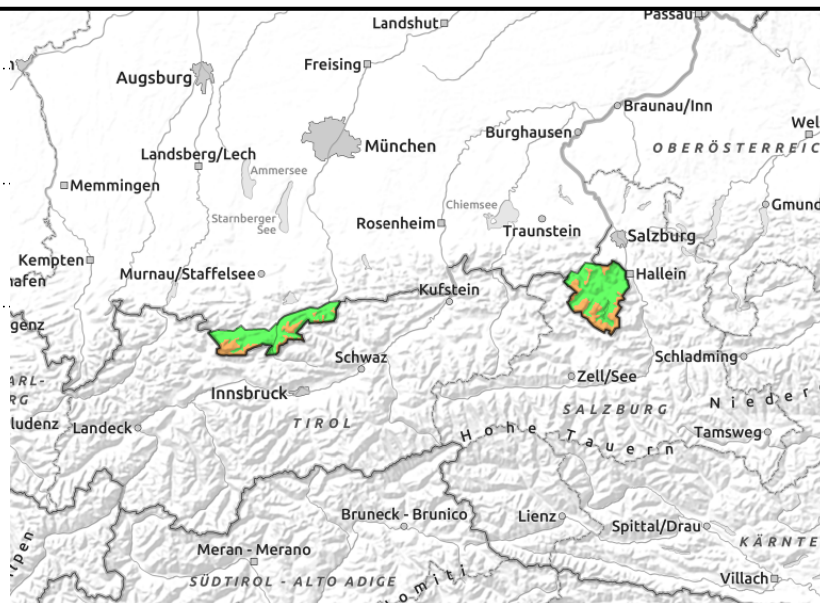
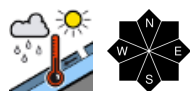
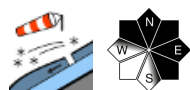


Expositions



04.12.2021

Werdenfeller Alpen, Berchtesgadener Alpen



Fresh snowdrift accumulations above the timberline are prone to triggering.

Considerable avalanche danger prevails above the treeline. Fresh drifts are the main problem. These can trigger slab avalanches even by the weight of one sole skier. Avalanche prone locations are located above the treeline in steep ridgeline terrain in NW/E/SE aspects and in wind-loaded gullies and bowls. At high altitudes avalanche releases can grow to large size when ground-level layers are also triggered. Avalanche activity in recent days demonstrates high likelihood of triggering. Furthermore, below 1500 m mostly small-sized wet loosely-packed snow and glide-snow avalanches are releasing in isolated cases, particularly in rocky steep terrain and on steep grass-covered slopes in all aspects.

Snowpack structure

Since Thursday there has been 20-30 cm of fresh snow registered widespread. Further snowfall is forecast, with rainfall at low lying areas. Intensifying winds from the west will generate fresh snowdrift accumulations above the timberline, which then will be deposited on top of loosely-packed layers of snow and thus be prone to triggering. At high altitudes, in addition, ground-level layers of snow are expansively metamorphosed (faceted). At intermediate altitudes the snowpack is wet at ground level, gliding movements are the consequence.

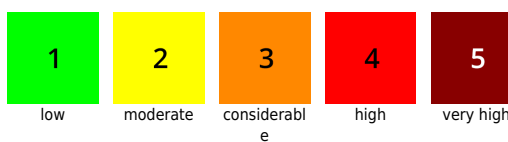
Outlook

The coming days will see more tranquil weather conditions, the snowpack will be able to settle and stabilize in the lower temperatures. Avalanche danger levels will recede gradually.

Avalanche problems



Danger ratings

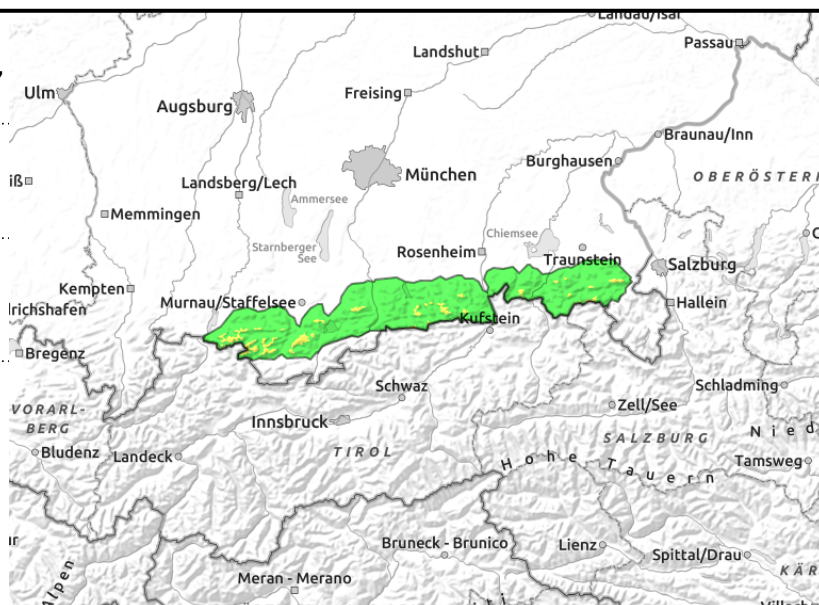
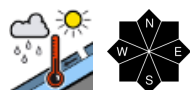
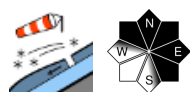


Expositions



04.12.2021

Ammergauer Alpen, Bayerische Voralpen West, Bayerische Voralpen Mitte, Bayerische Voralpen Ost, Chiemgauer Alpen West, Chiemgauer Alpen Ost



Fresh snowdrift accumulations above the timberline are prone to triggering.

Moderate avalanche danger prevails above the treeline. Fresh drifts are the main problem. These can trigger slab avalanches even by the weight of one sole skier. Avalanche prone locations are located above the treeline in steep ridgeline terrain in NW/E/SE aspects and in wind-loaded gullies and bowls. Furthermore, below 1500 m mostly small-sized wet loosely-packed snow and glide-snow avalanches are releasing in isolated cases, particularly in rocky steep terrain and on steep grass-covered slopes in all aspects.

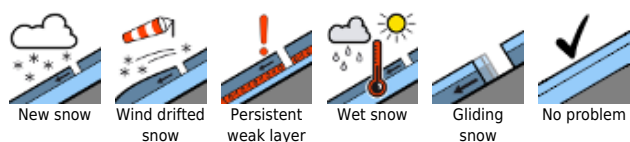
Snowpack structure

Since Thursday there has been 20-30 cm of fresh snow registered widespread. Further snowfall is forecast, with rainfall at low lying areas. Intensifying winds from the west will generate fresh snowdrift accumulations above the timberline, which then will be deposited on top of loosely-packed layers of snow and thus be prone to triggering. At intermediate altitudes the snowpack is wet at ground level, gliding movements are the consequence.

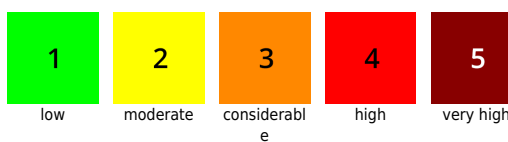
Outlook

The coming days will see more tranquil weather conditions, the snowpack will be able to settle and stabilize in the lower temperatures. Avalanche danger levels will recede gradually.

Avalanche problems



Danger ratings

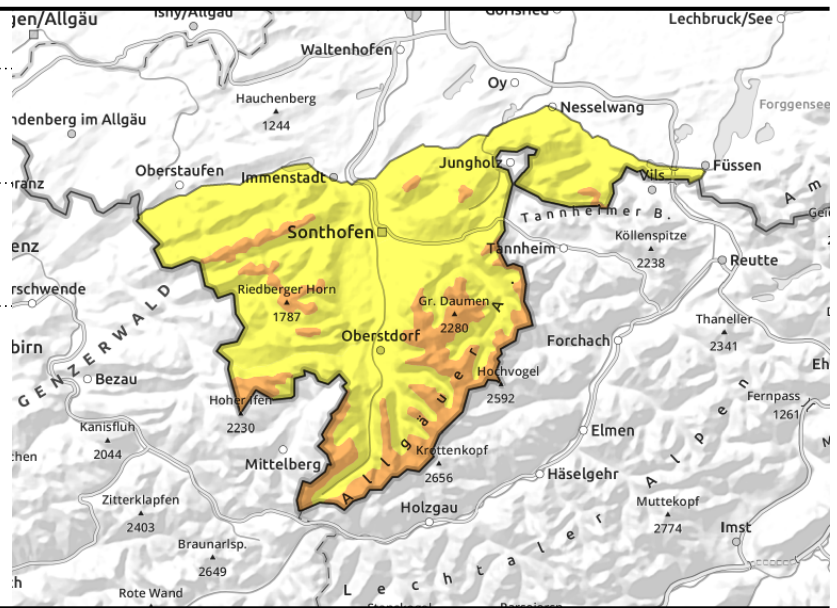
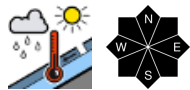
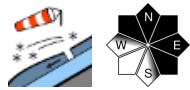


Expositions



04.12.2021

Allgäuer Hauptkamm, Allgäuer Vorberge



Fresh snowdrift accumulations above the timberline are prone to triggering.

Moderate avalanche danger prevails above the treeline. Fresh drifts are the main problem. These can trigger slab avalanches even by the weight of one sole skier. Avalanche prone locations are located above the treeline in steep ridgeline terrain in NW/E/SE aspects and in wind-loaded gullies and bowls. Furthermore, below 1500 m mostly small-sized wet loosely-packed snow and glide-snow avalanches are releasing in isolated cases, particularly in rocky steep terrain and on steep grass-covered slopes in all aspects.

Snowpack structure

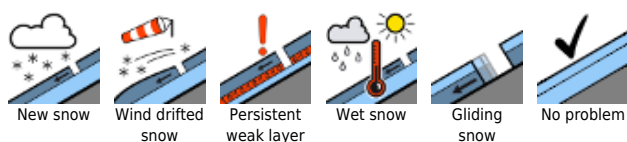
Since Thursday there has been 20-30 cm of fresh snow registered widespread. Further snowfall is forecast, with rainfall at low lying areas. Intensifying winds from the west will generate fresh snowdrift accumulations above the timberline, which then will be deposited on top of loosely-packed layers of snow and thus be prone to triggering. At intermediate altitudes the snowpack is wet at ground level, gliding movements are the consequence.

Outlook

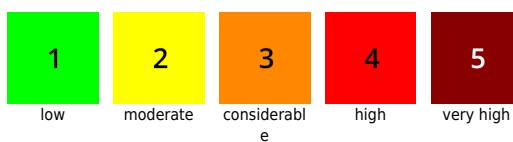
The coming days will see more tranquil weather conditions, the snowpack will be able to settle and stabilize in the lower temperatures. Avalanche danger levels will recede gradually.

Translated by Jeffrey McCabe, www.creativtrans.com

Avalanche problems



Danger ratings



Expositions

