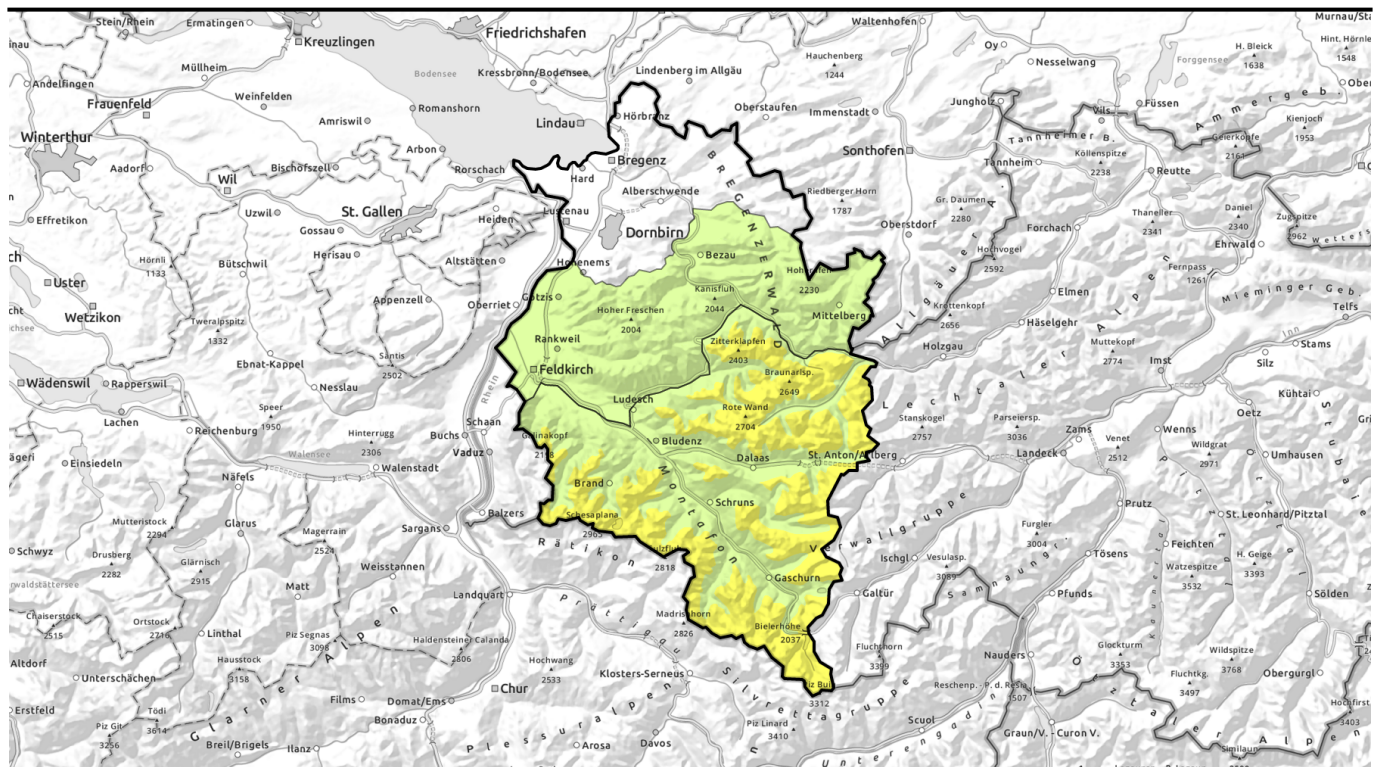


morning



Final Avalanche Bulletin of the season. Morning: still favorable conditions, danger rising during course of day.

	2600 m Rätikon Ost, Silvretta, Rätikon West, Lechquellengebirge, Lechtaler Alpen, Verwall	
	Bregenzerwaldgebirge, Allgäuer Alpen	

Avalanche problems



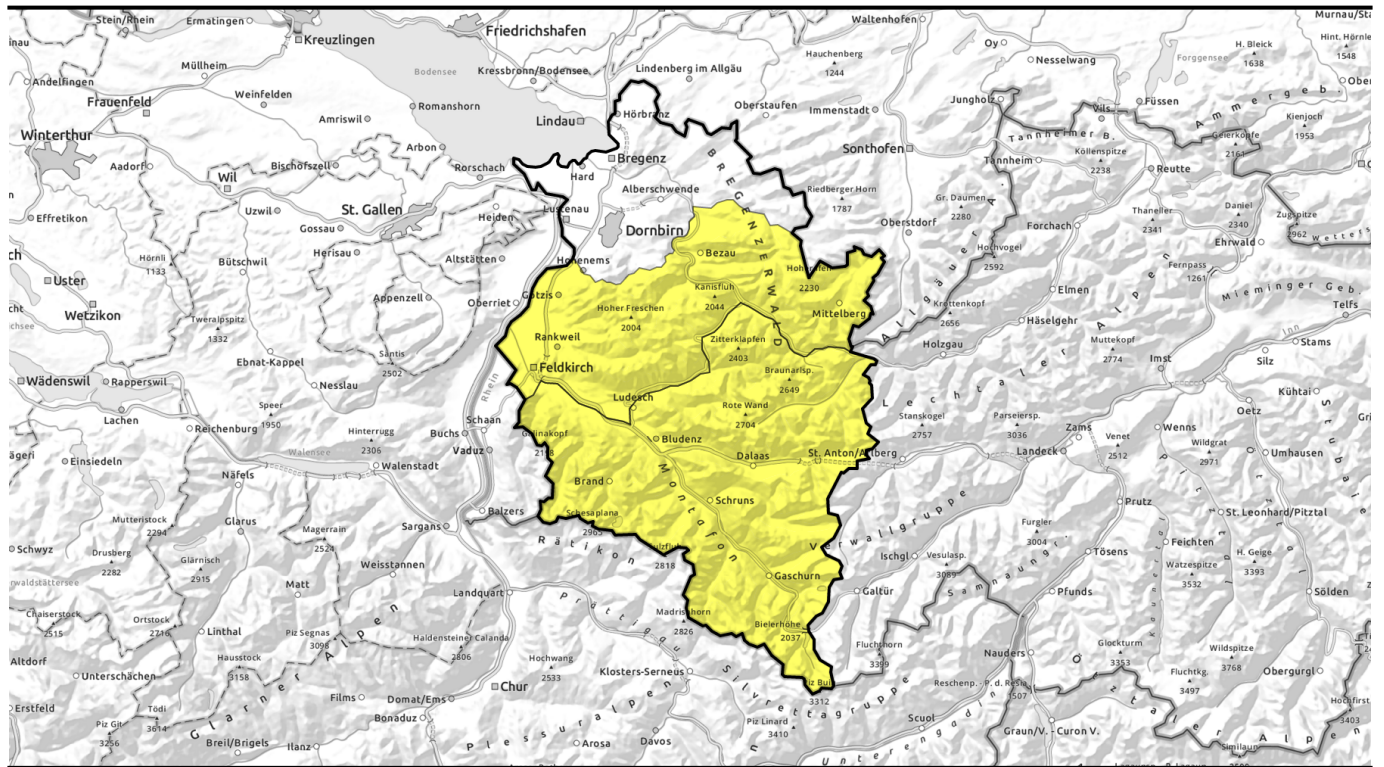
Danger ratings



Expositions



afternoon



letzter Bericht der Saison - vormittags nochmals günstige Verhältnisse und Gefahrenanstieg im Tagesverlauf

	Rätikon Ost, Silvretta, Rätikon West, Lechquellengebirge, Lechtaler Alpen, Verwall	
	Bregenzerwaldgebirge, Allgäuer Alpen	

Avalanche problems



Danger ratings

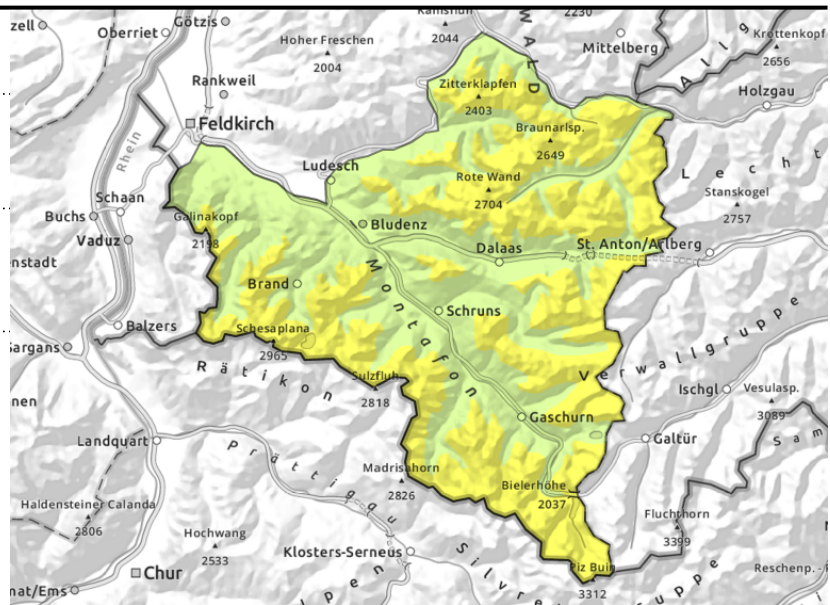
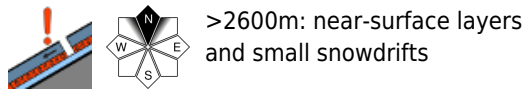
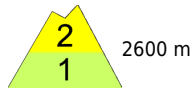


Expositions



morning

**Rätikon Ost, Silvretta, Rätikon West,
 Lechquelleengebirge, Lechtaler Alpen, Verwall**



Often favorable conditions in morning, continuing wet-snow avalanches

Near-surface layers and small drifts can often be triggered, unleashing a small-to-medium slab avalanche. Frequency and size of danger zones increase with ascending altitude. In case of extended bright intervals, medium-sized loose-snow avalanches are possible, possibly endangering exposed zones. Activities in outlying terrain demand experience in assessing avalanche dangers on-site. Danger rises during the course of each day due to warmth and solar radiation. Isolated glide-snow avalanches are possible. Increasing glide-snow avalanches on smooth grass-covered slopes which previously were bare. Avoid zones below glide cracks.

Snowpack structure

At high altitudes there are weak layers embedded in the snowpack, esp. on steep shady slopes, they are trigger-prone, as are freshly generated snowdrift accumulations. Despite high nocturnal clouds the outgoing longwave radiation is good, often forming a melt-freeze crust, softening quickly the next morning, causing the snowpack to forfeit its firmness. Because ski areas are closed there is little information about snowpack layering at high altitudes. At low and intermediate altitudes the lower layers of the snowpack are often wet, which reinforces gliding.

Weather

Nocturnal hours: Dry, mild, reduced nocturnal outgoing longwave radiation. Wednesday daytime: Mild foehn conditions, high clouds and Sahara dust will hamper the sunshine. At 2000 m: +9 degrees. Moderate southerly winds, stronger in foehn lanes.

Outlook

Conditions will become less stable, and also cooler, with intermittent showers or thunderstorms in afternoon. Danger of wet-snow avalanches rises during the course of the day slightly. The daily forecasts are at an end for this season. Further reports will be published in case of unusual situations.

Avalanche problems



Danger ratings



Expositions



afternoon

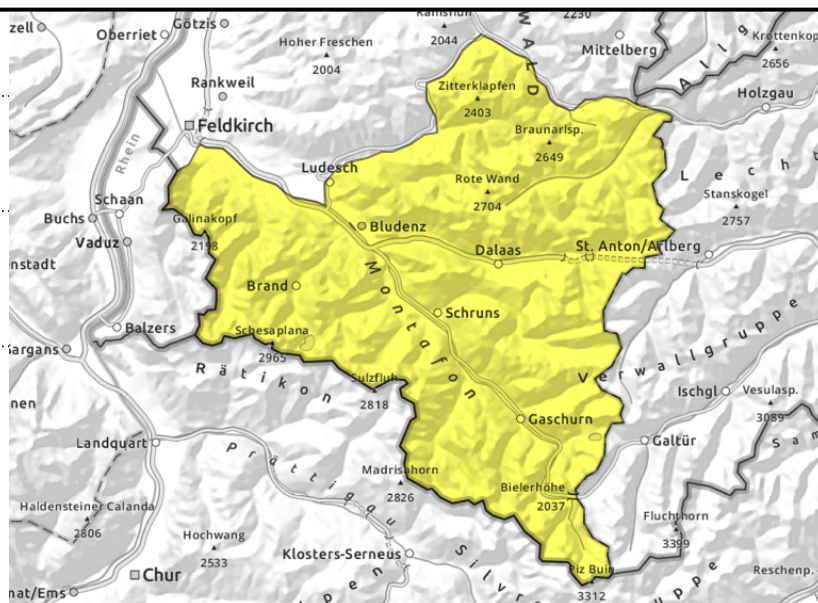
**Rätikon Ost, Silvretta, Rätikon West,
 Lechquelleengebirge, Lechtaler Alpen, Verwall**



increasing wet-snow
 avalanches, continuing gliding
 snow on steep smooth slopes



>2600m: near-surface layers
 and small snowdrifts



Often favorable conditions in morning, continuing wet-snow avalanches

Near-surface layers and small drifts can often be triggered, unleashing a small-to-medium slab avalanche. Frequency and size of danger zones increase with ascending altitude. In case of extended bright intervals, medium-sized loose-snow avalanches are possible, possibly endangering exposed zones. Activities in outlying terrain demand experience in assessing avalanche dangers on-site. Danger rises during the course of each day due to warmth and solar radiation. Isolated glide-snow avalanches are possible. Increasing glide-snow avalanches on smooth grass-covered slopes which previously were bare. Avoid zones below glide cracks.

Snowpack structure

At high altitudes there are weak layers embedded in the snowpack, esp. on steep shady slopes, they are trigger-prone, as are freshly generated snowdrift accumulations. Despite high nocturnal clouds the outgoing longwave radiation is good, often forming a melt-freeze crust, softening quickly the next morning, causing the snowpack to forfeit its firmness. Because ski areas are closed there is little information about snowpack layering at high altitudes. At low and intermediate altitudes the lower layers of the snowpack are often wet, which reinforces gliding.

Weather

Nocturnal hours: Dry, mild, reduced nocturnal outgoing longwave radiation. Wednesday daytime: Mild foehn conditions, high clouds and Sahara dust will hamper the sunshine. At 2000 m: +9 degrees. Moderate southerly winds, stronger in foehn lanes.

Outlook

Conditions will become less stable, and also cooler, with intermittent showers or thunderstorms in afternoon. Danger of wet-snow avalanches rises during the course of the day slightly. The daily forecasts are at an end for this season. Further reports will be published in case of unusual situations.

Avalanche problems



New snow Wind drifted snow Persistent weak layer Wet snow Gliding snow Cornices no distinct

Danger ratings



1 low 2 moderate 3 considerable 4 high 5 very high

Expositions



morning

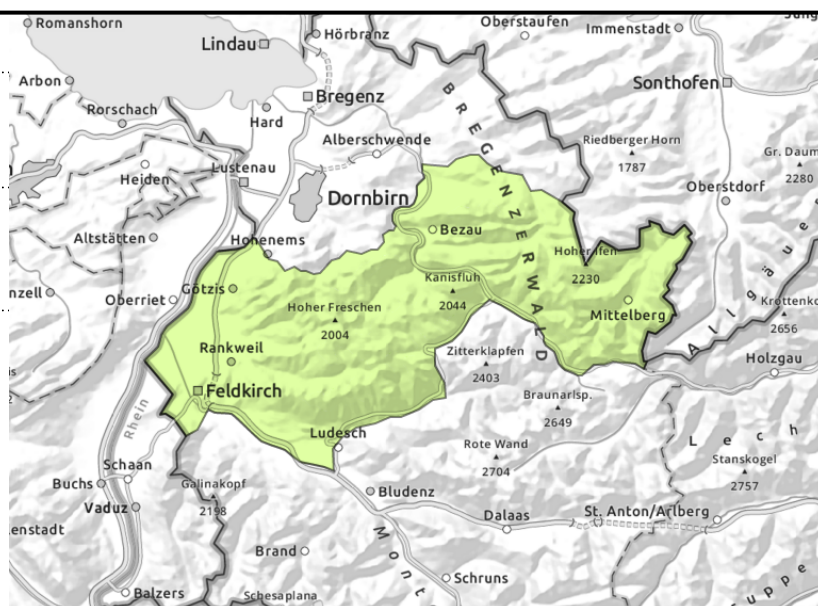
Bregenzerwaldgebirge, Allgäuer Alpen



at any time of day or night



in isolated cases on extremely steep slopes



Often favorable conditions in morning, continuing wet-snow avalanches

Avalanche danger is low in the morning, during the course of the day increasing slides and small-to-medium wet-snow avalanches in sunny steep terrain. Also: glide-snow avalanches are possible at any time of day or night. Avoid zones below glide cracks. Fresh small snowdrifts can trigger a slab avalanches in steep shady terrain above the treeline behind discontinuities and in wind-loaded gullies and bowls. Beware the risks of being forced to take a fall.

Snowpack structure

The snowpack is often wet up to high altitudes, this reinforces gliding movements. Small drifts are trigger-prone esp. on shady slopes. Nocturnal outgoing radiation is good in spite of nocturnal clouds, often forming a melt-freeze crust, softening quickly the next morning, causing the snowpack to forfeit its firmness. Because ski areas are closed there is little information about snowpack layering at high altitudes. Apart from the snowpack wetness, no marked avalanche problem prevails.

Weather

Nocturnal hours: Dry, mild, reduced nocturnal outgoing longwave radiation. Wednesday daytime: Mild foehn conditions, high clouds and Sahara dust will hamper the sunshine. At 2000 m: +9 degrees. Moderate southerly winds, stronger in foehn lanes.

Outlook

Conditions will become less stable, and also cooler, with intermittent showers or thunderstorms in afternoon. Danger of wet-snow avalanches rises during the course of the day slightly. The daily forecasts are at an end for this season. Further reports will be published in case of unusual situations.

Avalanche problems



Danger ratings



Expositions



afternoon

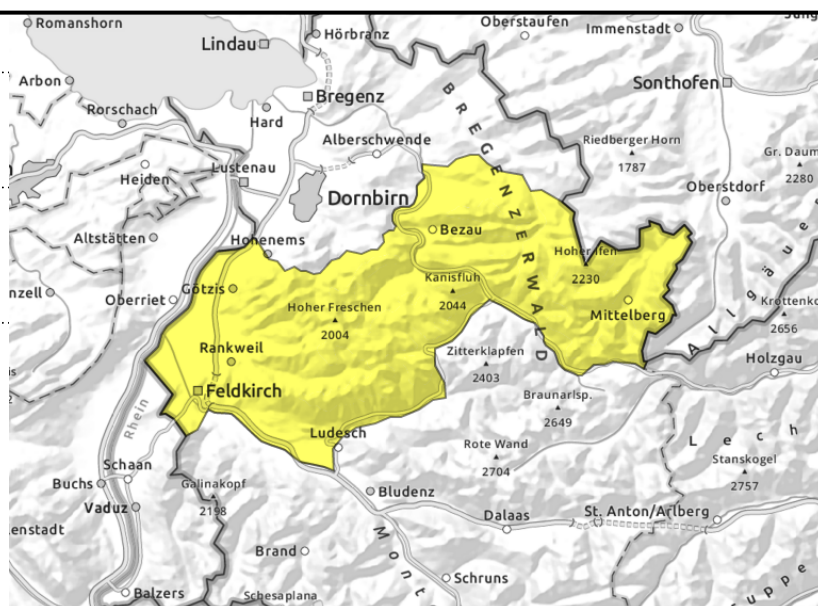
Bregenzerwaldgebirge, Allgäuer Alpen



increasing wet-snow
 avalanches, ongoing gliding
 snow over smooth slopes



in isolated cases on extremely
 steep slopes



Often favorable conditions in morning, continuing wet-snow avalanches

Avalanche danger is low in the morning, during the course of the day increasing slides and small-to-medium wet-snow avalanches in sunny steep terrain. Also: glide-snow avalanches are possible at any time of day or night. Avoid zones below glide cracks. Fresh small snowdrifts can trigger a slab avalanches in steep shady terrain above the treeline behind discontinuities and in wind-loaded gullies and bowls. Beware the risks of being forced to take a fall.

Snowpack structure

The snowpack is often wet up to high altitudes, this reinforces gliding movements. Small drifts are trigger-prone esp. on shady slopes. Nocturnal outgoing radiation is good in spite of nocturnal clouds, often forming a melt-freeze crust, softening quickly the next morning, causing the snowpack to forfeit its firmness. Because ski areas are closed there is little information about snowpack layering at high altitudes. Apart from the snowpack wetness, no marked avalanche problem prevails.

Weather

Nocturnal hours: Dry, mild, reduced nocturnal outgoing longwave radiation. Wednesday daytime: Mild foehn conditions, high clouds and Sahara dust will hamper the sunshine. At 2000 m: +9 degrees. Moderate southerly winds, stronger in foehn lanes.

Outlook

Conditions will become less stable, and also cooler, with intermittent showers or thunderstorms in afternoon. Danger of wet-snow avalanches rises during the course of the day slightly. The daily forecasts are at an end for this season. Further reports will be published in case of unusual situations.

Translated by Jeffrey McCabe, www.creativtrans.com

Avalanche problems



Danger ratings



Expositions

