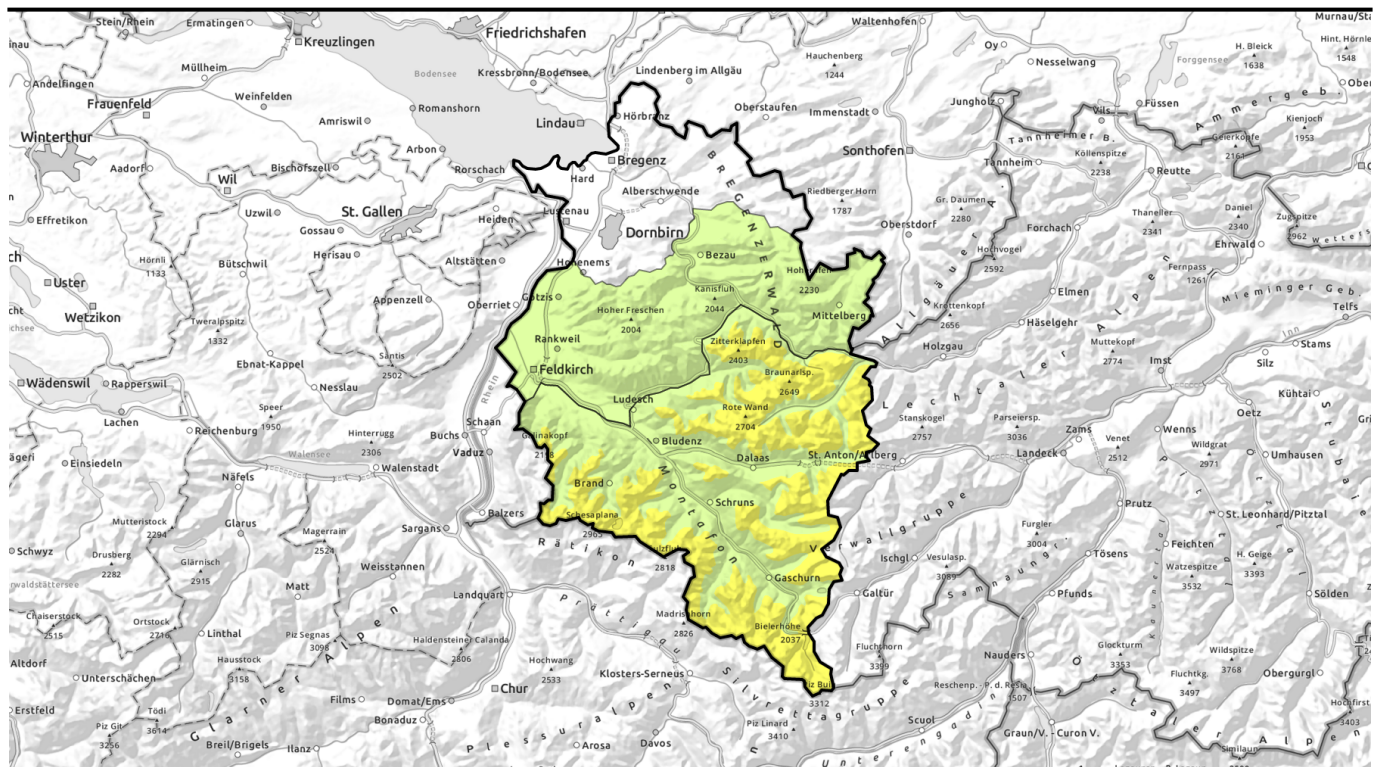


morning



Oftentimes favorable conditions in morning, but worsening during the daytime

	2400 m Rätikon Ost, Silvretta, Rätikon West, Lechquellengebirge, Lechtaler Alpen, Verwall	
	Bregenzerwaldgebirge, Allgäuer Alpen	

Avalanche problems



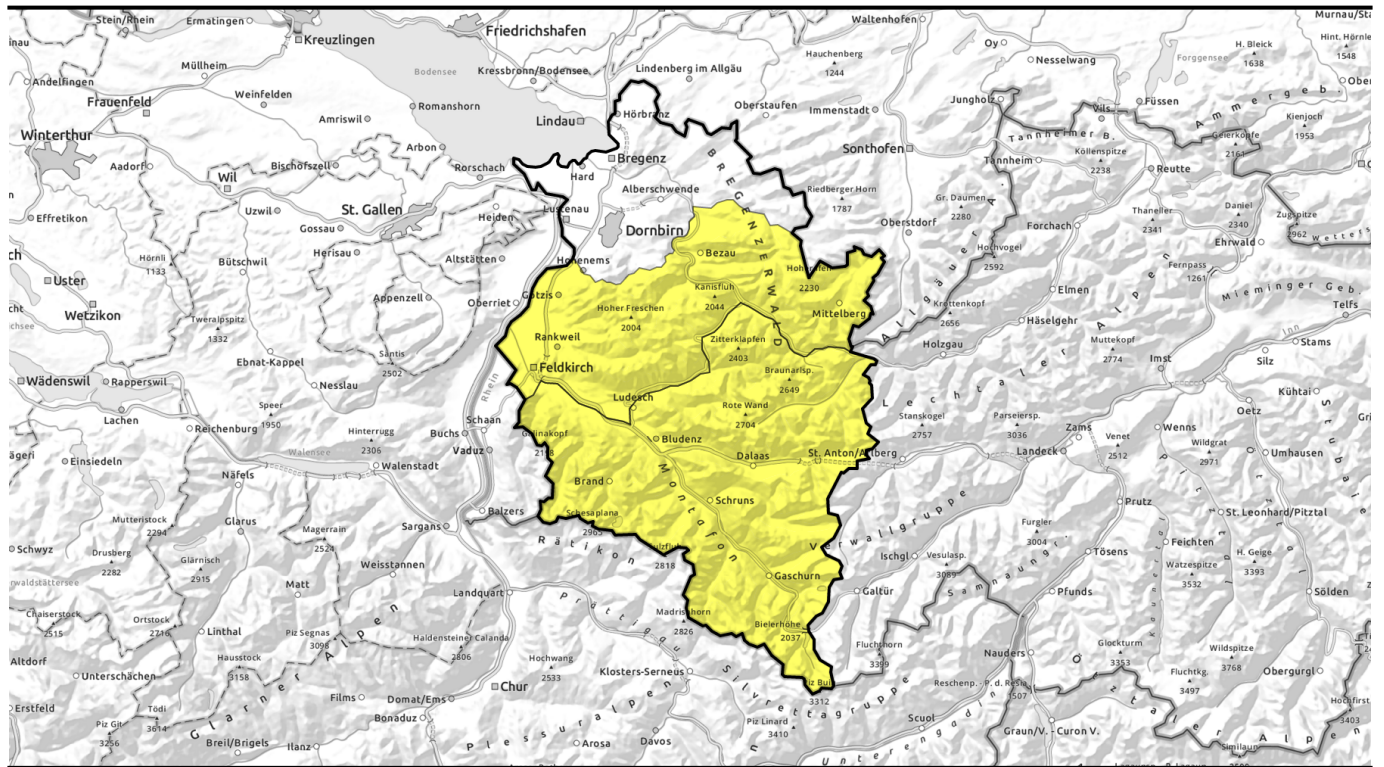
Danger ratings



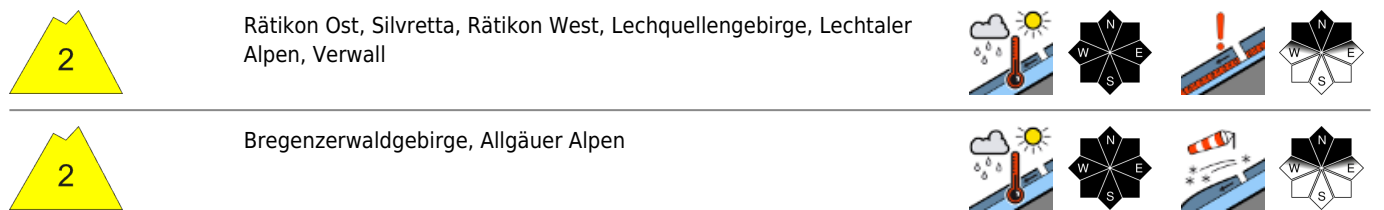
Expositions



afternoon



vormittags oft günstige Verhältnisse aber Gefahrenanstieg im Tagesverlauf



Avalanche problems



Danger ratings



Expositions

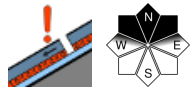


morning

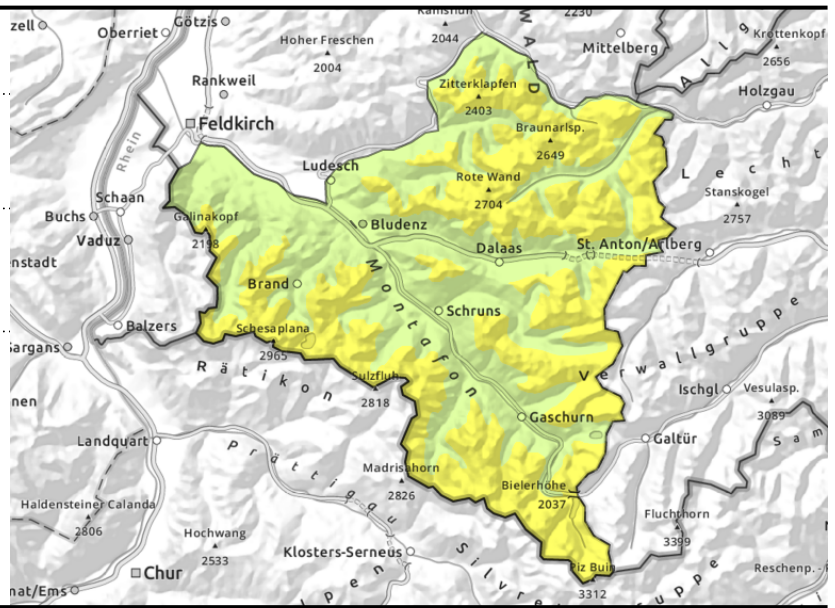
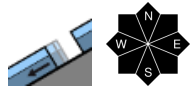
**Rätikon Ost, Silvretta, Rätikon West,
 Lechquelleengebirge, Lechtaler Alpen, Verwall**



>2400m: near-surface layers
 and fresh snowdrifts



steep smooth slopes



Snowdrifts at high altitudes, continuing wet-snow avalanches

Fresh drifts can trigger a medium slab or loose-snow avalanche by 1 person in wind-loaded gullies and bowls, and behind discontinuities; near-surface layers of often trigger-prone. Frequency and size of danger zones increase with ascending altitude. In case of extended bright intervals, medium-sized loose-snow avalanches are possible, possibly endangering exposed zones. Activities in outlying terrain demand experience in assessing avalanche dangers on-site. Danger rises during the course of each day due to warmth and solar radiation. Isolated glide-snow avalanches are possible. Increasing glide-snow avalanches on smooth grass-covered slopes which previously were bare. Avoid zones below glide cracks.

Snowpack structure

At high altitudes there are weak layers embedded in the snowpack, esp. on steep shady slopes, they are trigger-prone, as are freshly generated snowdrift accumulations. Despite high nocturnal clouds the outgoing longwave radiation is good, often forming a melt-freeze crust, softening quickly the next morning, causing the snowpack to forfeit its firmness. Because ski areas are closed there is little information about snowpack layering at high altitudes. At low and intermediate altitudes the lower layers of the snowpack are often wet, which reinforces gliding.

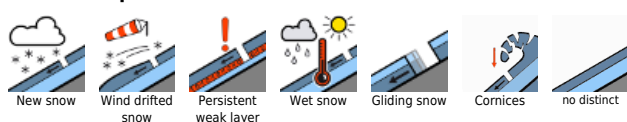
Weather

Nocturnal hours: Dry, mild, good nocturnal outgoing longwave radiation. Monday daytime: High-altitude clouds, sunny but Sahara dust will hamper the sun somewhat. At 2000 m: +6 to +8 degrees. Moderate to strong southerly winds.

Outlook

Foehn wind will continue, and intensify in strength. Sunny despite Sahara dust and very mild. In the southern ranges, more cloud cover. Avalanche danger is subject to a daily danger cycle. Backcountry skiing tours should begin early, end early.

Avalanche problems



Danger ratings



Expositions



afternoon

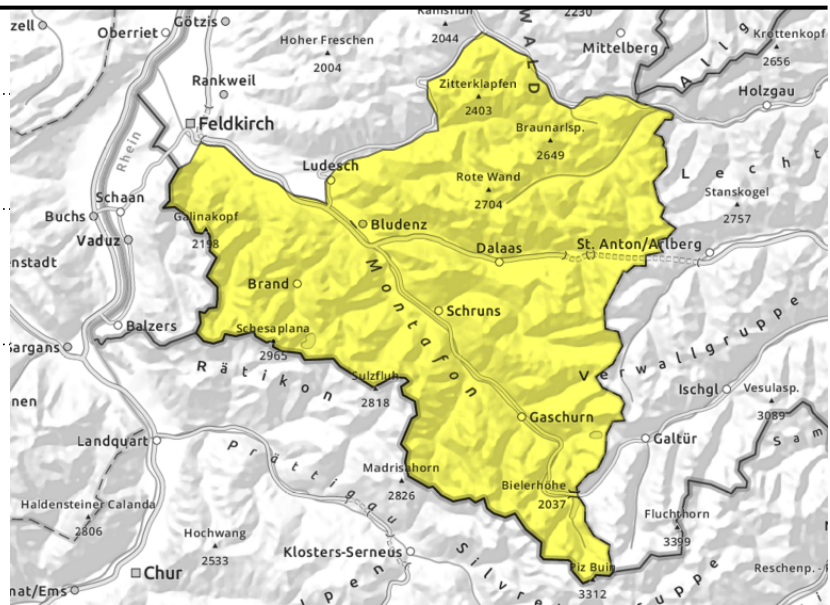
**Rätikon Ost, Silvretta, Rätikon West,
 Lechquelleengebirge, Lechtaler Alpen, Verwall**



increasing wet-snow
 avalanches, continuing gliding
 snow on steep smooth slopes



>2400m: near-surface layers
 and fresh snowdrifts



Snowdrifts at high altitudes, continuing wet-snow avalanches

Fresh drifts can trigger a medium slab or loose-snow avalanche by 1 person in wind-loaded gullies and bowls, and behind discontinuities; near-surface layers of often trigger-prone. Frequency and size of danger zones increase with ascending altitude. In case of extended bright intervals, medium-sized loose-snow avalanches are possible, possibly endangering exposed zones. Activities in outlying terrain demand experience in assessing avalanche dangers on-site. Danger rises during the course of each day due to warmth and solar radiation. Isolated glide-snow avalanches are possible. Increasing glide-snow avalanches on smooth grass-covered slopes which previously were bare. Avoid zones below glide cracks.

Snowpack structure

At high altitudes there are weak layers embedded in the snowpack, esp. on steep shady slopes, they are trigger-prone, as are freshly generated snowdrift accumulations. Despite high nocturnal clouds the outgoing longwave radiation is good, often forming a melt-freeze crust, softening quickly the next morning, causing the snowpack to forfeit its firmness. Because ski areas are closed there is little information about snowpack layering at high altitudes. At low and intermediate altitudes the lower layers of the snowpack are often wet, which reinforces gliding.

Weather

Nocturnal hours: Dry, mild, good nocturnal outgoing longwave radiation. Monday daytime: High-altitude clouds, sunny but Sahara dust will hamper the sun somewhat. At 2000 m: +6 to +8 degrees. Moderate to strong southerly winds.

Outlook

Foehn wind will continue, and intensify in strength. Sunny despite Sahara dust and very mild. In the southern ranges, more cloud cover. Avalanche danger is subject to a daily danger cycle. Backcountry skiing tours should begin early, end early.

Avalanche problems



Danger ratings



Expositions



morning

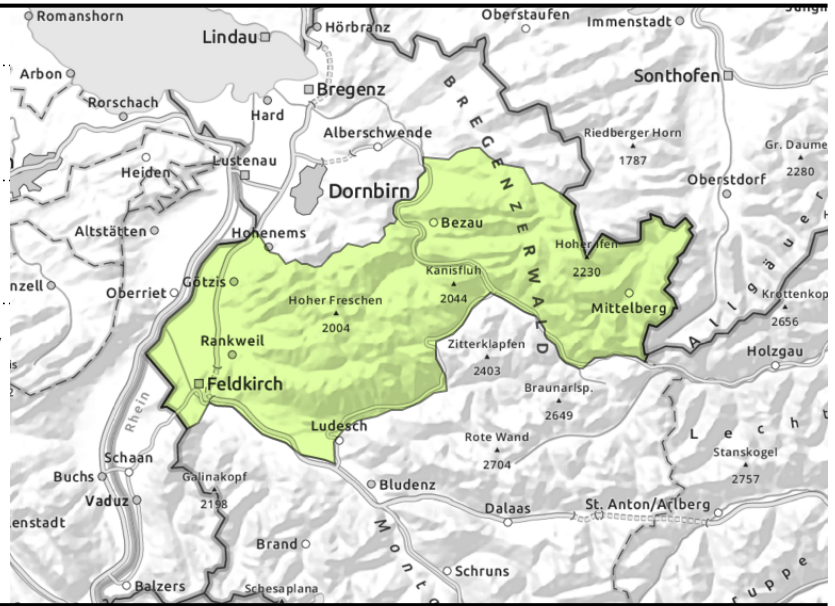
Bregenzerwaldgebirge, Allgäuer Alpen



at any time of day or night



in isolated cases on high shady slopes



Small snowdrifts on shady slopes. Daytime wet-snow avalanches.

Avalanche danger is low in the morning, during the course of the day increasing slides and small-to-medium wet-snow avalanches in sunny steep terrain. Also: glide-snow avalanches are possible at any time of day or night. Avoid zones below glide cracks. Fresh small snowdrifts can trigger a slab avalanches in steep shady terrain above the treeline behind discontinuities and in wind-loaded gullies and bowls. Beware the risks of being forced to take a fall.

Snowpack structure

The lower parts of the snowpack are wet up to high altitudes, this reinforces gliding movements. Small drifts are trigger-prone esp. on shady slopes. Nocturnal outgoing radiation is good in spite of nocturnal clouds, often forming a melt-freeze crust, softening quickly the next morning, causing the snowpack to forfeit its firmness. Because ski areas are closed there is little information about snowpack layering at high altitudes. Apart from the snowpack wetness, no marked avalanche problem prevails.

Weather

Nocturnal hours: Dry, mild, good nocturnal outgoing longwave radiation. Monday daytime: High-altitude clouds, sunny but Sahara dust will hamper the sun somewhat. At 2000 m: +6 to +8 degrees. Moderate to strong southerly winds.

Outlook

Foehn wind will continue, and intensify in strength. Sunny despite Sahara dust and very mild. In the southern ranges, more cloud cover. Avalanche danger is subject to a daily danger cycle. Backcountry skiing tours should begin early, end early.

Avalanche problems



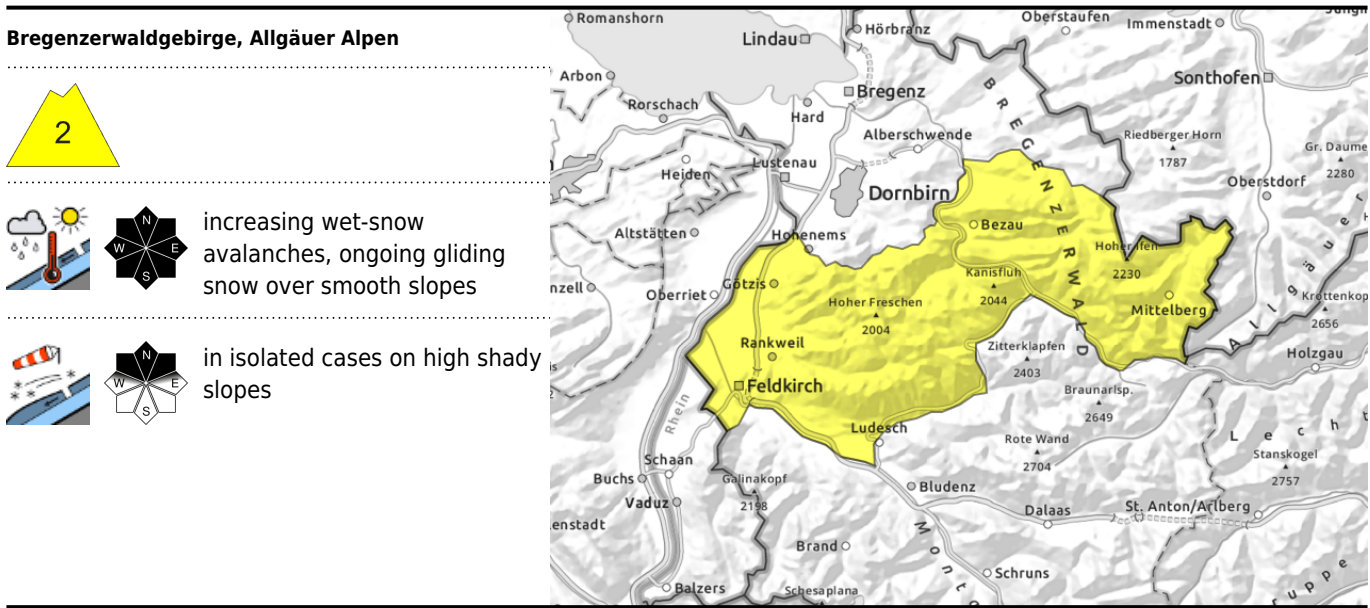
Danger ratings



Expositions



afternoon



Small snowdrifts on shady slopes. Daytime wet-snow avalanches.

Avalanche danger is low in the morning, during the course of the day increasing slides and small-to-medium wet-snow avalanches in sunny steep terrain. Also: glide-snow avalanches are possible at any time of day or night. Avoid zones below glide cracks. Fresh small snowdrifts can trigger a slab avalanches in steep shady terrain above the treeline behind discontinuities and in wind-loaded gullies and bowls. Beware the risks of being forced to take a fall.

Snowpack structure

The lower parts of the snowpack are wet up to high altitudes, this reinforces gliding movements. Small drifts are trigger-prone esp. on shady slopes. Nocturnal outgoing radiation is good in spite of nocturnal clouds, often forming a melt-freeze crust, softening quickly the next morning, causing the snowpack to forfeit its firmness. Because ski areas are closed there is little information about snowpack layering at high altitudes. Apart from the snowpack wetness, no marked avalanche problem prevails.

Weather

Nocturnal hours: Dry, mild, good nocturnal outgoing longwave radiation. Monday daytime: High-altitude clouds, sunny but Sahara dust will hamper the sun somewhat. At 2000 m: +6 to +8 degrees. Moderate to strong southerly winds.

Outlook

Foehn wind will continue, and intensify in strength. Sunny despite Sahara dust and very mild. In the southern ranges, more cloud cover. Avalanche danger is subject to a daily danger cycle. Backcountry skiing tours should begin early, end early.

Translated by Jeffrey McCabe, www.creativtrans.com

Avalanche problems



Danger ratings



Expositions

