

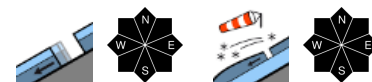
Due to foehn wind, fresh snowdrifts and increasing wet-snow avalanches



Rätikon Ost, Silvretta, Rätikon West



Voralpenbereich, Bregenzerwaldgebirge, Allgäuer Alpen, Lechquellengebirge, Lechtaler Alpen, Verwall



Avalanche problems



Danger ratings



Expositions



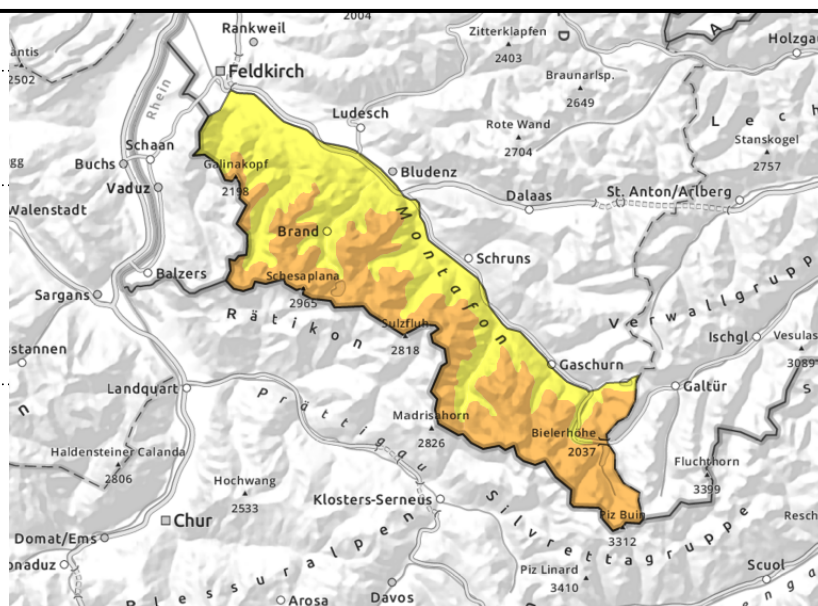
Rätikon Ost, Silvretta, Rätikon West



fresh snow/drifts steep terrain near ridgelines and distant from them, behind discontinuities, in gullies and bowls, loose-snow avalanches



increasing glide-snow avalanches, ongoing gliding snow over smooth slopes



Fresh snow/drifts and increasing glide-snow avalanches

Fresh snow and drifts can trigger a medium slab or loose-snow avalanche by 1 person. Frequency and size of danger zones increase with ascending altitude. In case of extended bright intervals, medium-sized loose-snow avalanches are possible, possibly endangering exposed zones. Activities in outlying terrain demand experience in assessing avalanche dangers on-site. Isolated glide-snow avalanches are possible. Increasing glide-snow avalanches on smooth grass-covered slopes which previously were bare. Avoid zones below glide cracks.

Snowpack structure

Fresh snow and drifts from previous days have settled and slightly consolidated, esp. at intermediate altitudes, it will take longer in high alpine terrain. A further 10 cm of fresh snow, intermittently transported by moderate winds, generated new snowdrift accumulations which now lie deposited atop soft layers where weak layers are embedded. Tonight only a bit of snowfall and little wind. The snowpack is moist-to-wet down to the ground up to high altitudes. Because ski areas are closed there is little information about snowpack layering at high altitudes. The fresh snow at lower altitudes often lies deposited atop what was previously bare ground, reinforcing gliding movement of the snowpack.

Weather

Nocturnal hours: Clouds will disperse, skies will be cold and clear. Friday daytime: Following clear skies to start with, compact cloudbanks will move in, shading the sun. In afternoon, convective cloud build-up. At 2000 m: -3 to +2 degrees. Moderate (stronger in foehn lanes) southwesterly winds.

Outlook

Due to higher temperatures and solar radiation, avalanche danger will increase significantly during the course of the day. Wet-snow/glide-snow avalanches will be more frequent.

Avalanche problems



Danger ratings



Expositions



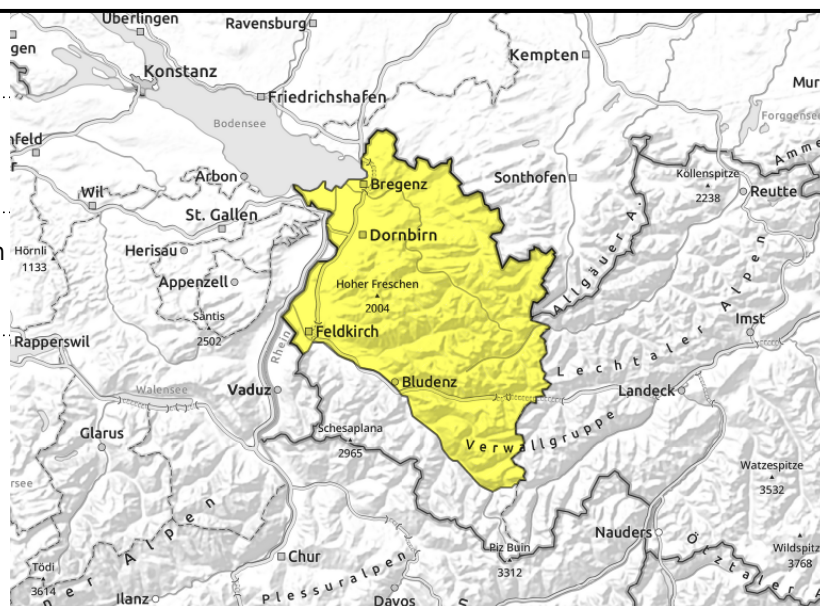
Voralpenbereich, Bregenzerwaldgebirge, Allgäuer Alpen, Lechquellengebirge, Lechtaler Alpen, Verwall



fresh snow/drifts, steep smooth slopes and hillsides



fresh snow/drifts: >treeline steep ridgeline terrain, behind discontinuities, in gullies and bowls



Increasing glide-snow avalanches. Snowdrifts with ascending altitude.

Increasing small-to-medium glide-snow avalanches are possible. Avoid zones below glide cracks. Fresh small snowdrifts can trigger a slab avalanches in steep shady terrain above the treeline behind discontinuities and in wind-loaded gullies and bowls. Frequency and size of danger zones increase with ascending altitude. In case of extended bright intervals, small loose-snow avalanches are possible. Activities in outlying terrain demand experience in assessing avalanche dangers on-site. In case of extended bright intervals, more small-to-medium loose-snow avalanches will be possible in all aspects.

Snowpack structure

Fresh snow and drifts from previous days have settled and slightly consolidated, esp. at intermediate altitudes, it will take longer in high alpine terrain. A further 10 cm of fresh snow, intermittently transported by moderate winds, generated new snowdrift accumulations which now lie deposited atop soft layers where weak layers are embedded. Tonight only a bit of snowfall and little wind. The snowpack is moist-to-wet down to the ground up to high altitudes. Because ski areas are closed there is little information about snowpack layering at high altitudes. The fresh snow at lower altitudes often lies deposited atop what was previously bare ground.

Weather

Nocturnal hours: Clouds will disperse, skies will be cold and clear. Friday daytime: Following clear skies to start with, compact cloudbanks will move in, shading the sun. In afternoon, convective cloud build-up. At 2000 m: -3 to +2 degrees. Moderate (stronger in foehn lanes) southwesterly winds.

Outlook

Due to higher temperatures and solar radiation, avalanche danger will increase significantly during the course of the day. Wet-snow/glide-snow avalanches will be more frequent.

Translated by Jeffrey McCabe, www.creativtrans.com

Avalanche problems



Danger ratings



Expositions

