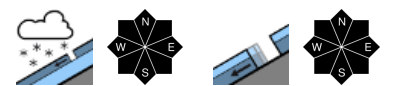


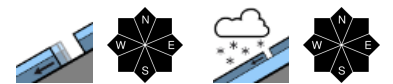
## Regionally considerable avalanche danger. Increasing glide-snow avalanches.



Rätikon Ost, Silvretta, Rätikon West



Voralpenbereich, Bregenzerwaldgebirge, Allgäuer Alpen, Lechquellengebirge, Lechtaler Alpen, Verwall



### Avalanche problems



### Danger ratings



### Expositions



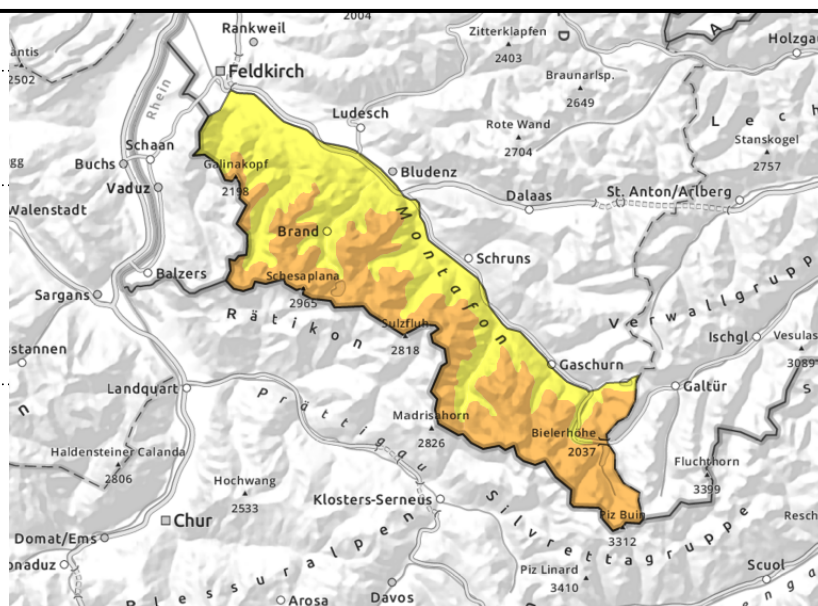
**Rätikon Ost, Silvretta, Rätikon West**



fresh snow/drifts steep terrain near ridgelines and distant from them, behind discontinuities, in gullies and bowls, loose-snow avalanches



steep smooth slopes freshly snowed-upon



**Fresh snow/snowdrifts + increasing glide-snow avalanches**

Fresh snow and drifts can trigger a medium slab or loose-snow avalanche by 1 person. Frequency and size of danger zones increase with ascending altitude. In case of extended bright intervals, medium-sized loose-snow avalanches are possible, possibly endangering exposed zones. Activities in outlying terrain demand experience in assessing avalanche dangers on-site. Isolated glide-snow avalanches are possible. Increasing glide-snow avalanches on smooth grass-covered slopes which previously were bare. Avoid zones below glide cracks.

**Snowpack structure**

Fresh snow and drifts from previous days have settled and slightly consolidated, esp. at intermediate altitudes, it will take longer in high alpine terrain. A further 10 cm of fresh snow, intermittently transported by moderate winds, generated new snowdrift accumulations which now lie deposited atop soft layers where weak layers are embedded. Tonight only a bit of snowfall and little wind. The snowpack is moist-to-wet down to the ground up to high altitudes. Because ski areas are closed there is little information about snowpack layering at high altitudes. The fresh snow at lower altitudes often lies deposited atop what was previously bare ground.

**Weather**

Nocturnal hours: Heavily overcast skies, intermittent rainfall/snowfall above 500 m. Thursday daytime: Overcast with showers, occasional sunshine, slightly higher temperatures. At 2000 m: -8 to -3 degrees. Light westerly winds.

**Outlook**

Friday will be quite sunny and increasingly foehn-impacted, temperatures at 2000 m reaching plus values. Often brisk SW winds, which will generate fresh snowdrift accumulations. Also wet-snow and glide-snow avalanches will be possible as temperatures rise.

**Avalanche problems**



**Danger ratings**



**Expositions**



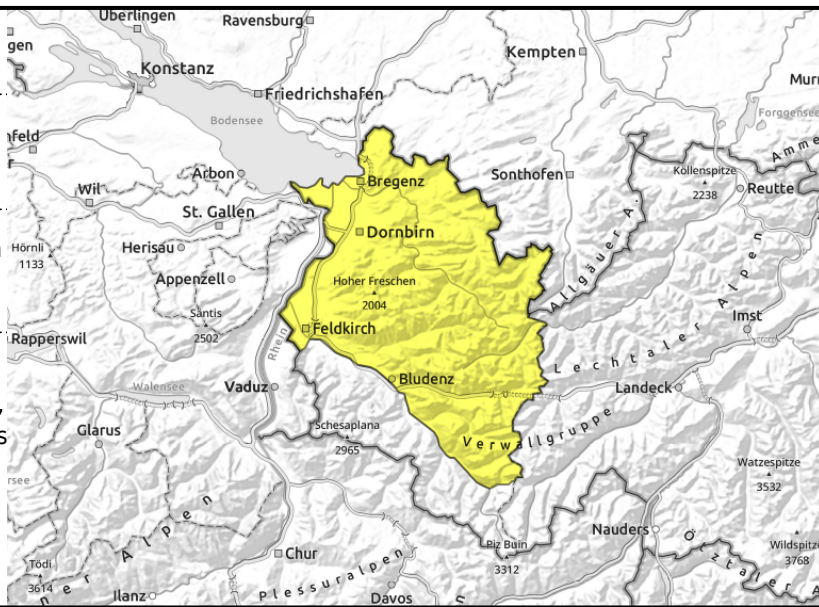
**Voralpenbereich, Bregenzerwaldgebirge, Allgäuer Alpen, Lechquellengebirge, Lechtaler Alpen, Verwall**



fresh snow/drifts, steep smooth slopes and hillsides



fresh snow/drifts: w/ascending altitude, steep ridgeline terrain, behind discontinuities, in gullies and bowls



**Increasing glide-snow avalanches. Snowdrifts with ascending altitude.**

Increasing small-to-medium glide-snow avalanches are possible. Avoid zones below glide cracks. Fresh small snowdrifts can trigger a slab avalanches in steep shady terrain above the treeline behind discontinuities and in wind-loaded gullies and bowls. Frequency and size of danger zones increase with ascending altitude. In case of extended bright intervals, small loose-snow avalanches are possible. Activities in outlying terrain demand experience in assessing avalanche dangers on-site. In case of extended bright intervals, more small-to-medium loose-snow avalanches will be possible in all aspects.

**Snowpack structure**

Fresh snow and drifts from previous days have settled and slightly consolidated, esp. at intermediate altitudes, it will take longer in high alpine terrain. A further 10 cm of fresh snow, intermittently transported by moderate winds, generated new snowdrift accumulations which now lie deposited atop soft layers where weak layers are embedded. Tonight only a bit of snowfall and little wind. The snowpack is moist-to-wet down to the ground up to high altitudes. Because ski areas are closed there is little information about snowpack layering at high altitudes. The fresh snow at lower altitudes often lies deposited atop what was previously bare ground.

**Weather**

Nocturnal hours: Heavily overcast skies, intermittent rainfall/snowfall above 500 m. Thursday daytime: Overcast with showers, occasional sunshine, slightly higher temperatures. At 2000 m: -8 to -3 degrees. Light westerly winds.

**Outlook**

Friday will be quite sunny and increasingly foehn-impacted, temperatures at 2000 m reaching plus values. Often brisk SW winds, which will generate fresh snowdrift accumulations. Also wet-snow and glide-snow avalanches will be possible as temperatures rise.

Translated by Jeffrey McCabe, [www.creativtrans.com](http://www.creativtrans.com)

**Avalanche problems**



**Danger ratings**



**Expositions**

