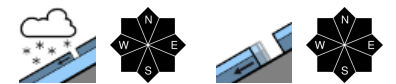


Regionally considerable avalanche danger at high altitudes. Increasing glide-snow avalanches.



2000 m Rätikon Ost, Silvretta, Rätikon West, Verwall, Lechtaler Alpen, Lechquellengebirge



Voralpenbereich, Bregenzerwaldgebirge, Allgäuer Alpen



Avalanche problems



Danger ratings



Expositions



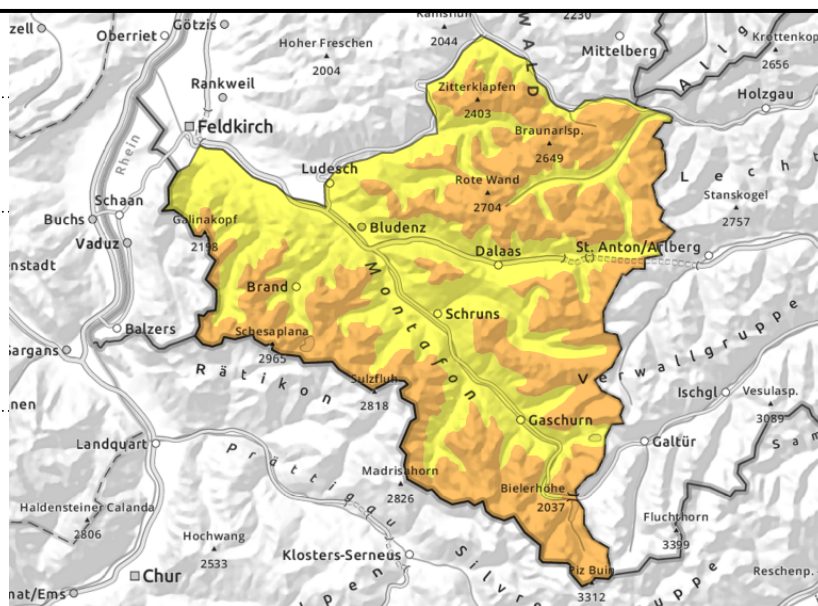
Rätikon Ost, Silvretta, Rätikon West, Verwall, Lechtaler Alpen, Lechquellengebirge



fresh snow/drifts steep terrain near ridgelines and distant from them, behind discontinuities, in gullies and bowls, loose-snow avalanches



freshly snowed-upon steep smooth slopes



Fresh snow/snowdrifts + glide-snow avalanches again

Avalanche danger above 2000 m is considerable. Fresh snow and drifts can trigger a medium slab or loose-snow avalanche by 1 person. Frequency and size of danger zones increase with ascending altitude. In case of extended bright intervals, medium-sized loose-snow avalanches are possible, possibly endangering exposed zones. Activities in outlying terrain demand experience in assessing avalanche dangers on-site. Isolated glide-snow avalanches are possible. Increasing glide-snow avalanches on smooth grass-covered slopes which previously were bare.

Snowpack structure

Fresh snow and drifts from previous days have settled and slightly consolidated, esp. at intermediate altitudes. A further 10-15 cm of fresh snow, intermittently transported by moderate winds, will generate new snowdrift accumulations. With ascending altitude the fresh snow and drifts will lie deposited atop soft layers and are prone to triggering. There are often weak layer inside the drifts and the uppermost layers of fresh snow (wind impact and graupel). The snowpack is moist-to-wet down to the ground up to high altitudes. The fresh snow at lower altitudes often lies deposited atop what was previously bare ground.

Weather

Nocturnal hours: Heavily overcast skies, foggy, 10-15 cm of fresh snow expected.. Tuesday daytime: A few showers in the morning, increasing and intensifying in afternoon, often poor visibility. At 2000 m: -7 degrees. Moderate NE winds.

Outlook

Wednesday will be instable, intermittent snowfall and poor visibility. In afternoon, some bright intervals are possible. In the mountains it will remain cold, moderate N/W winds. For the moment, avalanche danger levels are not expected to change significantly at high altitudes.

Avalanche problems



Danger ratings



Expositions



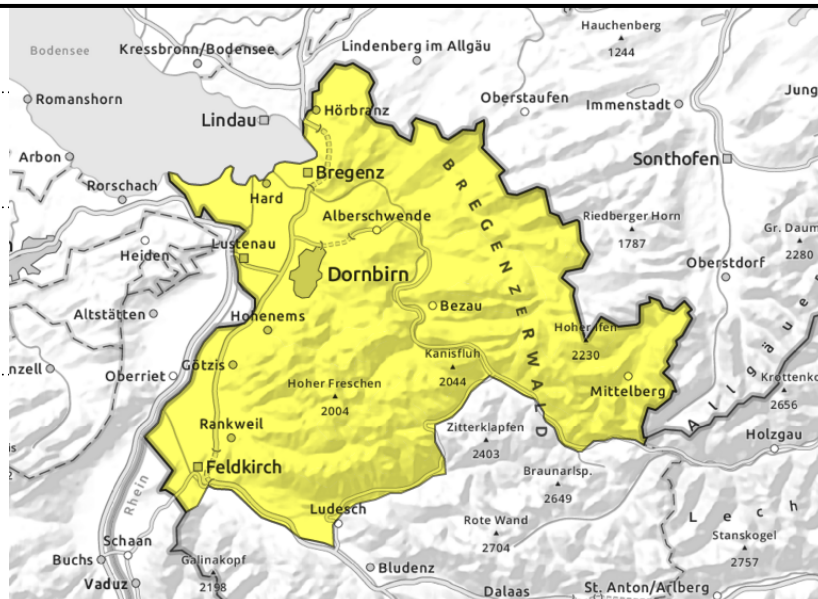
Voralpenbereich, Bregenzerwaldgebirge, Allgäuer Alpen



>timberline: fresh snow/drifts, steep ridgeline terrain, behind discontinuities, in gullies and bowls



freshly snowed-upon steep smooth slopes



Small snowdrifts. Increasing glide-snow avalanches.

Avalanche danger is moderate. Fresh drifts above the treeline behind discontinuities and in gullies and bowls can be triggered by 1 person as a slab. Frequency and size of danger zones increase with ascending altitude. In case of extended bright intervals, small loose-snow avalanches are possible. Activities in outlying terrain demand experience in assessing avalanche dangers on-site. Isolated glide-snow avalanches are possible. Increasing glide-snow avalanches on smooth grass-covered slopes which previously were bare.

Snowpack structure

Fresh snow and drifts from previous days have settled and slightly consolidated, esp. at intermediate altitudes. A further 10-15 cm of fresh snow, intermittently transported by moderate winds, will generate new snowdrift accumulations. With ascending altitude the fresh snow and drifts will lie deposited atop soft layers and are prone to triggering. There are often weak layer inside the drifts and the uppermost layers of fresh snow (wind impact and graupel). The snowpack is moist-to-wet down to the ground up to high altitudes. The fresh snow at lower altitudes often lies deposited atop what was previously bare ground.

Weather

Nocturnal hours: Heavily overcast skies, foggy, 10-15 cm of fresh snow expected.. Tuesday daytime: A few showers in the morning, increasing and intensifying in afternoon, often poor visibility. At 2000 m: -7 degrees. Moderate NE winds.

Outlook

Wednesday will be instable, intermittent snowfall and poor visibility. In afternoon, some bright intervals are possible. In the mountains it will remain cold, moderate N/W winds. For the moment, avalanche danger levels are not expected to change significantly at high altitudes.

Translated by Jeffrey McCabe, www.creativtrans.com

Avalanche problems



Danger ratings



Expositions

