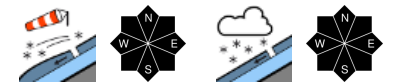


Fresh snowdrift accumulations prone to triggering



Rätikon Ost, Silvretta, Rätikon West, Verwall, Lechtaler Alpen, Lechquellengebirge, Bregenzerwaldgebirge, Allgäuer Alpen



Voralpenbereich



Avalanche problems



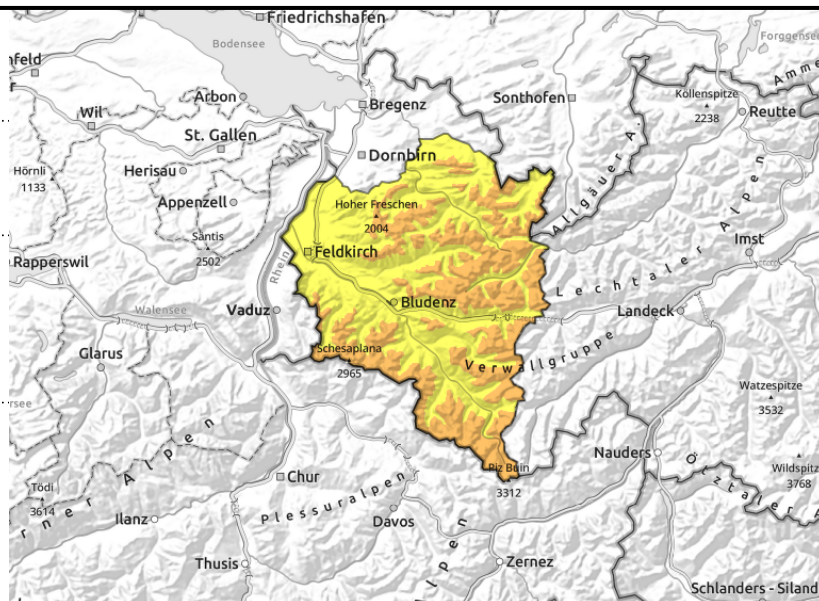
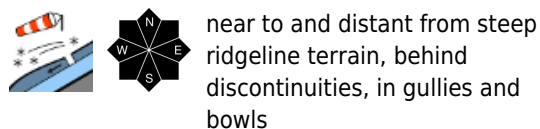
Danger ratings



Expositions



Rätikon Ost, Silvretta, Rätikon West, Verwall, Lechtaler Alpen, Lechquellengebirge, Bregenzerwaldgebirge, Allgäuer Alpen



One winter sports enthusiast can trigger large-sized avalanches

Avalanche danger above 1800 m is considerable, below that altitude danger is moderate. Fresh drifts can trigger a medium slab by 1 person. Danger zones occur esp. in steep ridgeline terrain, behind discontinuities and in gullies and bowls. Frequency and size of danger zones increase with ascending altitude and during the course of the day. Activities in outlying terrain demand experience in assessing avalanche dangers on-site. Isolated glide-snow avalanches are possible. Avoid zones below glide-cracks. In case of extended bright intervals, small loose-snow avalanches are possible.

Snowpack structure

The large amounts of fresh fallen snow have settled and stabilized. As a result of strong-to-stormy westerly winds, further and far-reaching snowdrift accumulations will be generated over the course of the day, at high altitudes deposited atop soft layers and prone to triggering. Inside the drifted masses and fresh snow are weak layers (sometimes graupel). Prior to the snowfall the slopes were bare up to intermediate altitudes. The fresh snow lies on bare ground or a moist snowpack and is well bonded. The snowpack is often wet down to the ground, and tends towards gliding downhill as a mass. Small glide-snow avalanches are being observed on slopes which before were bare of snow.

Weather

Nocturnal hours: Heavy snowfall, snowfall level at 700-900 m, temporarily dropping down to the Rhine Valley in early morning. Saturday daytime: In the barrier cloud regions between Bregenzerwald mountains and Verwall, large amounts of snowfall are still anticipated. At 2000 m: -7 degrees. Moderate to strong N/NW winds.

Outlook

Also on Sunday, the late-winter instable weather will persist, with intermitten snow and graupel showers. The avalanche situation will remain tense.

Avalanche problems



Danger ratings



Expositions



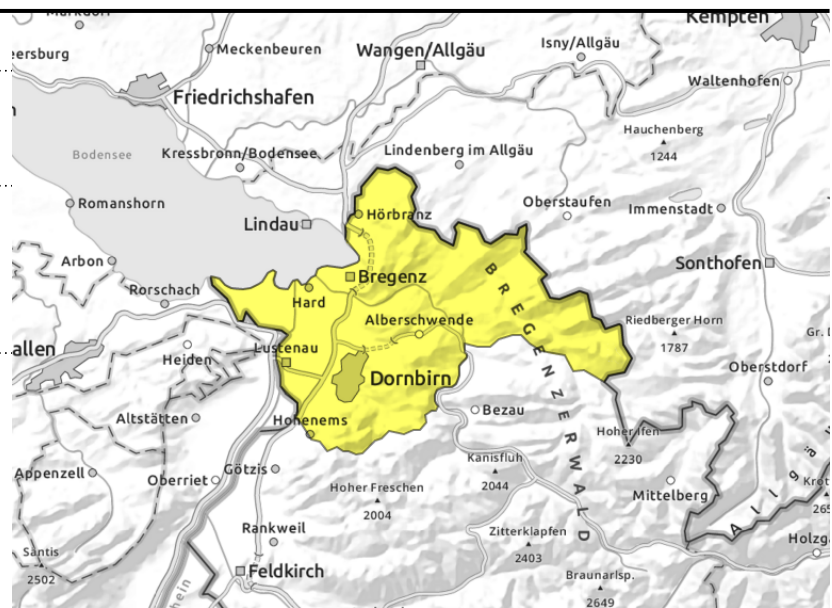
Voralpenbereich



near to and distant from ridgeline terrain, behind discontinuities, in gullies and bowls



heavy snowfall



One winter sports enthusiast can trigger large-sized avalanches

Avalanche danger is moderate. Fresh drifts can trigger a medium slab by 1 person. On the one hand, fresh ridgeline (and distant from ridges) snowdrifts can be triggered as a slab avalanche by 1 person - frequency and size of danger zones increase with ascending altitude and during the course of the day - and on the other, in case of extended bright intervals small loose-snow avalanches can trigger naturally, or by a person, and grow to medium size. Backcountry tours demand careful planning. Glide-snow avalanches are still possible.

Snowpack structure

The large amounts of fresh fallen snow have settled and stabilized. As a result of strong-to-stormy westerly winds, further and far-reaching snowdrift accumulations will be generated over the course of the day, at high altitudes deposited atop soft layers and prone to triggering. Inside the drifted masses and fresh snow are weak layers (sometimes graupel). Prior to the snowfall the slopes were bare up to intermediate altitudes. The fresh snow lies on bare ground or a moist snowpack and is well bonded. The snowpack is often wet down to the ground, and tends towards gliding downhill as a mass. Small glide-snow avalanches are being observed on slopes which before were bare of snow.

Weather

Nocturnal hours: Heavy snowfall, snowfall level at 700-900 m, temporarily dropping down to the Rhine Valley in early morning. Saturday daytime: In the barrier cloud regions between Bregenzerwald mountains and Verwall, large amounts of snowfall are still anticipated. At 2000 m: -7 degrees. Moderate to strong N/NW winds.

Outlook

Also on Sunday, the late-winter instable weather will persist, with intermitten snow and graupel showers. The avalanche situation will remain tense.

Translated by Jeffrey McCabe, www.creativtrans.com

Avalanche problems



Danger ratings



Expositions

