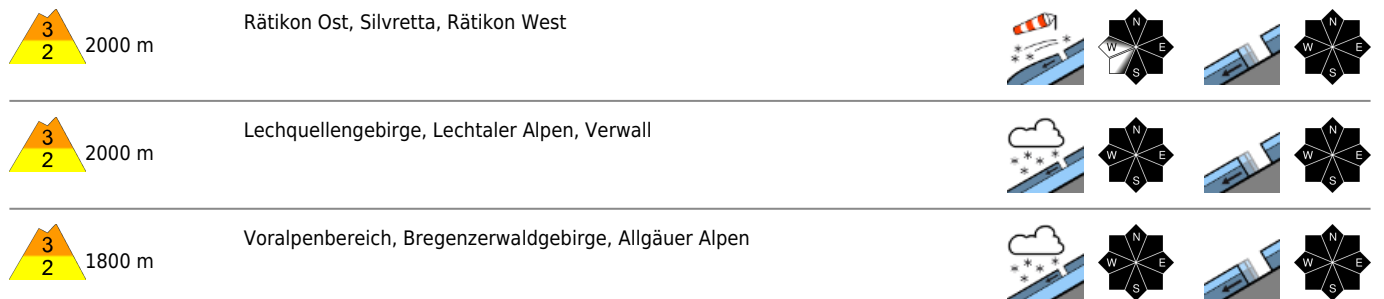
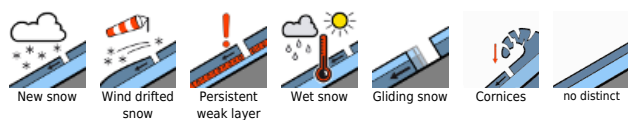


Correction: snow depths. Lots of fresh snow in places + strong wind and drifts



Avalanche problems



Danger ratings



Expositions



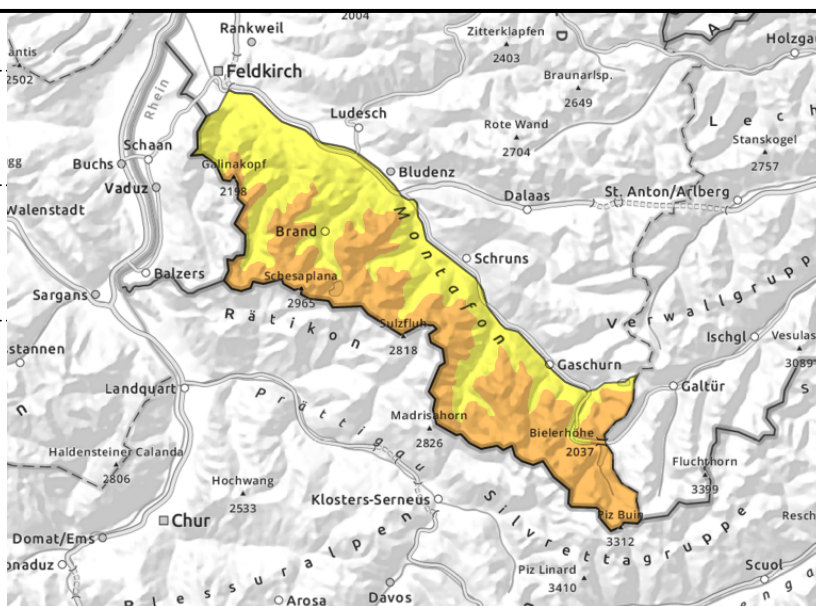
Rätikon Ost, Silvretta, Rätikon West



steep ridgeline terrain, behind discontinuities, in gullies and bowls



isolated glide-snow avalanches



Trigger-prone snowdrifts due to fresh snow + winds

Avalanche danger above 2000 m is considerable, below that altitude danger is moderate. Fresh drifts can trigger a medium slab by 1 person. Danger zones occur esp. in steep ridgeline terrain, behind discontinuities and in gullies and bowls. Frequency and size of danger zones increase with ascending altitude and during the course of the day. Activities in outlying terrain demand experience in assessing avalanche dangers on-site. Isolated glide-snow avalanches are possible. Avoid zones below glide-cracks. In case of extended bright intervals, small loose-snow avalanches are possible.

Snowpack structure

Over the last 48 hours in northern regions there has been up to 65 cm of fresh snow registered, in Lechquellen 40-50 cm, in Verwall 40 cm, and in the southern Rätikon-Silvretta region up to 35 cm. Amid winds from the northwest, the fresh snow was transported. In the new drifts are weak layers (often with graupel). Prior to the snowfall the slopes were bare up to intermediate altitudes. The fresh snow lies on bare ground or a moist snowpack and is well bonded. The snowpack is often wet down to the ground, and tends towards gliding downhill as a mass. Small glide-snow avalanches are being observed on slopes which before were bare of snow.

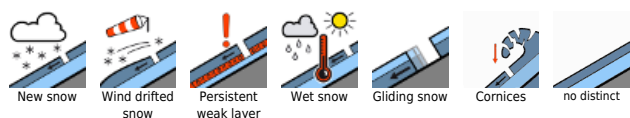
Weather

Cold April weather will continue, graupel and snow showers will pass through, focus in the barrier cloud regions between Arlberg and Bregenzerwald mountains. At 2000 m: -10 to -6 degrees. Gusty northerly winds.

Outlook

Until the end of the week, fresh snow will arrive in several bouts, focus in NW barrier cloud regions between Verwall, Arlberg and Bregenzerwald. The avalanche situation will remain tense.

Avalanche problems



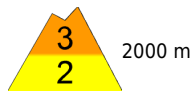
Danger ratings



Expositions



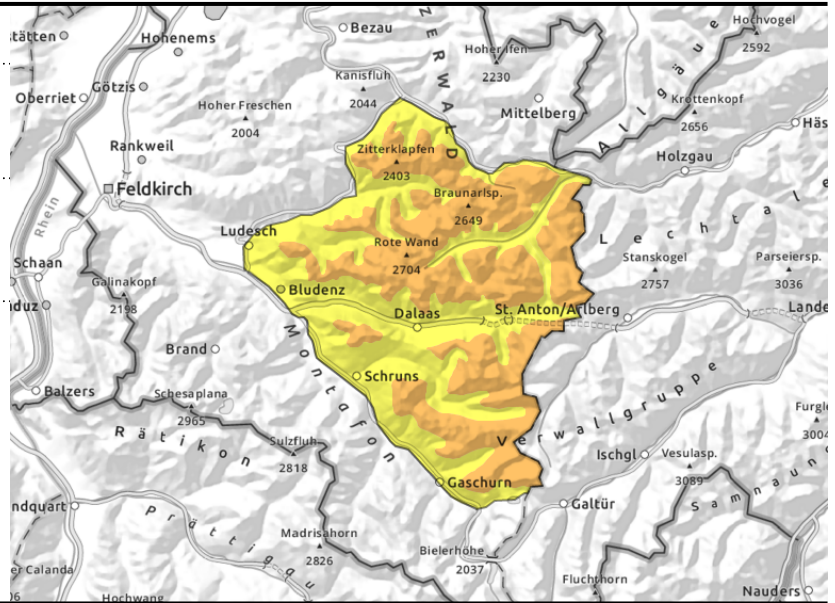
Lechquellengebirge, Lechtaler Alpen, Verwall



fresh snow and drifts trigger-prone



isolated glide-snow avalanches



Fresh snow and drifts are prone to triggering

Avalanche danger above 2000 m is considerable, below that altitude danger is moderate. Fresh snow and drifts are prone to triggering. Medium avalanches can be triggered by 1 person. Snowdrift accumulations lie deposited in steep ridgeline terrain, behind discontinuities and in gullies and bowls. Backcountry undertakings require experience in assessing dangers on-site. Isolated glide-snow avalanches are still possible. Avoid zones below glide cracks. In case of extended bright intervals, small loose-snow avalanches can trigger naturally.

Snowpack structure

Over the last 48 hours in northern regions there has been up to 65 cm of fresh snow registered, in Lechquellen 40-50 cm, in Verwall 40 cm, and in the southern Rätikon-Silvretta region up to 35 cm. Amid winds from the northwest, the fresh snow was transported. In the new drifts are weak layers (often with graupel). Prior to the snowfall the slopes were bare up to intermediate altitudes. The fresh snow lies on bare ground or a moist snowpack and is well bonded. The snowpack is often wet down to the ground, and tends towards gliding downhill as a mass. Small glide-snow avalanches are being observed on slopes which before were bare of snow.

Weather

Cold April weather will continue, graupel and snow showers will pass through, focus in the barrier cloud regions between Arlberg and Bregenzerwald mountains. At 2000 m: -10 to -6 degrees. Light but gusty northerly winds.

Outlook

Until the end of the week, fresh snow will arrive in several bouts, focus in NW barrier cloud regions between Verwall, Arlberg and Bregenzerwald. The avalanche situation will remain tense.

Avalanche problems



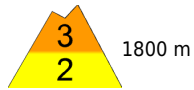
Danger ratings



Expositions

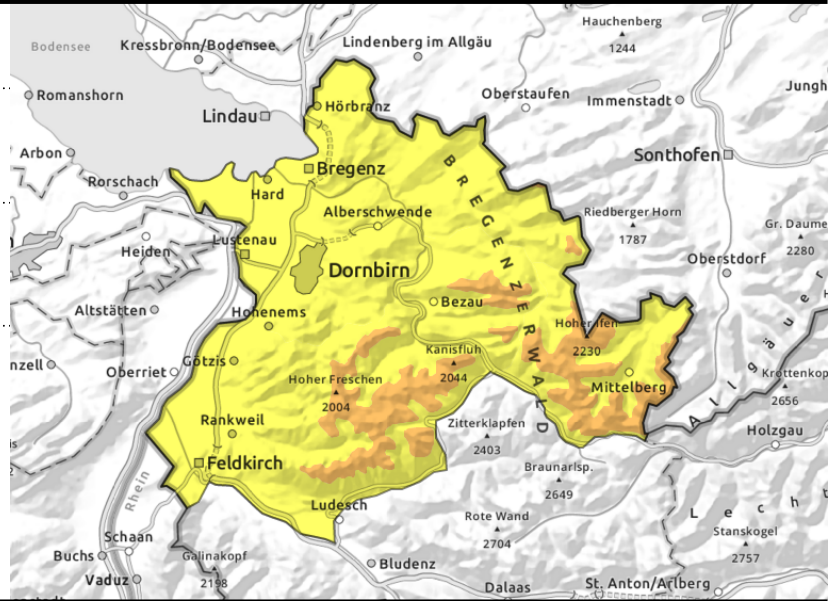


Voralpenbereich, Bregenzerwaldgebirge, Allgäuer Alpen



fresh snow and drifts trigger-prone

isolated glide-snow avalanches



Fresh snow and drifts are trigger-prone

Avalanche danger above 1800 m is moderate, below that altitude danger is low. Fresh snow and drifts are prone to triggering. Small-to-medium avalanches can be triggered by 1 person. Danger zones occur esp. in steep ridgeline terrain, behind discontinuities and in gullies and bowls. Frequency and size of danger zones increase with ascending altitude and during the course of the day. Activities in outlying terrain demand experience in assessing avalanche dangers on-site. Isolated glide-snow avalanches are possible. Avoid zones below glide-cracks. In case of extended bright intervals, small loose-snow avalanches are possible.

Snowpack structure

Over the last 48 hours in northern regions there has been up to 65 cm of fresh snow registered, in Lechquellen 40-50 cm, in Verwall 40 cm, and in the southern Rätikon-Silvretta region up to 35 cm. Amid winds from the northwest, the fresh snow was transported. In the new drifts are weak layers (often with graupel). Prior to the snowfall the slopes were bare up to intermediate altitudes. The fresh snow lies on bare ground or a moist snowpack and is well bonded. The snowpack is often wet down to the ground, and tends towards gliding downhill as a mass. Small glide-snow avalanches are being observed on slopes which before were bare of snow.

Weather

Cold April weather will continue, graupel and snow showers will pass through, focus in the barrier cloud regions between Arlberg and Bregenzerwald mountains. At 2000 m: -10 to -6 degrees. Light but gusty northerly winds.

Outlook

Until the end of the week, fresh snow will arrive in several bouts, focus in NW barrier cloud regions between Verwall, Arlberg and Bregenzerwald. The avalanche situation will remain tense.

Translated by Jeffrey McCabe, www.creativtrans.com

Avalanche problems



Danger ratings



Expositions

