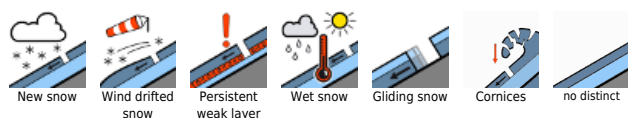


Fresh snow and fresh drifts at high altitude. Glide-snow avalanches continue

	Verwall, Rätikon Ost, Silvretta, Rätikon West, Lechtaler Alpen, Lechquellengebirge	
	Bregenzerwaldgebirge, Allgäuer Alpen	
	Voralpenbereich	

Avalanche problems



Danger ratings



Expositions



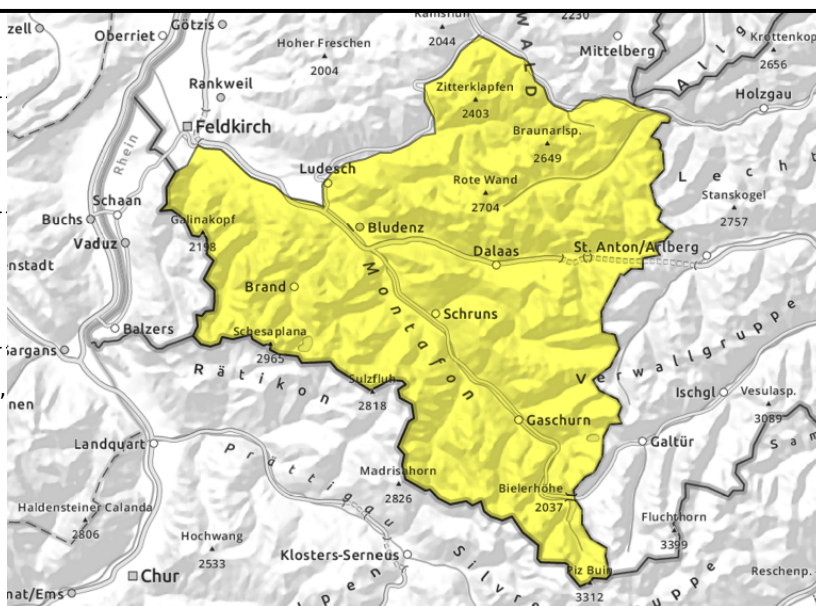
Verwall, Rätikon Ost, Silvretta, Rätikon West, Lechtaler Alpen, Lechquellengebirge



steep ridgeline terrain, behind discontinuities, in gullies and bowls



ongoing glide-snow avalanches, but they are slowly receding



Trigger-prone snowdrift accumulations due to fresh snow and wind

Due to fresh snow and brisk NW winds, trigger-prone snowdrift accumulations are being generated. Danger zones occur esp. in ridgeline steep terrain, behind discontinuities and in gullies and bowls, mostly small releases triggered by winter sports enthusiasts. The drifts should be assessed with caution in steep terrain. Danger zones will increase as the day progresses. Also, glide-snow avalanches can be large. Avoid zones below glide cracks.

Snowpack structure

Due to strong W/SW winds on Monday, small snowdrift accumulations were generated on Monday in high alpine regions. The fresh snow and brisk NW winds on Tuesday will generate more fresh snowdrifts, esp. at high altitudes, which will be trigger-prone. As temperatures drop the wet snow will stabilize, wet-snow avalanches will decrease, glide-snow avalanches persist.

Weather

Nocturnal hours: Dry and cloudy skies, but for a few showers, snowfall will get heavier in early morning. Tuesday daytime: Wintery! Snowfall level dropping to 1000 m. At 2000 m: -4 degrees. Moderate to brisk northwesterly winds.

Outlook

Due to snowfall, cold, brisk NW winds, wintery weather will continue on Wednesday. Danger of dry-snow avalanches will increase. Glide-snow avalanches remain a threat, but they will be less active.

Avalanche problems



Danger ratings



Expositions



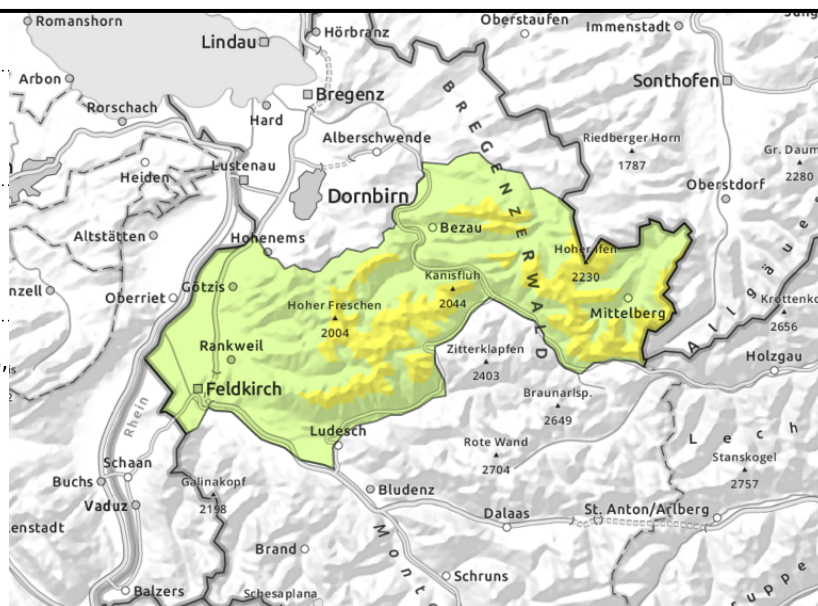
Bregenzerwaldgebirge, Allgäuer Alpen



steep ridgeline terrain, behind discontinuities, in gullies and bowls



ongoing glide-snow avalanches, but they are slowly receding



Trigger-prone snowdrift accumulations due to fresh snow and wind

Due to fresh snow and brisk NW winds, trigger-prone snowdrift accumulations are being generated. Danger zones occur esp. in ridgeline steep terrain, behind discontinuities and in gullies and bowls, mostly small releases triggered by winter sports enthusiasts. The drifts should be assessed with caution in steep terrain. Danger zones will increase as the day progresses. Also, glide-snow avalanches can be large. Avoid zones below glide cracks.

Snowpack structure

The fresh snow and brisk NW winds on Tuesday will generate more fresh snowdrifts, esp. at high altitudes, which will be trigger-prone. As temperatures drop the wet snow will stabilize, wet-snow avalanches will decrease, glide-snow avalanches persist.

Weather

Nocturnal hours: Dry and cloudy skies, but for a few showers, snowfall will get heavier in early morning. Tuesday daytime: Wintery! Snowfall level dropping to 1000 m. At 2000 m: -4 degrees. Moderate to brisk northwesterly winds.

Outlook

Due to snowfall, cold, brisk NW winds, wintery weather will continue on Wednesday. Danger of dry-snow avalanches will increase. Glide-snow avalanches remain a threat, but they will be less active.

Avalanche problems



Danger ratings



Expositions



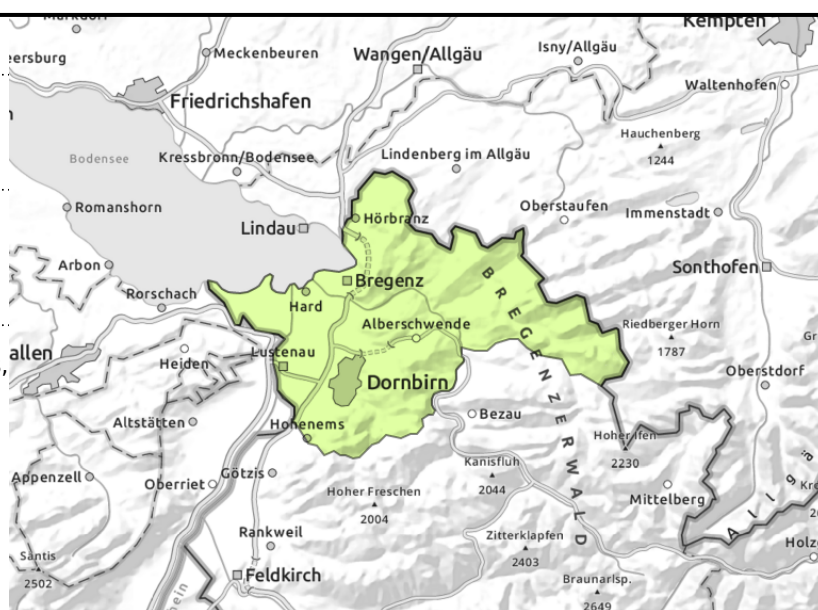
Voralpenbereich



steep ridgeline terrain, behind discontinuities, in gullies and bowls



ongoing glide-snow avalanches, but they are slowly receding



Main problem: freshly generated snowdrift accumulations

Due to fresh snow and brisk NW winds, trigger-prone snowdrift accumulations are being generated. Danger zones occur esp. in ridgeline steep terrain, behind discontinuities and in gullies and bowls, mostly small releases triggered by winter sports enthusiasts. The drifts should be assessed with caution in steep terrain. Danger zones will increase as the day progresses. Also, glide-snow avalanches can be large. Avoid zones below glide cracks.

Snowpack structure

The fresh snow and brisk NW winds on Tuesday will generate more fresh snowdrifts, esp. at high altitudes, which will be trigger-prone. As temperatures drop the wet snow will stabilize, wet-snow avalanches will decrease, glide-snow avalanches persist.

Weather

Nocturnal hours: Dry and cloudy skies, but for a few showers, snowfall will get heavier in early morning. Tuesday daytime: Wintery! Snowfall level dropping to 1000 m. At 2000 m: -4 degrees. Moderate to brisk northwesterly winds.

Outlook

Due to snowfall, cold, brisk NW winds, wintery weather will continue on Wednesday. Danger of dry-snow avalanches will increase. Glide-snow avalanches remain a threat, but they will be less active.

Translated by Jeffrey McCabe, www.creativtrans.com

Avalanche problems



Danger ratings



Expositions

