

## Heightened danger of wet-snow avalanches as of early morning due to rain and poor outgoing radiation

	Verwall, Rätikon Ost, Silvretta, Rätikon West, Lechtaler Alpen, Lechquellengebirge				
	Bregenzerwaldgebirge, Allgäuer Alpen				
	Voralpenbereich				

### Avalanche problems



### Danger ratings



### Expositions



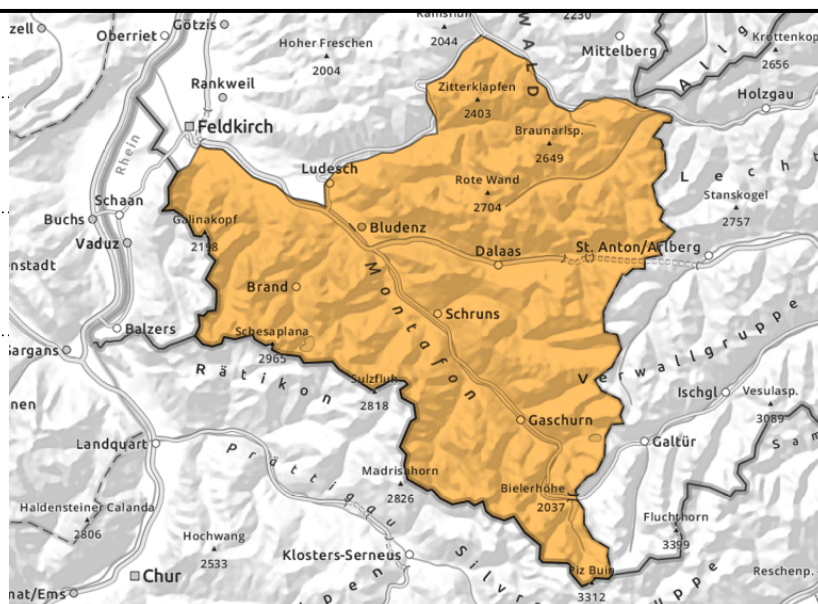
**Verwall, Rätikon Ost, Silvretta, Rätikon West, Lechtaler Alpen, Lechquellengebirge**



possible at any time



swift cycle of naturally triggered avalanche activity due to rain impact



**Rapid increase in likelihood of wet-snow avalanches triggering due to rain impact**

As a result of rainfall, likelihood of naturally triggered wet-snow/glide-snow avalanches swiftly increases. Wet-snow avalanches can be expected, and if they sweep along the set snowpack they can grow to large size. Glide-snow avalanches can be medium-to-large. Avoid zones below glide cracks, caution near cornices, which can break/collapse. Small snowdrift accumulations will be generated in high-alpine regions during the course of the day.

**Snowpack structure**

Reduced nocturnal outgoing longwave radiation. Due to rain impact the snowpack loses its firmness. The wet snowpack tends to glide away downhill. Isolated danger zones for dry-snow avalanches occur on shady steep slopes in high alpine regions.

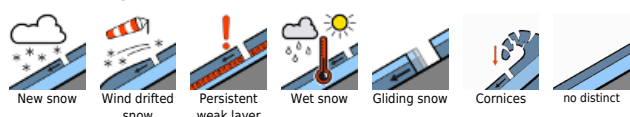
**Weather**

Nocturnal hours: Much reduced nocturnal radiation, heavy cloud cover. Monday daytime: A cold front will move in, bringing showers, heavy later in the day. The air is still warm, the snowfall level will drop only gradually to 2300 m. At 2000 m: at midday 9-3 degrees. Brisk to strong southwesterly winds.

**Outlook**

Starting on Tuesday it will be wintery, snowfall above 1000 m and brisk NW winds. Snowdrifts will again become a threat at high altitudes. Wet-snow avalanche activity will recede.

**Avalanche problems**



**Danger ratings**



**Expositions**



**Bregenzerwaldgebirge, Allgäuer Alpen**



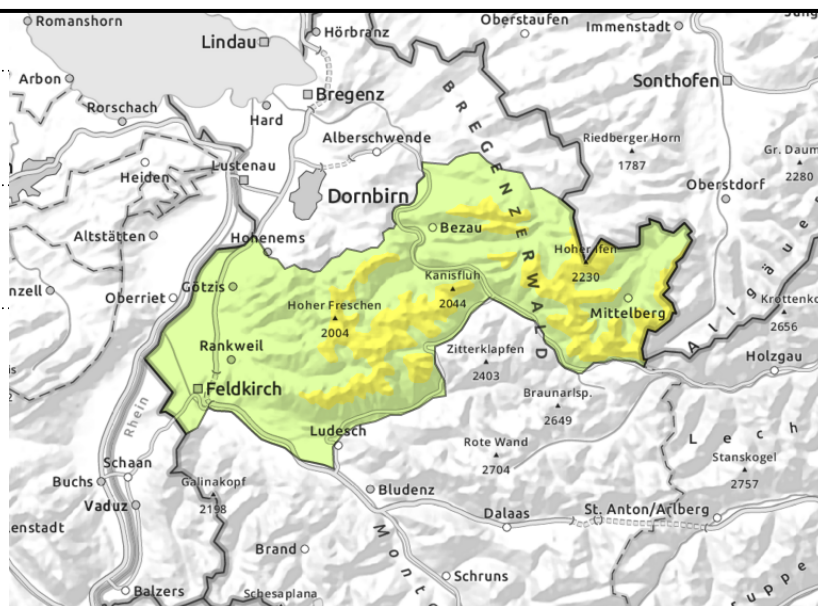
1600 m



possible at any time



swift cycle of naturally triggered avalanche activity due to rain impact



**Rapid increase in likelihood of wet-snow avalanches triggering due to rainfall**

As a result of rainfall, likelihood of naturally triggered wet-snow/glide-snow avalanches swiftly increases. Wet-snow avalanches can be expected, and if they sweep along the set snowpack they can grow to large size. Glide-snow avalanches can be medium-to-large. Avoid zones below glide cracks.

**Snowpack structure**

Reduced nocturnal outgoing longwave radiation. Due to rain impact the snowpack loses its firmness. The wet snowpack tends to glide away downhill.

**Weather**

Nocturnal hours: Much reduced nocturnal radiation, heavy cloud cover. Monday daytime: A cold front will move in, bringing showers, heavy later in the day. The air is still warm, the snowfall level will drop only gradually to 2300 m. At 2000 m: at midday 9-3 degrees. Brisk to strong southwesterly winds.

**Outlook**

Starting on Tuesday it will be wintery, snowfall above 1000 m and brisk NW winds. Snowdrifts will again become a threat at high altitudes. Wet-snow avalanche activity will recede.

**Avalanche problems**



**Danger ratings**



**Expositions**



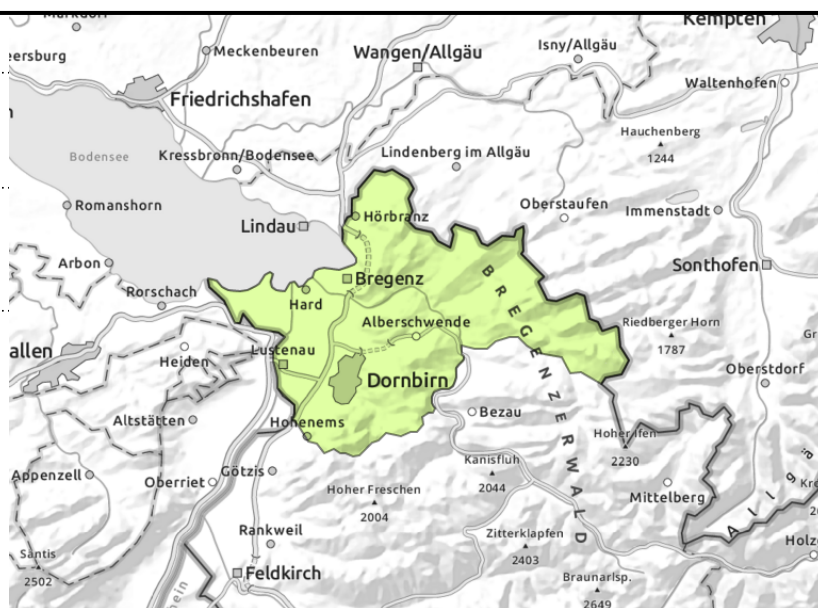
**Voralpenbereich**



possible at any time



swift cycle of naturally triggered avalanche activity due to rain impact



**Rapid increase in likelihood of wet-snow avalanches triggering due to rainfall**

Avalanche danger is low. Small-to-medium glide-snow avalanches and wet slides can release in starting zones which have not yet discharged.

**Snowpack structure**

The snowpack continues to lose its firmness, even more so due to rain impact. The slopes are becoming bare of snow, there is little on the ground. On north facing slopes the snowline lies at 1500 m.

**Weather**

Nocturnal hours: Much reduced nocturnal radiation, heavy cloud cover. Monday daytime: A cold front will move in, bringing showers, heavy later in the day. The air is still warm, the snowfall level will drop only gradually to 2300 m. At 2000 m: at midday 9-3 degrees. Brisk to strong southwesterly winds.

**Outlook**

Starting on Tuesday it will be wintery, snowfall above 1000 m and brisk NW winds. Snowdrifts will again become a threat at high altitudes. Wet-snow avalanche activity will recede.

Translated by Jeffrey McCabe, [www.creativtrans.com](http://www.creativtrans.com)

**Avalanche problems**



**Danger ratings**



**Expositions**

