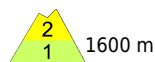
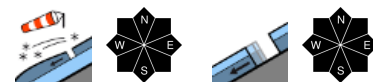


Fresh snow and snowdrifts often trigger-prone. Daytime cycle of naturally triggered avalanche activity.



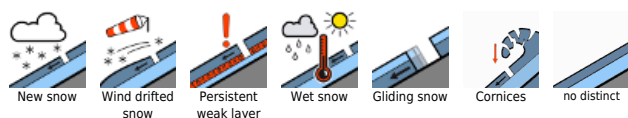
Verwall, Lechquellengebirge, Lechtaler Alpen, Allgäuer Alpen, Rätikon West, Rätikon Ost, Silvretta, Bregenzerwaldgebirge



Vorarlpenbereich



Avalanche problems



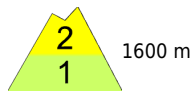
Danger ratings



Expositions



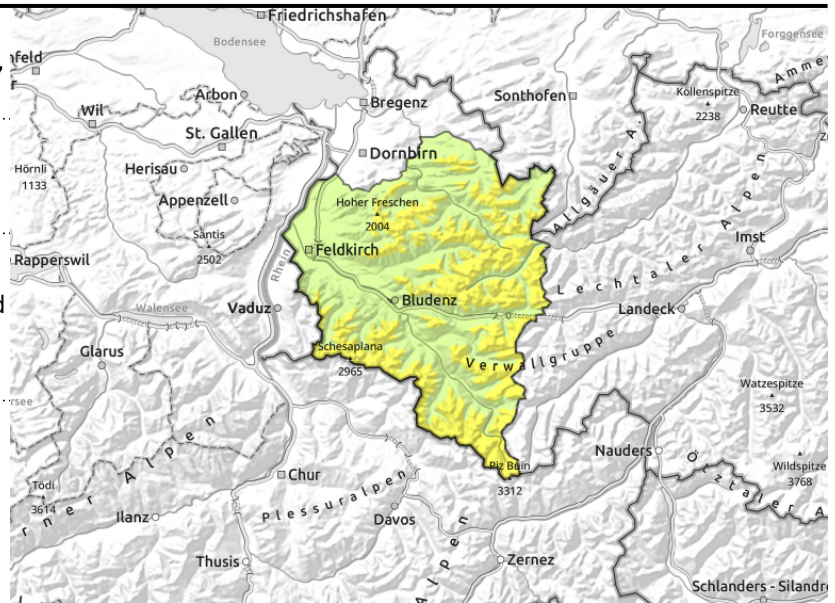
Verwall, Lechquellengebirge, Lechtaler Alpen, Allgäuer Alpen, Rätikon West, Rätikon Ost, Silvretta, Bregenzerwaldgebirge



>2000 m drifts in ridgeline terrain, wind-loaded gullies and bowls, fresh snow, often trigger-prone



continuing glide-snow avalanches on steep smooth slopes during course of day



Fresh snow/snowdrifts often prone to triggering. Daytime cycle of naturally triggered avalanche activity.

Avalanche danger is moderate. With ascending altitude and in high-alpine regions, fresh snowdrift accumulations and fresh snow are prone to triggering, esp. in ridgeline terrain and in wind-loaded gullies and bowls. Easily triggerable! Danger of wet-snow avalanches has receded as temperatures dropped, but will increase again, and more loose-snow avalanches can be expected to release from the fresh fallen snow. Glide-snow avalanches are still possible, esp. in starting zones where there is sufficient snow, releases can be large. Caution below glide cracks. Huge cornices still require caution.

Snowpack structure

Since Tuesday, 20-30 cm of fresh snow has been registered, locally more. Gusty winds have generated fresh snowdrift accumulations. The fresh snow and drifts are bonding adequately with the old snowpack surface. Beneath the fresh snow the snowpack below 2500 m is thoroughly wet. With solar radiation and rising temperatures, increasing loose-snow avalanches can be expected to release from the fresh snow.

Weather

Nocturnal hours: Above 1500 m, nighttime skies will be clear, good outgoing radiation will prevail in the latter part of the night. Thursday daytime: Sunny, clouds only towards evening. Significantly rising temperatures. At 2000 m: at midday +6 degrees. Light winds.

Outlook

Danger of dry-snow avalanches will recede with the sunny and mild weather. Following nights with clear skies, favorable conditions will prevail during the morning. As a result of solar radiation and daytime warming, danger of wet-snow avalanches will rise as the day unfolds.

Avalanche problems



Danger ratings



Expositions



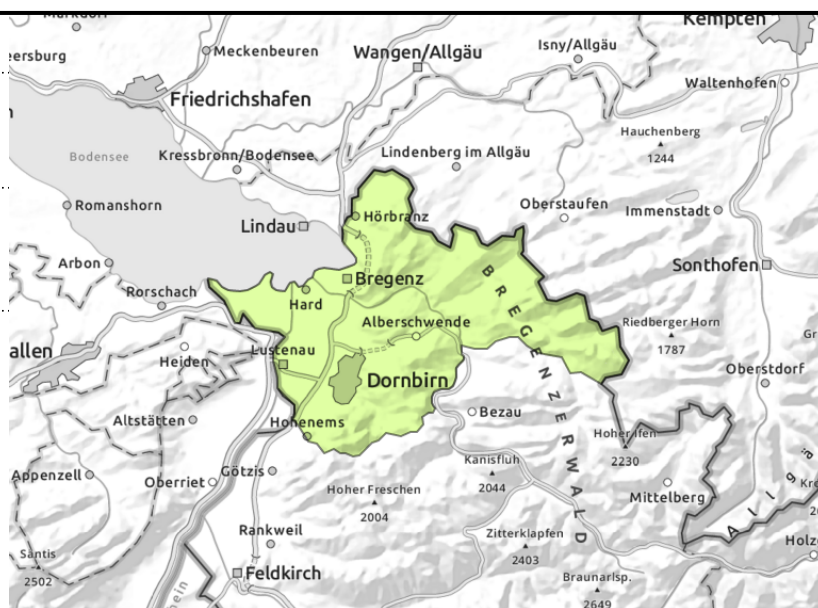
Voralpenbereich



steep smooth slopes



increasing loose-snow
 avalanches from fresh fallen
 snow



As day progresses, increasing small loose-snow avalanches from fresh fallen snow

Danger of wet-snow avalanches temporarily receding due to lower temperatures, but will ascend quickly as temperatures rise. Glide-snow avalanches are still possible, esp. in starting zones where there is sufficient snow, releases can be large. Caution below glide cracks. Huge cornices still require caution.

Snowpack structure

Since Tuesday, 10 cm of fresh snow has been registered, locally more. Gusty winds have generated fresh snowdrift accumulations. The fresh snow and drifts are bonding adequately with the old snowpack surface. Beneath the fresh snow the snowpack below 2500 m is thoroughly wet. With solar radiation and rising temperatures, increasing loose-snow avalanches can be expected to release from the fresh snow.

Weather

Nocturnal hours: Above 1500 m, nighttime skies will be clear, good outgoing radiation will prevail in the latter part of the night. Thursday daytime: Sunny, clouds only towards evening. Significantly rising temperatures. At 2000 m: at midday +6 degrees. Light winds.

Outlook

Danger of dry-snow avalanches will recede with the sunny and mild weather. Following nights with clear skies, favorable conditions will prevail during the morning. As a result of solar radiation and daytime warming, danger of wet-snow avalanches will rise as the day unfolds.

Translated by Jeffrey McCabe, www.creativtrans.com

Avalanche problems



Danger ratings



Expositions

