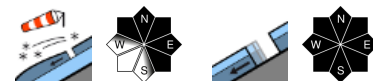


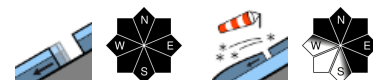
Slightly increasing avalanche danger at high altitudes due to fresh snow and snowdrifts. Glide-snow avalanches persist.



Verwall, Lechquellengebirge, Lechtaler Alpen, Allgäuer Alpen, Rätikon West, Rätikon Ost, Silvretta



Bregenzerwaldgebirge, Voralpenbereich



Avalanche problems



Danger ratings







Expositions

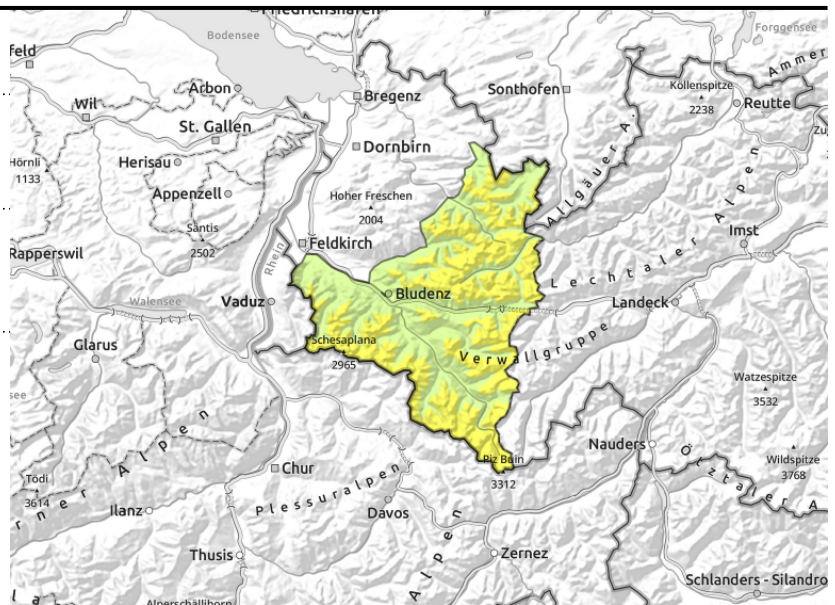


Verwall, Lechquellengebirge, Lechtaler Alpen, Allgäuer Alpen, Rätikon West, Rätikon Ost, Silvretta



  >2000 m in ridgeline terrain, wind-loaded gullies and bowls

  continuing glide-snow avalanches on steep smooth slopes



Slightly increasing avalanche danger at high altitudes. Glide-snow avalanches persist.

Avalanche danger is moderate. On Tuesday night and during the day on Wednesday: snowfall and wind will increase danger somewhat. With ascending altitude and in high-alpine regions, fresh snowdrift accumulations and fresh snow will be prone to triggering, esp. in ridgeline terrain and in wind-loaded gullies and bowls. Easily triggerable! Danger of wet-snow avalanches will recede as temperatures drop. Glide-snow avalanches are still possible, esp. in starting zones where there is sufficient snow, releases can be large. Caution below glide cracks. Huge cornices still require caution.

Snowpack structure

Below 2500 m the old snowpack is thoroughly moist and wet down to the ground. The surface freezes at night depending on cloud cover and thus, nocturnal outgoing radiation often forms a melt-freeze crust. Tonight at high altitudes, up to 10-30 cm of fresh snow is possible, locally more. Amid gusty winds, fresh snowdrifts will be generated, moderately bonding with the snowpack.

Weather

Nocturnal hours: gray rainy skies, intermittently heavy snowfall down to below 1000 m. Wednesday daytime: Heavily overcast skies, light snowfall at above 1000-1400 m, tapering off in the afternoon, reduced visibility. At 2000 m: from -5 to -2 degrees. Light to moderate easterly winds.

Outlook

Thursday will be sunny, much warmer during the course of the day. Winds will remain light. Due to solar radiation and higher temperatures, increasing loose-snow avalanches can be expected. Danger of dry-snow avalanches is not expected to change significantly. Glide-snow avalanches continue to be unpredictable.

Avalanche problems



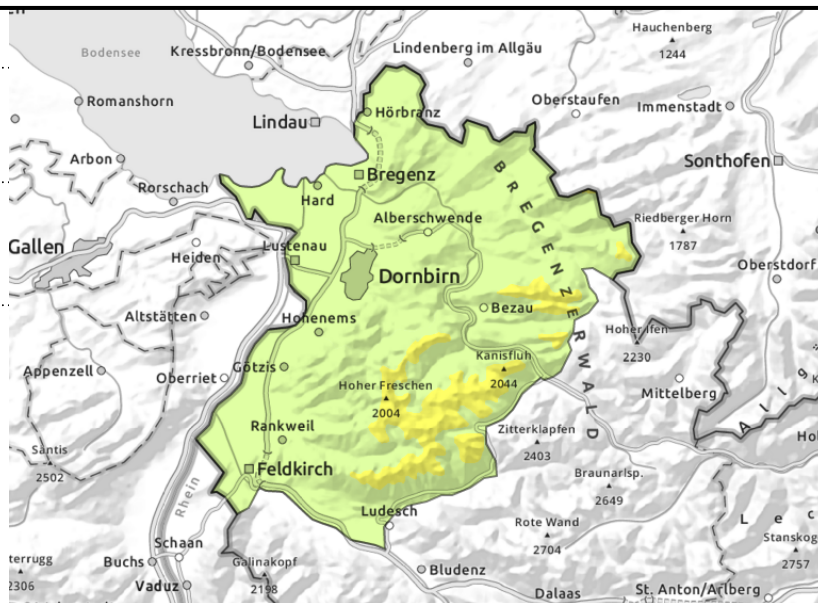
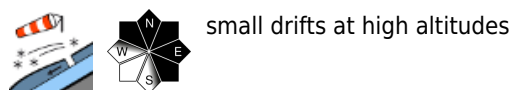
Danger ratings



Expositions



Bregenzerwaldgebirge, Voralpenbereich



Some fresh snow and drifts at high altitude. Glide-snow avalanches continue.

Moderate danger of small-to-medium glide-snow avalanches in steep smooth starting zones persists. Wet slides and avalanches only in isolated cases. Danger of dry-snow avalanches is low. Due to fresh snow and drifts, danger levels are not expected to change immediately. Isolated avalanche triggerings in extremely steep terrain are possible. Beware the danger of taking a fall.

Snowpack structure

The old snowpack is thoroughly moist and wet down to the ground. The surface freezes at night depending on cloud cover and thus, nocturnal outgoing radiation often forms a melt-freeze crust. Tonight at high altitudes, up to 10-30 cm of fresh snow is possible, locally more. Amid gusty winds, fresh snowdrifts will be generated, moderately bonding with the snowpack. At low altitudes the fresh snow will fall on bare ground.

Weather

Nocturnal hours: gray rainy skies, intermittently heavy snowfall down to below 1000 m. Wednesday daytime: Heavily overcast skies, light snowfall at above 1000-1400 m, tapering off in the afternoon, reduced visibility. At 2000 m: from -5 to -2 degrees. Light to moderate easterly winds.

Outlook

Thursday will be sunny, much warmer during the course of the day. Winds will remain light. Due to solar radiation and higher temperatures, increasing loose-snow avalanches can be expected. Danger of dry-snow avalanches is not expected to change significantly. Glide-snow avalanches continue to be unpredictable.

Translated by Jeffrey McCabe, www.creativtrans.com

Avalanche problems



Danger ratings



Expositions

