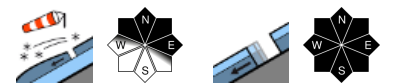


## Mostly moderate avalanche danger: high-altitude snowdrifts and continuing glide-snow avalanches



Verwall, Lechquellengebirge, Lechtaler Alpen, Allgäuer Alpen, Rätikon West, Rätikon Ost, Silvretta



Voralpenbereich, Bregenzerwaldgebirge



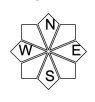
### Avalanche problems



### Danger ratings







### Expositions

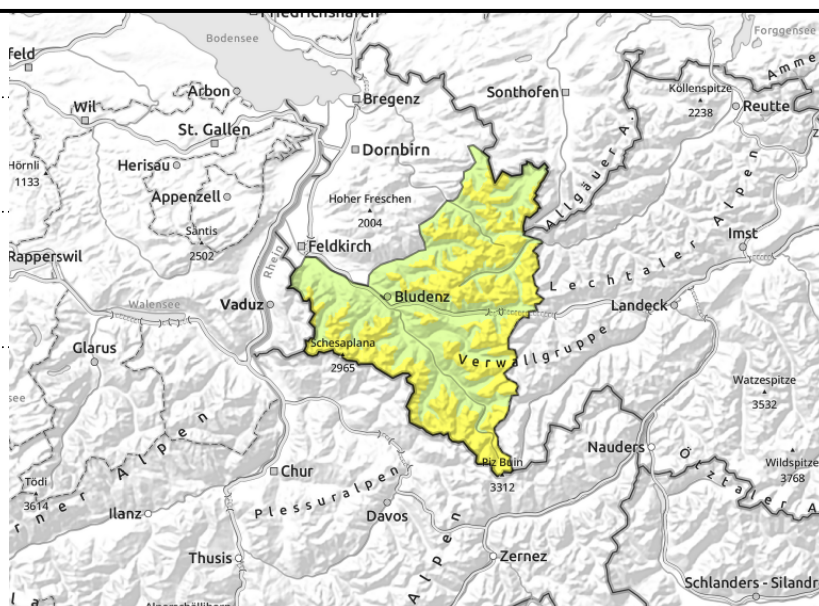


**Verwall, Lechquellengebirge, Lechtaler Alpen, Allgäuer Alpen, Rätikon West, Rätikon Ost, Silvretta**



  >2200 m near ridges, passes, behind discontinuities, wind-loaded gullies, bowls

  <2600 m glide-snow avalanches on steep smooth slopes



**Beware high-altitude snowdrifts, glide-snow avalanches persist**

With ascending altitude, fresh snowdrift accumulations merit caution, they are now blanketed by fresh snow and hard to recognize. Small-to-medium slab avalanches can be triggered by 1 person. Danger zones occur also distant from ridges, behind discontinuities and in wind-loaded gullies and bowls; they increase in both size and frequency with ascending altitude. In high alpine regions the danger zones are more frequent. Backcountry tours require a cautious route selection. Glide-snow avalanches continue to be possible, and can grow to large size where snowfall is heavy. Avoid zones below glide cracks.

**Snowpack structure**

The fresh fallen snow and snowdrifts lie deposited atop an irregular snowpack, mostly hardened surfaces, gradually bonding better with the old snowpack. Fresh and older snowdrift masses often lie deposited atop soft layers, esp. on shady slopes, and are trigger-prone. Below 2200 m the old snowpack is thoroughly moist, wet down to the ground, this reinforces gliding over smooth ground. Very little snow on the ground below 1500 m.

**Weather**

Nocturnal hours: heavy cloud cover, a few rain showers. Thursday daytime: residual clouds and then intermittent sunshine, afternoon more clouds will move in, initially snow showers in late afternoon from the north, above 2000 m. At 2000 m: +1-5 degrees. Moderate to brisk SW winds.

**Outlook**

Friday will be quite sunny despite cirrus clouds, and very mild, zero-degree level rising to above 3000 m, and thus, rise in danger of wet-snow avalanches during the day to a noticeable degree. Glide-snow avalanches will again be more frequently possible.

**Avalanche problems**



**Danger ratings**





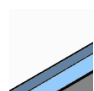
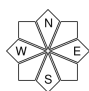
**Expositions**

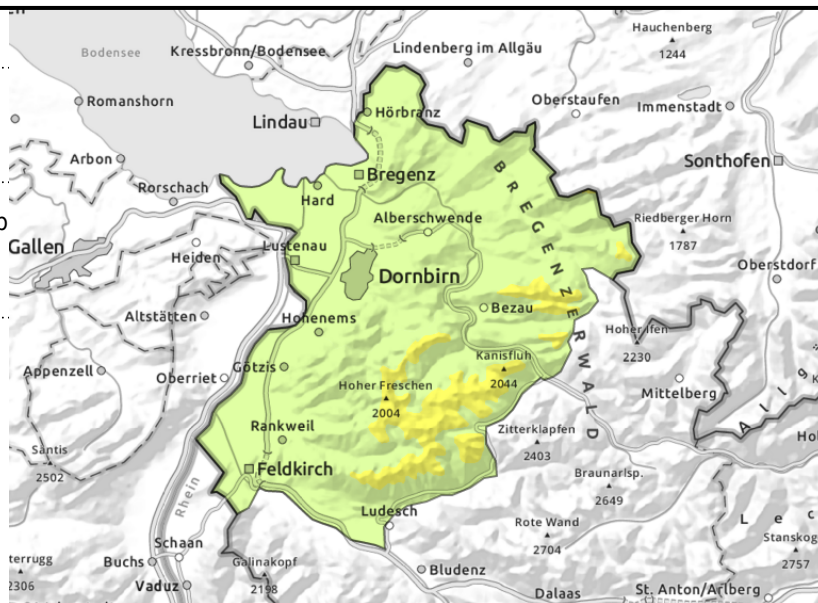


**Voralpenbereich, Bregenzerwaldgebirge**



  glide-snow avalanches on steep smooth slopes, wet slides and avalanches

  no striking avalanche problem



**Predominantly moderate danger of glide-snow avalanches**

Avalanche danger is moderate, small loose-snow slides are possible in steep terrain, wet slides and avalanches are possible in steep terrain. Also small isolated medium glide-snow avalanches are still possible. Avoid zones below glide cracks. Otherwise avalanche danger is low. Isolated triggerings are possible in extremely steep terrain. The danger of falling outweighs that of snow masses.

**Snowpack structure**

The recent fresh fallen snow lies deposited atop a moist-to-wet snowpack, will bonded with it. No prevalent avalanche problem threatens. Sahara dust is embedded in the snowpack. Below 1500 m, very little snow.

**Weather**

Nocturnal hours: heavy cloud cover, a few rain showers. Thursday daytime: residual clouds and then intermittent sunshine, afternoon more clouds will move in, initially snow showers in late afternoon from the north, above 2000 m. At 2000 m: +1-5 degrees. Moderate to brisk SW winds.

**Outlook**

Friday will be quite sunny despite cirrus clouds, and very mild, zero-degree level rising to above 3000 m, and thus, rise in danger of wet-snow avalanches during the day to a noticeable degree. Glide-snow avalanches will again be more frequently possible.

Translated by Jeffrey McCabe, [www.creativtrans.com](http://www.creativtrans.com)

**Avalanche problems**



**Danger ratings**



**Expositions**

