

Mostly moderate avalanche danger: high-altitude snowdrifts and continuing glide-snow avalanches

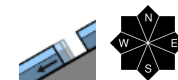


1600 m

Verwall, Lechquellengebirge, Lechtaler Alpen, Allgäuer Alpen, Bregenzerwaldgebirge, Rätikon West, Rätikon Ost, Silvretta



Voralpenbereich



Avalanche problems



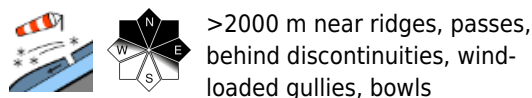
Danger ratings



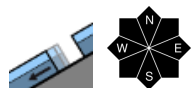
Expositions



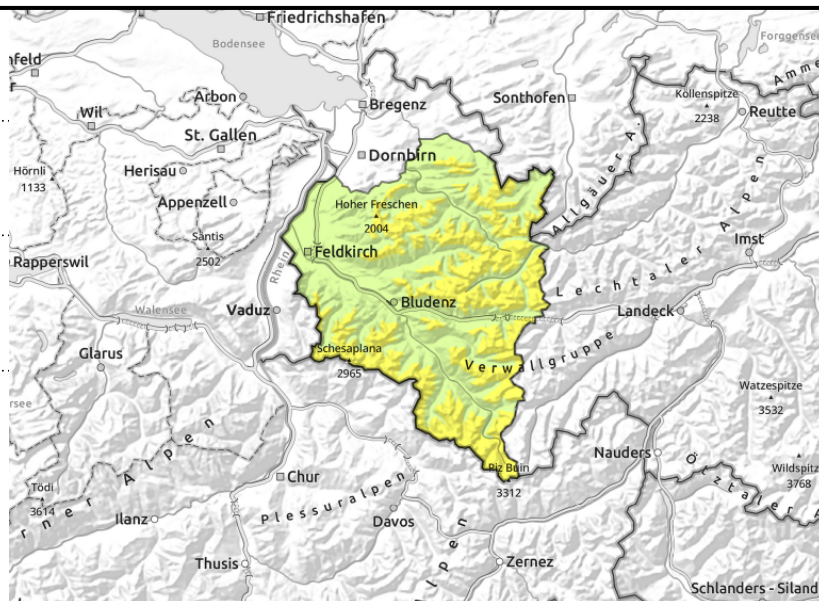
Verwall, Lechquellengebirge, Lechtaler Alpen, Allgäuer Alpen, Bregenzerwaldgebirge, Rätikon West, Rätikon Ost, Silvretta



>2000 m near ridges, passes, behind discontinuities, wind-loaded gullies, bowls



<2600 m glide-snow avalanches on steep smooth slopes



Beware high-altitude snowdrifts, glide-snow avalanches persist

With ascending altitude, fresh snowdrift accumulations merit caution, they are now blanketed by fresh snow and hard to recognize. Small-to-medium slab avalanches can be triggered by 1 person. Danger zones occur also distant from ridges, behind discontinuities and in wind-loaded gullies and bowls; they increase in both size and frequency with ascending altitude. In high alpine regions the danger zones are more frequent. Backcountry tours require a cautious route selection. Glide-snow avalanches continue to be possible, and can grow to large size where snowfall is heavy. Avoid zones below glide cracks.

Snowpack structure

The fresh fallen snow from foehn winds lies deposited atop an irregular snowpack, mostly hardened surfaces. Fresh and older snowdrift masses often lie deposited atop soft layers, esp. on shady slopes, and are trigger-prone. Below 2000 m the old snowpack is thoroughly moist, wet down to the ground, this reinforces gliding over smooth ground. Very little snow on the ground below 1500 m.

Weather

Nocturnal hours: dry and scattered clouds. In early morning, compact cloud cover will move in from the west. Wednesday daytime: compact clouds above summit level, some precipitation, snow above 1600 m. Sunshine likeliest in afternoon. At 2000 m: +1 degree. Moderate to brisk W/SW winds.

Outlook

Thursday will be variable, some sunshine, some clouds as of midday, showers and snow later on (snowfall level 1800 m). Avalanche danger levels are not expected to change significantly.

Avalanche problems



Danger ratings



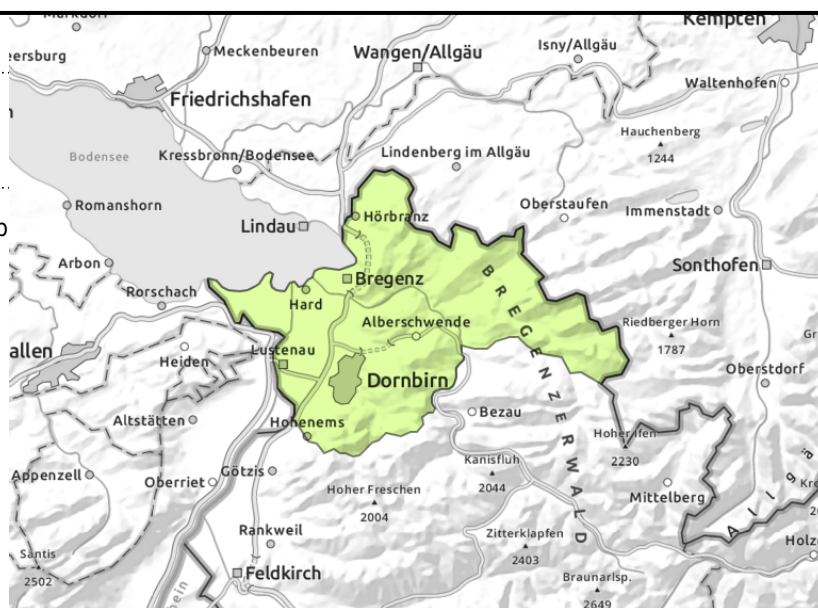
Expositions



Voralpenbereich



glide-snow avalanches on steep smooth slopes



Predominantly low danger of avalanches

Avalanche danger is low, small loose-snow slides are possible in steep terrain. Also small isolated medium glide-snow avalanches are still possible. Avoid zones below glide cracks.

Snowpack structure

The recent fresh fallen snow lies deposited atop a moist-to-wet snowpack with Sahara dust embedded in it, reinforcing gliding snow activity. Below 1500 m, very little snow.

Weather

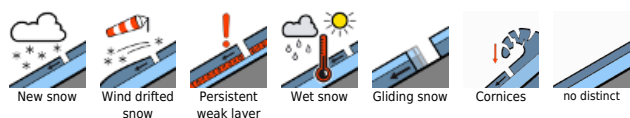
Nocturnal hours: dry and scattered clouds. In early morning, compact cloud cover will move in from the west. Wednesday daytime: compact clouds above summit level, some precipitation, snow above 1600 m. Sunshine likeliest in afternoon. At 2000 m: +1 degree. Moderate to brisk W/SW winds.

Outlook

Thursday will be variable, some sunshine, some clouds as of midday, showers and snow later on (snowfall level 1800 m). Avalanche danger levels are not expected to change significantly.

Translated by Jeffrey McCabe, www.creativtrans.com

Avalanche problems



Danger ratings



Expositions

