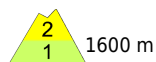


Foehn ending, cold front passing through. Fresh snow + wind: new drifts at high altitudes.



Silvretta, Rätikon Ost, Rätikon West, Verwall, Lechquellengebirge, Lechtaler Alpen, Allgäuer Alpen, Bregenzerwaldgebirge



Voralpenbereich



Avalanche problems



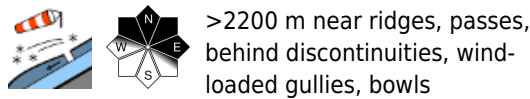
Danger ratings



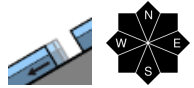
Expositions



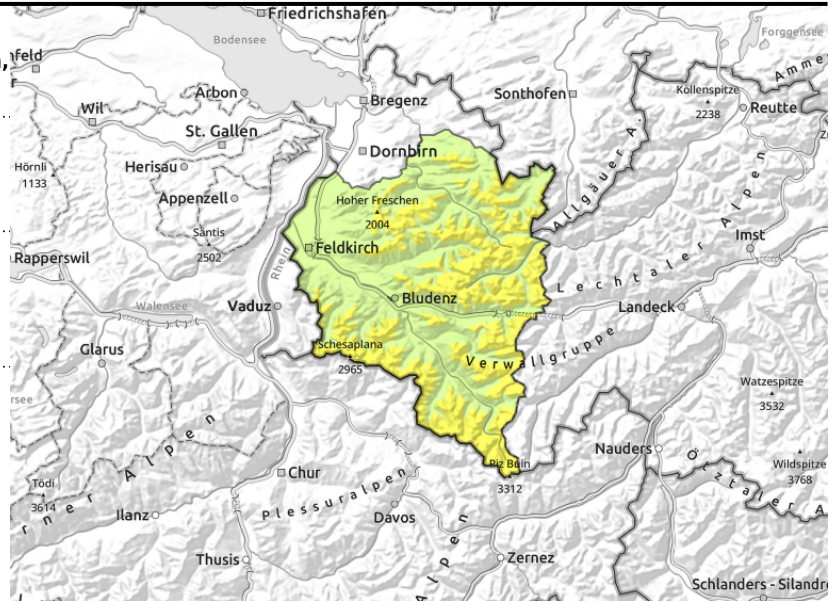
Silvretta, Rätikon Ost, Rätikon West, Verwall, Lechquellengebirge, Lechtaler Alpen, Allgäuer Alpen, Bregenzerwaldgebirge



>2200 m near ridges, passes, behind discontinuities, wind-loaded gullies, bowls



<2600 m glide-snow avalanches on steep smooth slopes due to rain



Beware fresh snowdrifts, wet and gliding snow

Beware fresh and older snowdrift accumulations at high altitudes. Due to winds at storm strength, further snowdrifts will be generated on Monday morning. Medium sized avalanches can be triggered by 1 person. Danger zones occur also distant from ridges, behind discontinuities and in wind-loaded gullies and bowls; they increase in both size and frequency with ascending altitude. In high alpine regions the danger zones are more frequent. Backcountry tours require a cautious route selection. Glide-snow avalanches continue to be possible, and can grow to large size where snowfall is heavy. Avoid zones below glide cracks.

Snowpack structure

Foehn winds have distributed the snow very irregularly, it is often hardened. Sahara dust has painted the surface, which accelerates the melting process. Fresh and older snowdrift masses often lie deposited atop soft layers, esp. on shady slopes, and are trigger-prone. Below 2000 m the old snowpack is thoroughly moist, wet down to the ground, this reinforces gliding over smooth ground. Very little snow on the ground below 1500 m.

Weather

Nocturnal hours: Stormy southerly winds widespread, often heavily overcast. Monday daytime: Southerly winds rapidly slackening off, shifting to westerly. Heavy showers will spread throughout the land, temperatures drop, snowfall level to below 1500 m. Precipitation will taper off in the afternoon. At 2000 m: dropping to -2 degrees. Swiftly slackening off winds, shifting to westerly.

Outlook

On Tuesday, highly variable and cool weather, brisk winds, tendency towards showers in afternoon. Avalanche danger levels are not expected to change significantly.

Avalanche problems



Danger ratings



Expositions



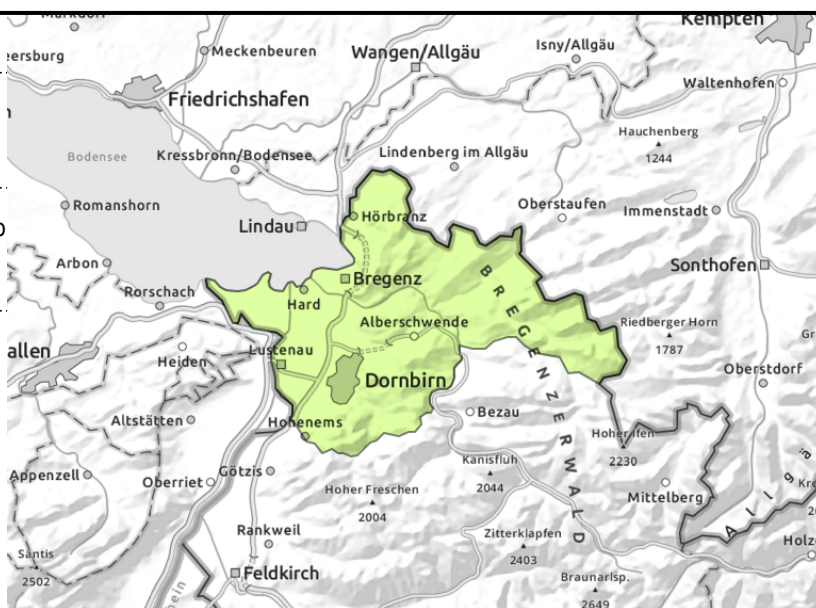
Voralpenbereich



glide-snow avalanches on steep smooth slopes



as rain sets in



Beware wet and gliding snow

Due to rainfall, moist and wet-snow avalanches are possible, mostly small releases. Glide-snow avalanches still possible, can reach medium size. Avoid zones below glide cracks.

Snowpack structure

The fresh snow is being deposited atop a moist-to-wet snowpack surface which has been painted by Sahara dust, which accelerates the melting process. Below 2000 m the old snowpack is thoroughly moist, wet down to the ground, this reinforces gliding over smooth ground. Very little snow on the ground below 1500 m.

Weather

Nocturnal hours: Stormy southerly winds widespread, often heavily overcast. Monday daytime: Southerly winds rapidly slackening off, shifting to westerly. Heavy showers will spread throughout the land, temperatures drop, snowfall level to below 1500 m. Precipitation will taper off in the afternoon. At 2000 m: dropping to -2 degrees. Swiftly slackening off winds, shifting to westerly.

Outlook

On Tuesday, highly variable and cool weather, brisk winds, tendency towards showers in afternoon. Avalanche danger levels are not expected to change significantly.

Translated by Jeffrey McCabe, www.creativtrans.com

Avalanche problems



Danger ratings



Expositions

