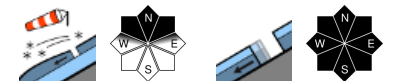


Ongoing storm-strength winds, gusts reaching gale strength



1600 m

Silvretta, Rätikon Ost, Rätikon West, Verwall, Lechquellengebirge, Lechtaler Alpen, Allgäuer Alpen, Bregenzerwaldgebirge



Voralpenbereich



Avalanche problems



Danger ratings



Expositions



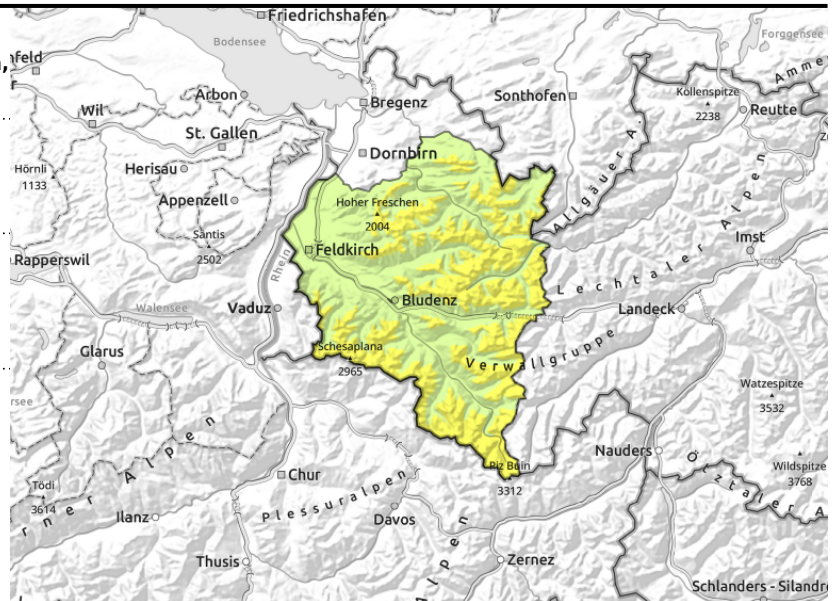
Silvretta, Rätikon Ost, Rätikon West, Verwall, Lechquellengebirge, Lechtaler Alpen, Allgäuer Alpen, Bregenzerwaldgebirge



>2200 m near ridges, passes, behind discontinuities, wind-loaded gullies, bowls



<2600 m glide-snow avalanches on steep smooth slopes due to warmth/rain



Beware fresh snowdrifts, wet and gliding snow

Beware fresh and older snowdrift accumulations at high altitudes. Due to gusts reaching gale strength, further snowdrifts are being generated. Danger zones occur also distant from ridges, behind discontinuities and in wind-loaded gullies and bowls; they increase in both size and frequency with ascending altitude. Medium sized avalanches can be triggered by 1 person. In high alpine regions the danger zones are more frequent. Backcountry tours require a cautious route selection. Due to warmth and radiation, slides and loose-snow avalanches are possible, esp. on sunny slopes. Below 2600 m, glide-snow avalanches continue to be possible, and can grow to large size where snowfall is heavy. Avoid zones below glide cracks.

Snowpack structure

Snow is distributed irregularly due to foehn storms, is often hard. Sahara dust has painted the surface, which accelerates the melting process. Fresh and older snowdrift masses often lie deposited atop soft layers, esp. on shady slopes, and are trigger-prone. Warmth will further weaken the snowpack, esp. in wind-protected zones. Below 2000 m the old snowpack is thoroughly moist, wet down to the ground, this reinforces gliding over smooth ground. Very little snow on the ground below 1500 m.

Weather

Nocturnal hours: Short rain showers will pass through during the early part of the night. Dry later on.

Sunday daytime: Very stormy conditions, the southerly winds can reach gale strength. Alternating clouds and sunshine. At 2000 m: 1-4 degrees. Strong to gale strength southerly winds.

Outlook

On Monday the foehn will terminate, a cold front move in, heavy showers will make temperatures drop, snowfall level just below 1500 m. Avalanche danger levels could increase on Monday. The wet-snow problem will recede.

Avalanche problems



Danger ratings



Expositions



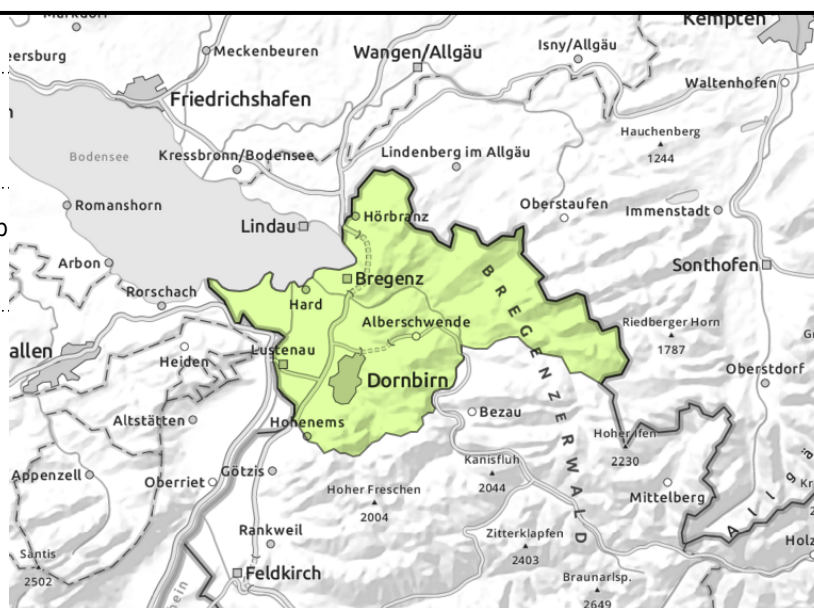
Voralpenbereich



glide-snow avalanches on steep smooth slopes



as warmth increases, or rain sets in



Beware wet and gliding snow

Small moist loose-snow avalanches are possible in all aspects as the day unfolds. Below 2600 m, glide-snow avalanches continue to be possible, gliding snow is increasing, releases medium-sized. Avoid zones below glide cracks.

Snowpack structure

The snow surface has been painted by Sahara dust, which accelerates the melting process. Winds are rapidly softening the snowpack. Below 2000 m the old snowpack is thoroughly moist, wet down to the ground, this reinforces gliding over smooth ground. Very little snow on the ground below 1500 m.

Weather

Nocturnal hours: Short rain showers will pass through during the early part of the night. Dry later on.

Sunday daytime: Very stormy conditions, the southerly winds can reach gale strength. Alternating clouds and sunshine. At 2000 m: 1-4 degrees. Strong to gale strength southerly winds.

Outlook

On Monday the foehn will terminate, a cold front move in, heavy showers will make temperatures drop, snowfall level just below 1500 m. Avalanche danger levels could increase on Monday. The wet-snow problem will recede.

Translated by Jeffrey McCabe, www.creativtrans.com

Avalanche problems



Danger ratings



Expositions

