

## Snowdrifts at high altitudes remain prone to triggering in places



1600 m

Silvretta, Rätikon Ost, Rätikon West, Verwall, Lechquellengebirge, Lechtaler Alpen, Allgäuer Alpen



Voralpenbereich, Bregenzerwaldgebirge



### Avalanche problems



### Danger ratings





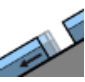

### Expositions

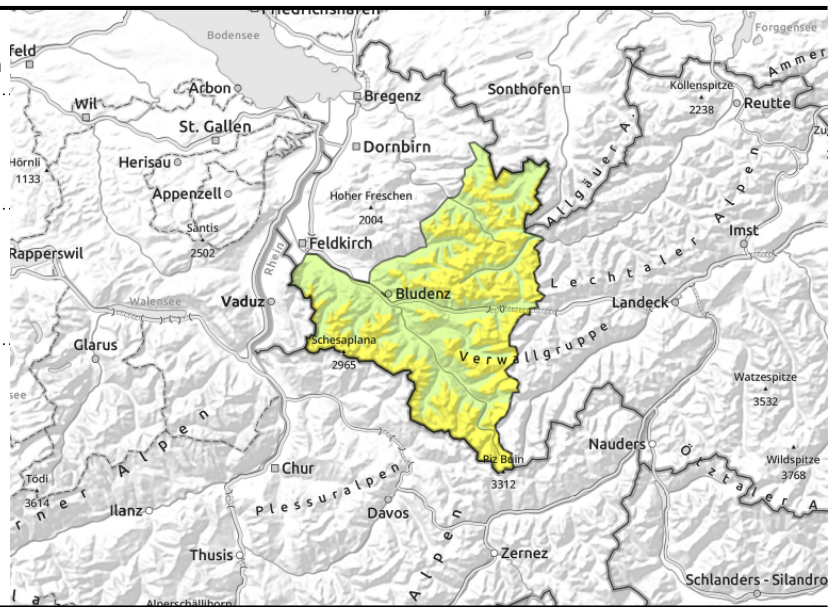


**Silvretta, Rätikon Ost, Rätikon West, Verwall, Lechquellengebirge, Lechtaler Alpen, Allgäuer Alpen**



  >2000 m near ridges, passes, behind discontinuities, wind-loaded gullies, bowls

  <2600 m glide-snow avalanches on steep smooth slopes



**Fresh and older snowdrifts remain trigger-prone**

Pay close heed to freshly generated snowdrift accumulations at high altitudes, they are blanketed by fresh snow, hard to recognize, often trigger-prone, can be released by 1 person. Danger zones occur in ridgeline terrain, behind discontinuities and in wind-loaded gullies and bowls; they increase in both size and frequency with ascending altitude. In high alpine regions the danger zones are more frequent. Backcountry tours require a cautious route selection. Due to warmth and radiation, slides and loose-snow avalanches are possible, esp. on sunny slopes. Below 2600 m, glide-snow avalanches continue to be possible, and can grow to large size where snowfall is heavy.

**Snowpack structure**

Fresh snow is expected (10-15 cm) which will blanket the latest snowdrift accumulations. With ascending altitude, esp. on high shady slopes, often poorly bonded with the snowpack and the covered layers of graupel. New snowdrift accumulations will be generated. Below 2000 m the old snowpack is thoroughly moist, wet down to the ground, this reinforces gliding over smooth ground. Very little snow on the ground below 1500 m.

**Weather**

Nocturnal hours: Gray and rainy skies, snowfall above 1000 m. After midnight, dry, clouds dispersing.  
Thursday daytime: Scattered clouds in the morning, snow showers and diffuse light in the afternoon, 10-15 cm of fresh snow anticipated. At 2000 m: 0 to -4 degrees. Brisk to strong southerly SW winds.

**Outlook**

Good Friday will have only scattered clouds due to storm-strength foehn winds, and be quite mild. Danger of dry-snow avalanches will not change. Gliding snow activity will persist. Increasingly frequent loose-snow avalanches possible due to daytime warming.

**Avalanche problems**



**Danger ratings**



**Expositions**



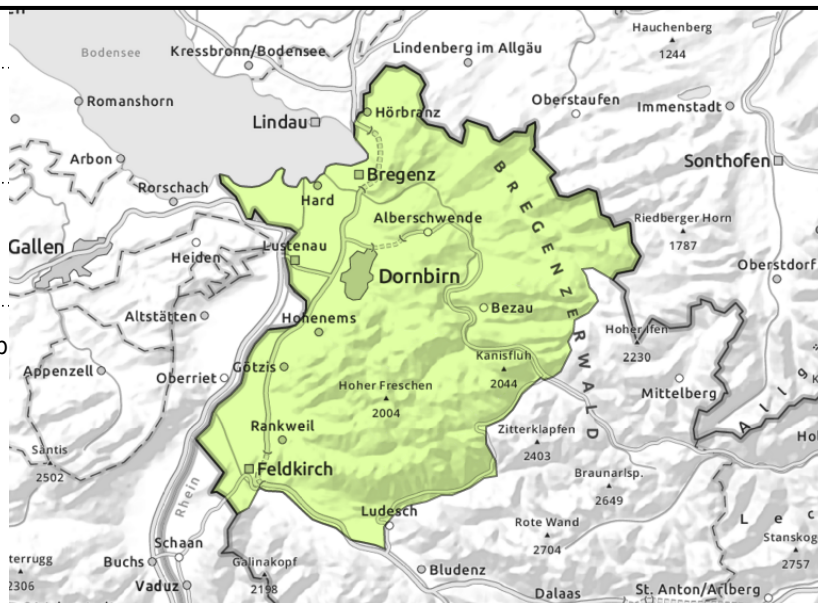
**Voralpenbereich, Bregenzerwaldgebirge**



>1800 m: in ridgeline terrain, wind-loaded gullies and bowls



glide-snow avalanches on steep smooth slopes



**Snowdrift accumulations at high altitudes often prone to triggering**

Pay close heed to freshly generated snowdrift accumulations at high altitudes, they are blanketed by fresh snow, hard to recognize, often trigger-prone, can be released by 1 person. Danger zones occur in ridgeline terrain, behind discontinuities and in wind-loaded gullies and bowls; they increase in both size and frequency with ascending altitude. Due to warmth and radiation, slides and loose-snow avalanches are possible, esp. on sunny slopes. Below 2600 m, glide-snow avalanches continue to be possible, and can grow to large size where snowfall is heavy.

**Snowpack structure**

Only a bit of fresh snow, covering the latest snowdrift accumulations. With ascending altitude, esp. on high shady slopes, often poorly bonded with the snowpack and the covered layers of graupel. New snowdrift accumulations will be generated. Below 2000 m the old snowpack is thoroughly moist, wet down to the ground, this reinforces gliding over smooth ground. Very little snow on the ground below 1500 m.

**Weather**

Nocturnal hours: Gray and rainy skies, snowfall above 1000 m. After midnight, dry, clouds dispersing.  
Thursday daytime: Scattered clouds in the morning, snow showers and diffuse light in the afternoon, 10-15 cm of fresh snow anticipated. At 2000 m: 0 to -4 degrees. Brisk to strong southerly SW winds.

**Outlook**

Good Friday will have only scattered clouds due to storm-strength foehn winds, and be quite mild. Danger of dry-snow avalanches will not change. Gliding snow activity will persist. Increasingly frequent loose-snow avalanches possible due to daytime warming.

Translated by Jeffrey McCabe, [www.creativtrans.com](http://www.creativtrans.com)

**Avalanche problems**



**Danger ratings**



**Expositions**

