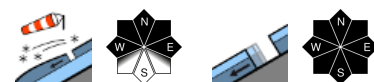


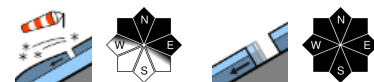
## UPDATE: foehn-generated snowdrifts. Considerable danger regionally.



2000 m  
 Lechquellengebirge, Verwall, Lechtaler Alpen, Silvretta, Rätikon Ost, Rätikon West



1600 m  
 Voralpenbereich, Bregenzerwaldgebirge, Allgäuer Alpen



### Avalanche problems



### Danger ratings



### Expositions

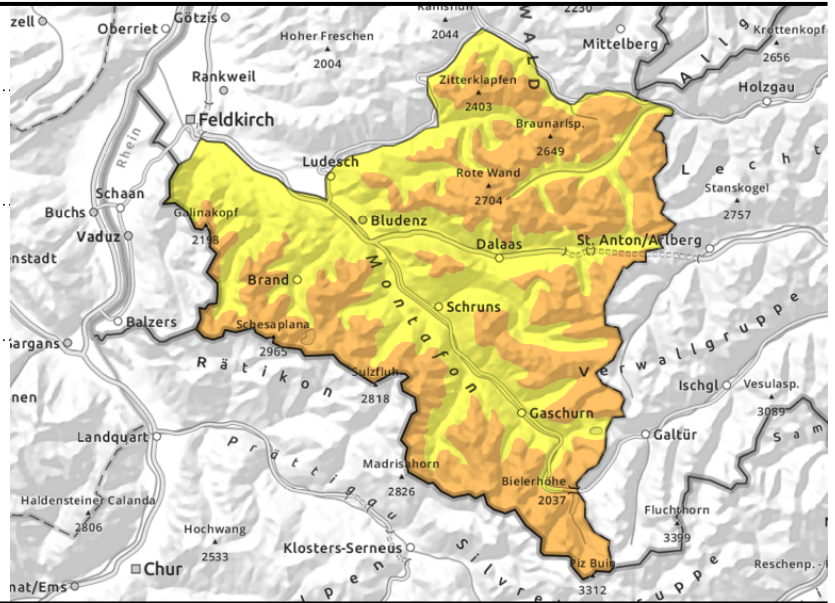


**Lechquellengebirge, Verwall, Lechtaler Alpen, Silvretta, Rätikon Ost, Rätikon West**



>2200 m near ridges, passes, behind discontinuities, wind-loaded gullies, bowls

<2600 m glide-snow avalanches on steep smooth slopes; slides and loose-snow avalanches



**Trigger-prone snowdrifts, considerable avalanche danger**

Freshly generated snowdrift accumulations at high altitudes are prone to triggering, and are triggerable by 1 person. Danger zones will increase in both size and frequency as the day unfolds. In addition, on steep shady slopes in high alpine regions the interim layers inside the old snowpack are often trigger-prone. Medium-sized slab avalanches can be triggered by large additional loading there. In high alpine regions the danger zones are more frequent. Backcountry tours require a cautious route selection. Due to warmth and radiation, slides and loose-snow avalanches are possible, esp. on sunny slopes. Below 2600 m, glide-snow avalanches continue to be possible, and can grow to large size where snowfall is heavy.

**Snowpack structure**

The fresh fallen snow from the weekend was transported by intermittently strong and gusty southerly winds, fresh snowdrift accumulations were generated, lying deposited soft loose layers or atop blanketed graupel. Strong southerly winds are still transporting fresh snow and generating fresh snowdrift accumulations in the typical foehn lanes at high altitudes. The fresh snow and drifts often lie deposited atop melt-freeze encrusted layers, bonding is often poor. Below 2200 m the old snowpack is thoroughly moist, wet down to the ground, this reinforces gliding over smooth ground.

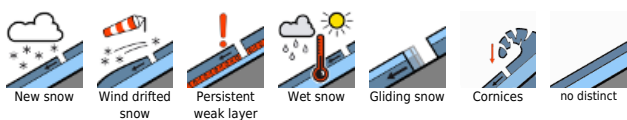
**Weather**

Nocturnal hours: foehn conditions by full moon, clouds dispersing somewhat. Tuesday daytime: Cirrus clouds will hamper the sun somewhat, light can be diffuse. In Rätikon and Silvretta, many peaks in fog. At 2000 m: -5 to 0 degrees. Brisk southerly winds, often stormy in foehn lanes.

**Outlook**

On Wednesday, skies heavily overcast, some precipitation, snowfall level at 1500 m. Danger of dry-snow avalanches will recede somewhat. Gliding snow activity will persist.

**Avalanche problems**



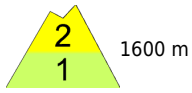
**Danger ratings**



**Expositions**

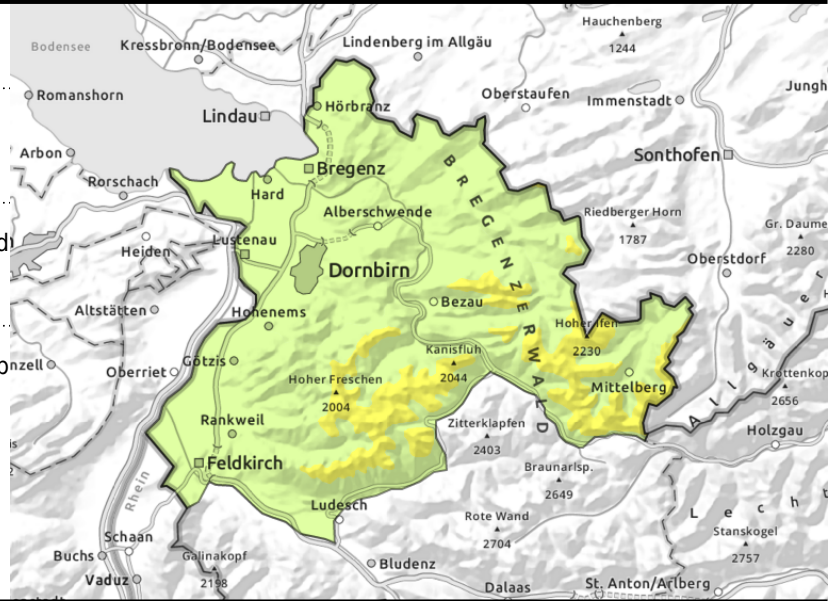


**Voralpenbereich, Bregenzerwaldgebirge, Allgäuer Alpen**



in ridgeline terrain, wind-loaded gullies and bowls

glide-snow avalanches on steep smooth slopes; slides and loose-snow avalanches



**Snowdrift accumulations prone to triggering at high altitudes**

At high altitudes the snowdrifts require caution, area prone to triggering. Danger zones will increase in both size and frequency as the day unfolds. In addition, on steep shady slopes in high alpine regions the interim layers inside the old snowpack are often trigger-prone. Medium-sized slab avalanches can be triggered by large additional loading there. In high alpine regions the danger zones are more frequent. Backcountry tours require a cautious route selection. Due to warmth and radiation, slides and loose-snow avalanches are possible, esp. on sunny slopes. Below 2600 m, glide-snow avalanches continue to be possible, and can grow to large size where snowfall is heavy.

**Snowpack structure**

The fresh fallen snow from the weekend was transported by intermittently strong and gusty southerly winds, fresh snowdrift accumulations were generated, lying deposited soft loose layers or atop blanketed graupel. Strong southerly winds are still transporting fresh snow and generating fresh snowdrift accumulations in the typical foehn lanes at high altitudes. The fresh snow and drifts often lie deposited atop melt-freeze encrusted layers, bonding is often poor. Below 2200 m the old snowpack is thoroughly moist, wet down to the ground, this reinforces gliding over smooth ground.

**Weather**

Nocturnal hours: foehn conditions by full moon, clouds dispersing somewhat. Tuesday daytime: Cirrus clouds will hamper the sun somewhat, light can be diffuse. At 2000 m: -5 to 0 degrees. Brisk southerly winds, often stormy in foehn lanes.

**Outlook**

On Wednesday, skies heavily overcast, some precipitation, snowfall level at 1500 m. Danger of dry-snow avalanches will recede somewhat. Gliding snow activity will persist.

Translated by Jeffrey McCabe, [www.creativtrans.com](http://www.creativtrans.com)

**Avalanche problems**



**Danger ratings**



**Expositions**

