

Considerable avalanche danger regionally at high altitudes due to fresh snow + drifts



2000 m
 Allgäuer Alpen, Lechquellengebirge, Verwall, Lechtaler Alpen, Silvretta, Rätikon Ost, Rätikon West



forestline
 Voralpenbereich, Bregenzerwaldgebirge



Avalanche problems



Danger ratings



Expositions



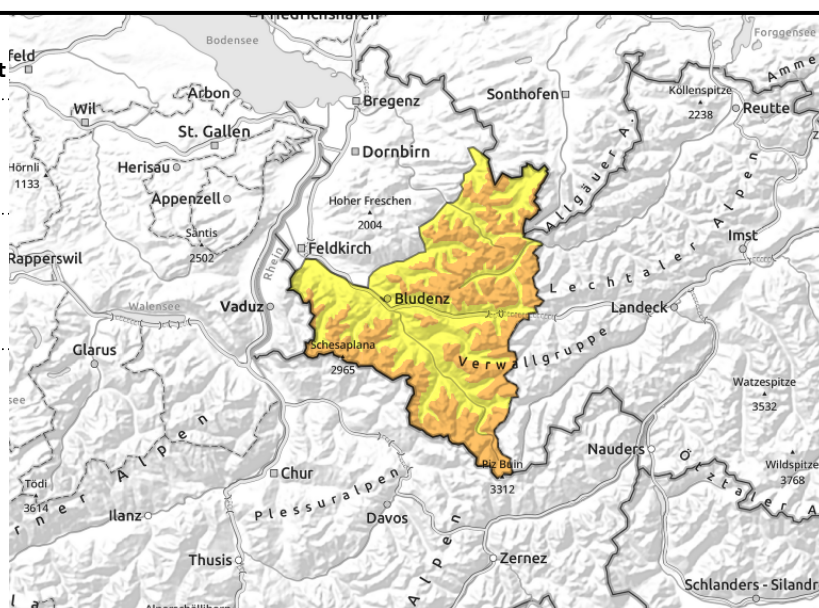
Allgäuer Alpen, Lechquellengebirge, Verwall, Lechtaler Alpen, Silvretta, Rätikon Ost, Rätikon West



>2000 m near ridges, behind discontinuities, wind-loaded gullies, bowls



<2600 m glide-snow avalanches on steep smooth slopes; slides and loose-snow avalanches



Considerable avalanche danger regionally at high altitudes due to fresh snow + drifts

Pay close heed to freshly generated snowdrift accumulations at high altitudes, they are triggerable by 1 person. Danger zones increase in both size and frequency with ascending altitude. In addition, on steep shady slopes in high alpine regions the interim layers inside the old snowpack are often trigger-prone. Medium-sized slab avalanches can be triggered by large additional loading there. In high alpine regions the danger zones are more frequent. Backcountry tours require a cautious route selection. Below 2600 m, glide-snow avalanches continue to be possible, and can grow to large size where snowfall is heavy.

Snowpack structure

The fresh fallen snow from Saturday was transported by intermittently strong and gusty winds, fresh snowdrift accumulations were generated in all aspects, lying deposited soft loose layers or atop blanketed graupel. The fresh snow and drifts often lie deposited atop melt-freeze encrusted layers. Below 2200 m the old snowpack is thoroughly moist, wet down to the ground, this reinforces gliding over smooth ground. Below 1500 m there is little snow on the ground.

Weather

Nocturnal hours: Heavily overcast skies, repeated bouts of snowfall plus strong winds. In Rätikon and Silvretta, less precipitation. Monday daytime: Clouds will rapidly disperse, it will turn quite sunny, temperatures rising noticeably. At 2000 m: -7 to 0 degrees. The NW winds will slacken off; in afternoon light southerly winds.

Outlook

Foehn conditions, esp. in the typical foehn zones with diffuse light. Danger of dry-snow avalanches will recede, but fresh drifts will be generated from place to place. Gliding snow activity will persist.

Avalanche problems



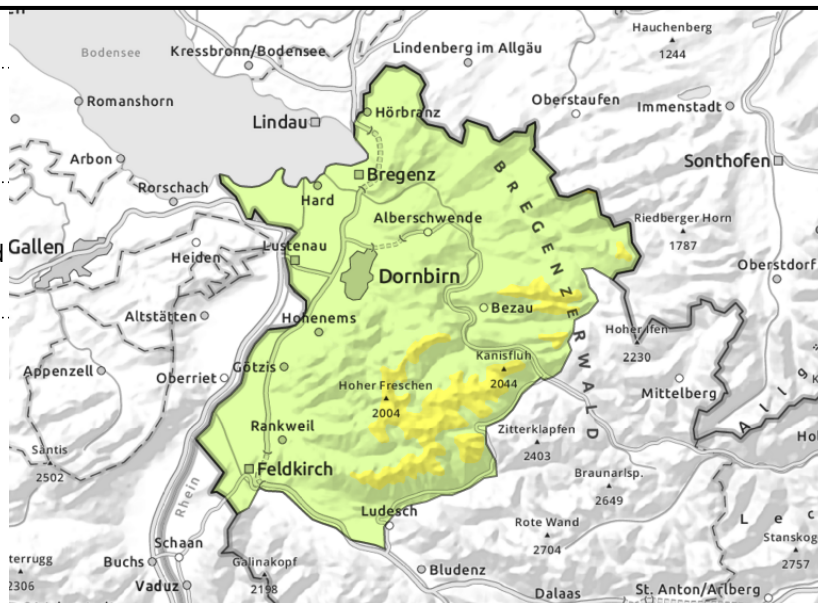
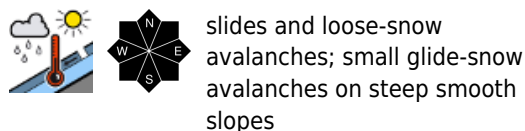
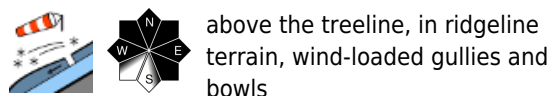
Danger ratings



Expositions



Voralpenbereich, Bregenzerwaldgebirge



Snowdrift accumulations at high altitudes are prone to triggering

Pay close heed to freshly generated snowdrift accumulations above the treeline, they are triggerable by 1 person. Danger zones increase in both size and frequency with ascending altitude. In addition, on steep shady slopes in high alpine regions the interim layers inside the old snowpack are often trigger-prone. Medium-sized slab avalanches can be triggered by large additional loading there. In high alpine regions the danger zones are more frequent. Backcountry tours require a cautious route selection. Below 2600 m, glide-snow avalanches continue to be possible, and can grow to large size where snowfall is heavy.

Snowpack structure

At high altitudes the snowfall from Saturday was transported by intermittently strong and gusty winds, fresh snowdrift accumulations were generated in all aspects, lying deposited soft loose layers or atop blanketed graupel. The fresh snow and drifts often lie deposited atop melt-freeze encrusted layers. Below 2200 m the old snowpack is thoroughly moist, wet down to the ground, this reinforces gliding over smooth ground. Below 1500 m there is little snow on the ground.

Weather

Nocturnal hours: Heavily overcast skies, repeated bouts of snowfall plus strong winds. In Rätikon and Silvretta, less precipitation. Monday daytime: Clouds will rapidly disperse, it will turn quite sunny, temperatures rising noticeably. At 2000 m: -7 to 0 degrees. The NW winds will slacken off; in afternoon light southerly winds.

Outlook

Foehn conditions, esp. in the typical foehn zones with diffuse light. Danger of dry-snow avalanches will recede, but fresh drifts will be generated from place to place. Gliding snow activity will persist.

Translated by Jeffrey McCabe, www.creativtrans.com

Avalanche problems



Danger ratings



Expositions

