

Considerable avalanche danger regionally at high altitudes due to fresh snow + drifts



2000 m Allgäuer Alpen, Lechquellengebirge, Verwall, Lechtaler Alpen, Silvretta, Rätikon Ost, Rätikon West



forestline Voralpenbereich, Bregenzerwaldgebirge



Avalanche problems



Danger ratings







Expositions

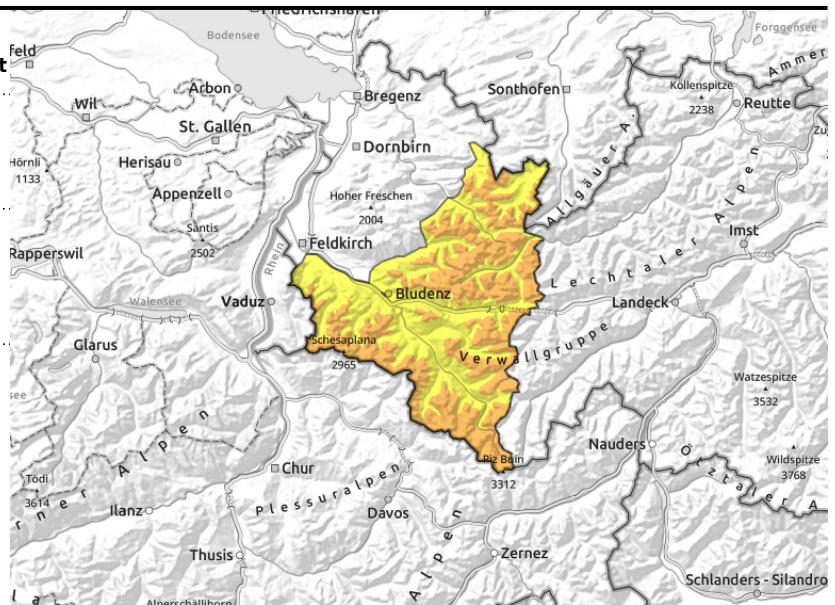


Allgäuer Alpen, Lechquellengebirge, Verwall, Lechtaler Alpen, Silvretta, Rätikon Ost, Rätikon West



  >2000 m near ridges, behind discontinuities, wind-loaded gullies, bowls

  <2600 m glide-snow avalanches on steep smooth slopes



Considerable avalanche danger regionally at high altitudes due to fresh snow + drifts

Pay close heed to freshly generated snowdrift accumulations at high altitudes, they are triggerable by 1 person. Danger zones increase in both size and frequency with ascending altitude. In addition, on steep shady slopes in high alpine regions the interim layers inside the old snowpack are often trigger-prone. Medium-sized slab avalanches can be triggered by large additional loading there. In high alpine regions the danger zones are more frequent. Backcountry tours require a cautious route selection. Below 2600 m, glide-snow avalanches continue to be possible, and can grow to large size where snowfall is heavy.

Snowpack structure

At high altitudes, 15-30 cm of fresh snow is expected by Sunday evening, it will be transported far-reachingly, new snowdrift accumulations will be generated, bonding inadequately with the loose old snowpack surface or with blanketed graupel layers. The fresh snow and drifts often lie deposited atop melt-freeze encrusted layers. Below 2200 m the old snowpack is thoroughly moist, wet down to the ground, this reinforces gliding over smooth ground. Below 1500 m there is little snow on the ground.

Weather

Nocturnal hours: Wet and cold, snow showers above 600-800 m. Strong W/NW winds with gusts.

Sunday daytime: Cold and wintery, snow and graupel showers. From Allgäu Alps over Arlberg as far as the Silvretta: significant snowfall. In the Montafon and Rätikon clouds could disperse. At 2000 m: -7 degrees. Strong W/NW winds.

Outlook

Monday will quickly turn sunny, temperatures rise again. Avalanche danger levels are not expected to change significantly. Due to warmth and radiation, increased slides and loose-snow avalanches can be expected. Gliding snow activity will persist.

Avalanche problems



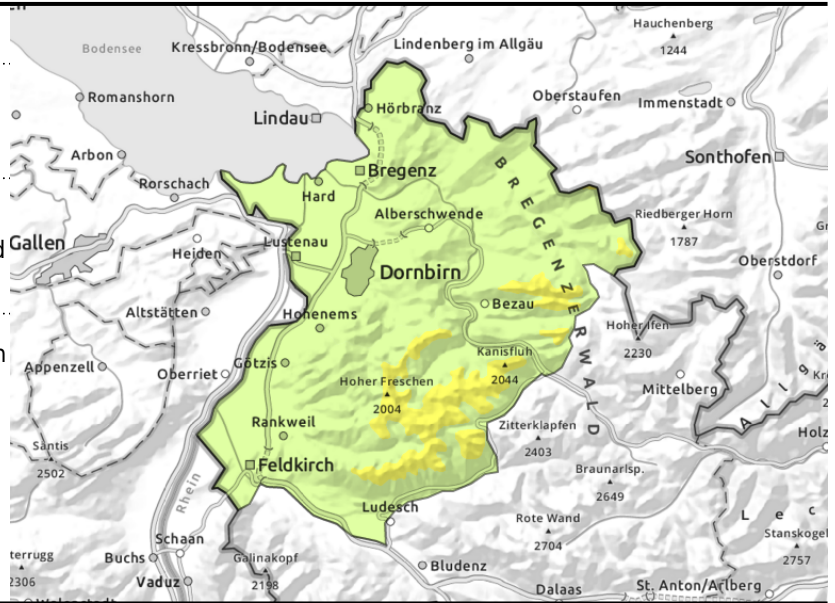
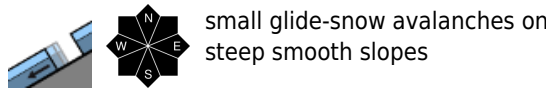
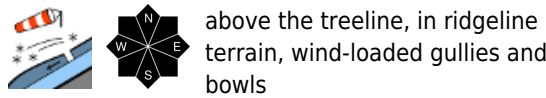
Danger ratings



Expositions



Voralpenbereich, Bregenzerwaldgebirge



Rise in avalanche danger due to fresh snow and snowdrifts

Pay close heed to fresh drifts above the treeline, they are prone to triggering. Small-to-medium slab avalanches can be triggered by 1 person. Danger zones increase in both size and frequency with ascending altitude. Below 2600 m, glide-snow avalanches continue to be possible, and can grow to large size where snowfall is heavy.

Snowpack structure

At high altitudes, 20 cm of fresh snow is expected by Sunday evening, it will be transported far-reachingly, new snowdrift accumulations will be generated, bonding inadequately with the loose old snowpack surface or with blanketed graupel layers. The fresh snow and drifts often lie deposited atop melt-freeze encrusted layers. Below 2200 m the old snowpack is thoroughly moist, wet down to the ground, this reinforces gliding over smooth ground. Below 1500 m there is little snow on the ground.

Weather

Nocturnal hours: Wet and cold, snow showers above 600-800 m. Strong W/NW winds with gusts.

Sunday daytime: Cold and wintery, snow and graupel showers. From Allgäu Alps over Arlberg as far as the Silvretta: significant snowfall. In the Montafon and Rätikon clouds could disperse. At 2000 m: -7 degrees. Strong W/NW winds.

Outlook

Monday will quickly turn sunny, temperatures rise again. Avalanche danger levels are not expected to change significantly. Due to warmth and radiation, increased slides and loose-snow avalanches can be expected. Gliding snow activity will persist.

Translated by Jeffrey McCabe, www.creativtrans.com

Avalanche problems



Danger ratings



Expositions

