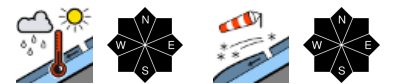


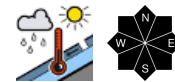
Considerable danger of wet-snow avalanches, at high altitudes fresh drifts due to snowfall and wind



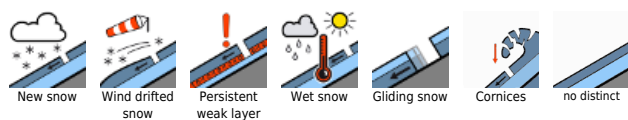
Allgäuer Alpen, Lechquellengebirge, Verwall, Lechtaler Alpen, Silvretta, Rätikon Ost, Rätikon West, Bregenzerwaldgebirge



Vorarlpenbereich



Avalanche problems



Danger ratings



Expositions



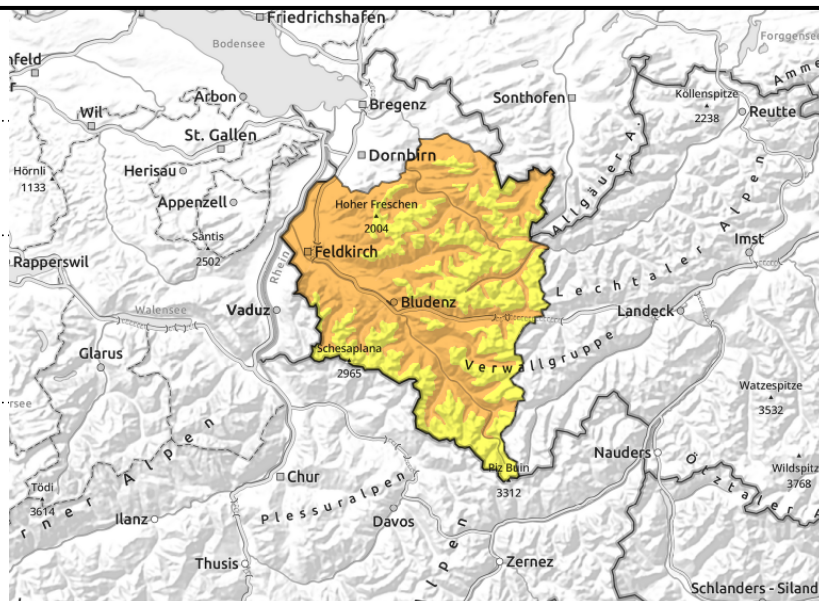
Allgäuer Alpen, Lechquellengebirge, Verwall, Lechtaler Alpen, Silvretta, Rätikon Ost, Rätikon West, Bregenzerwaldgebirge



<2600 m glide-snow avalanches on steep smooth slopes, <2200 m increasing wet-snow avalanches



>2200 m near ridges, behind discontinuities, wind-loaded gullies, bowls



Danger due to wet-snow/glide-snow avalanches. Heed drifts at high altitudes.

Avalanche danger below 2200 m is considerable, Due to rain impact, increasingly frequent wet-snow avalanches in steep terrain and glide-snow avalanches below 2600 m are possible in starting zones which have not yet discharged. Glide-snow and wet-snow avalanches can grow to large size where snowfall has been sufficient. In high ridgeline terrain and behind discontinuities, fresh drifts will be generated which are often trigger-prone, small but prone to triggering, esp on steep shady slopes at high altitudes the near-surface layers are also prone to triggering. Medium-sized slab avalanches can be triggered by large additional loading. In high-alpine regions the danger zones are more frequent. Backcountry tours require a cautious route selection.

Snowpack structure

On Thursday, up to 10 cm of fresh snow is expected, snowfall level at 2000 m. In higher ridgeline terrain and exposed zones the snow will be transported and new drifts generated, increasingly trigger-prone with ascending altitude. Below 2000 m the rain burdens the snowpack; and the moistening process continues, also on shady slopes. Over night a melt-freeze crust can often form. Below 1500 m there is little snow on the ground.

Weather

Nocturnal hours: Only thin clouds in the early part of the night, and good outgoing longwave radiation. Later on, heavier clouds. Thursday daytime: Gray skies and wet and cold, plus windy. Peaks will be shrouded in fog, visibility poor, snowfall above 1800-2000 m, heavy in the NW barrier cloud regions. In afternoon the snowfall will taper off.. At 2000 m: 1 degree. Moderate to strong northwesterly winds.

Outlook

After clouds move through Thursday night it will become mostly sunny on Friday, apart from a bit of fog, light winds, mild. Danger of dry-snow avalanches not change. Glide-snow avalanches and moist slides can still be expected.

Avalanche problems



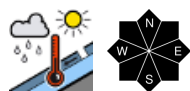
Danger ratings



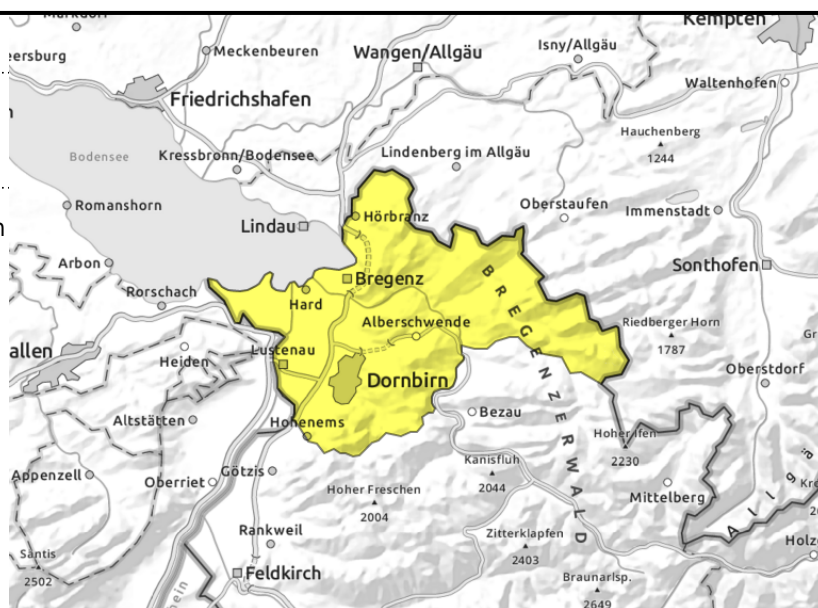
Expositions



Voralpenbereich



small glide-snow avalanches on steep smooth slopes, <2200 m
 increasing wet-snow avalanches



Moderate wet-snow and glide-snow avalanche danger

Avalanche danger is moderate. Due to rain impact, increasingly frequent wet-snow avalanches in steep terrain and glide-snow avalanches below 2600 m are possible in starting zones which have not yet discharged. Glide-snow and wet-snow avalanches can grow to large size where snowfall has been sufficient. Avoid zones below glide cracks.

Snowpack structure

On Thursday, up to 10 cm of fresh snow is expected, snowfall level at 2000 m. In higher ridgeline terrain and exposed zones the snow will be transported and new drifts generated, increasingly trigger-prone with ascending altitude. Below 2000 m the rain burdens the snowpack; and the moistening process continues, also on shady slopes. Over night a melt-freeze crust can often form. Below 1500 m there is little snow on the ground.

Weather

Nocturnal hours: Only thin clouds in the early part of the night, and good outgoing longwave radiation. Later on, heavier clouds. Thursday daytime: Gray skies and wet and cold, plus windy. Peaks will be shrouded in fog, visibility poor, snowfall above 1800-2000 m, heavy in the NW barrier cloud regions. In afternoon the snowfall will taper off.. At 2000 m: 1 degree. Moderate to strong northwesterly winds.

Outlook

After clouds move through Thursday night it will become mostly sunny on Friday, apart from a bit of fog, light winds, mild. Danger of dry-snow avalanches not change. Glide-snow avalanches and moist slides can still be expected.

Translated by Jeffrey McCabe, www.creativtrans.com

Avalanche problems



Danger ratings



Expositions

