

Moderate danger, small fresh high-altitude snowdrifts due to fresh snow + wind

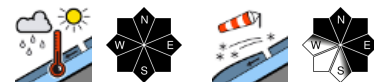


1500 m

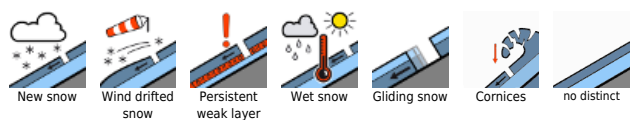
Bregenzerwaldgebirge, Allgäuer Alpen, Lechquellengebirge, Verwall, Lechtaler Alpen, Silvretta, Rätikon Ost, Rätikon West



Voralpenbereich



Avalanche problems



Danger ratings



Expositions



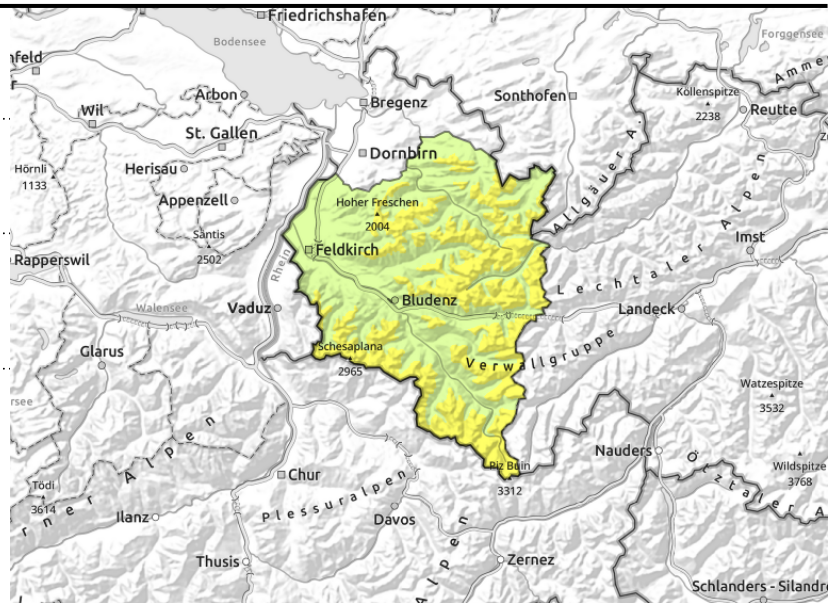
Bregenzerwaldgebirge, Allgäuer Alpen, Lechquellengebirge, Verwall, Lechtaler Alpen, Silvretta, Rätikon Ost, Rätikon West



>2200 m near ridges, behind discontinuities, wind-loaded gullies, bowls



<2600 m glide-snow avalanches on steep smooth slopes, slides and loose-snow avalanches



Mostly moderate danger, small fresh snowdrifts

Fresh snow and drifts on high shady slopes and at high altitudes are prone to triggering. Danger zones occur near ridges, behind discontinuities and in wind-loaded gullies and bowls. Small-to-medium slab avalanches and also loose-snow avalanches can be triggered by 1 person. In high-alpine regions danger zones are more frequent. Due to solar radiation and rising daytime temperatures, wet slides and loose-snow avalanches are possible esp. on very steep rocky slopes. Glide-snow avalanches can trigger at any time of day or night and grow to larger size.

Snowpack structure

At high altitudes, up to 30 cm of fresh snowfall is expected, in exposed terrain transported, and will generate fresh snowdrift accumulations which will be increasingly trigger-prone with ascending altitude. The snowpack is mostly compact and stable, weakened by rain impact at low altitudes, wet down to the ground. Below 1500 m there is little snow on the ground.

Weather

Nocturnal hours: Heavily overcast, rainfall, light snowfall above 1500-1700 m. Monday daytime: Gray skies, wet, reduced visibility, in afternoon strong snow and graupel showers with thunderstorm. Above 1500-1700 m, 10-30 cm of fresh snow expected. At 2000 m: 1 degree. Moderate-to-brisk northwesterly winds.

Outlook

On Tuesday an intermediate high will bring sunshine and milder temperatures. Danger of dry-snow avalanches will recede somewhat. Wet-snow and glide-snow avalanches are still possible.

Avalanche problems



Danger ratings



Expositions



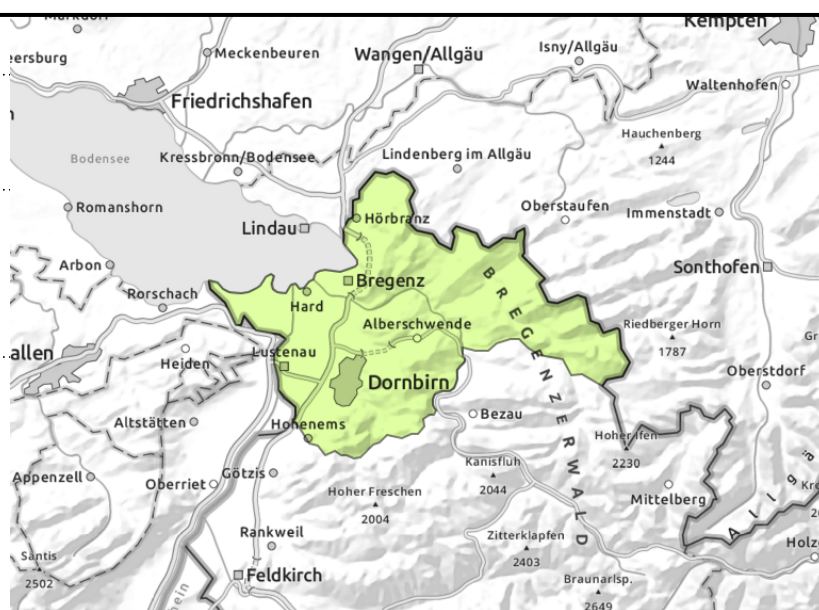
Voralpenbereich



small-to-medium glide-snow avalanches on steep smooth slopes, slides and loose-snow avalanches



ridgeline and extremely steep terrain



Low avalanche danger, moist slides and glide-snow avalanches

Avalanche danger is low. Moist slides and small-to-medium glide-snow avalanches can trigger on steep grass-covered slopes, in forest clearances and hillsides which have not yet discharged. Caution below glide cracks. In extremely steep terrain, isolated small avalanches can be triggered. Beware the risks of taking a fall. In high-altitude ridgeline terrain the fresh drifts are prone to triggering.

Snowpack structure

The old snowpack is generally compactd and stable despite rain impact, and wet down to the ground up to high altitudes. On high-altitude steep shady slopes, isolated small snowdrifts have persisted. Low altitude slopes are bare of snow.

Weather

Nocturnal hours: Heavily overcast, rainfall, light snowfall above 1500-1700 m. Monday daytime: Gray skies, wet, reduced visibility, in afternoon strong snow and graupel showers with thunderstorm. Above 1500-1700 m, 10-30 cm of fresh snow expected. At 2000 m: 1 degree. Moderate-to-brisk northwesterly winds.

Outlook

On Tuesday an intermediate high will bring sunshine and milder temperatures. Danger of dry-snow avalanches will recede somewhat. Wet-snow and glide-snow avalanches are still possible.

Translated by Jeffrey McCabe, www.creativtrans.com

Avalanche problems



Danger ratings



Expositions

