

## Persistent southerly foehn wind generated trigger-prone snowdrift accumulations ongoingly, regionally considerable avalanche danger

	Bregenzerwaldgebirge, Allgäuer Alpen				
	Voralpenbereich				
	2000 m Lechtaler Alpen, Lechquellengebirge, Verwall, Silvretta, Rätikon Ost, Rätikon West				

### Avalanche problems



### Danger ratings



### Expositions



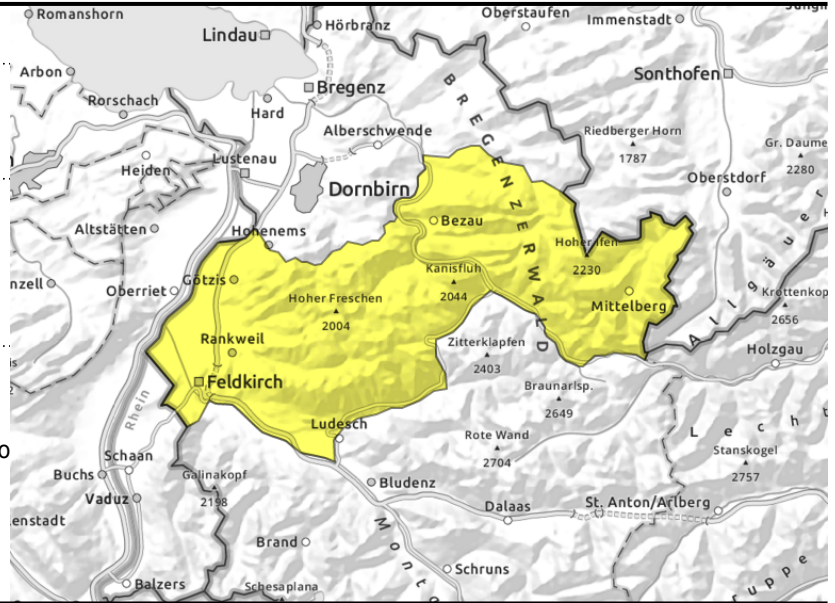
**Bregenzerwaldgebirge, Allgäuer Alpen**



>2000 m near to and distant from ridgelines, behind discontinuities, wind-loaded gullies, bowls



<2400 m glide-snow avalanches on steep smooth slopes, loose-snow slides due to solar radiation and warmth



**Pay close heed to snowdrifts at high altitudes**

Fresh drifts are still trigger-prone at high altitude and on steep shady slopes. A small-to-medium slab and in steep terrain also loose-snow avalanche can be triggered by 1 person. Such danger zones will increase with ascending altitude. Snowdrift masses in steep terrain should be avoided. On very steep and rocky slopes, slides and loose-snow avalanches can be expected during the course of the day due to solar radiation. Glide-snow avalanches can trigger at any time of day or night and grow to medium size in zones where snowfall has been heavy. Caution below glide-cracks.

**Snowpack structure**

Due to persistent southerly foehn wind, fresh snowdrift accumulations have been generated ongoingly, deposited atop a soft surface and often atop surface hoar, esp. on shady slopes at high altitudes. Bonding is often poor-to-moderate. The old snowpack is compact and stable, shows stark impact from wind. A low and intermediate altitudes the snowpack is wet down to the ground. On sunny slopes a breakable crust forms at night.

**Weather**

Nocturnal hours: Snowfall above 1200 m, then dry weather with residual clouds. Monday daytime: Quite sunny in many regions, cloud cover later on will increase, minor snow showers above 1300 m can be expected. At 2000 m: -2 degrees. Light winds at all altitudes.

**Outlook**

Slight perturbances will increase cloud cover on Tuesday, light-to-moderate snowfall amid brisk westerly winds. Danger of dry-snow avalanches will increase somewhat, depending on the amount of fresh snowfall.

**Avalanche problems**



**Danger ratings**



**Expositions**



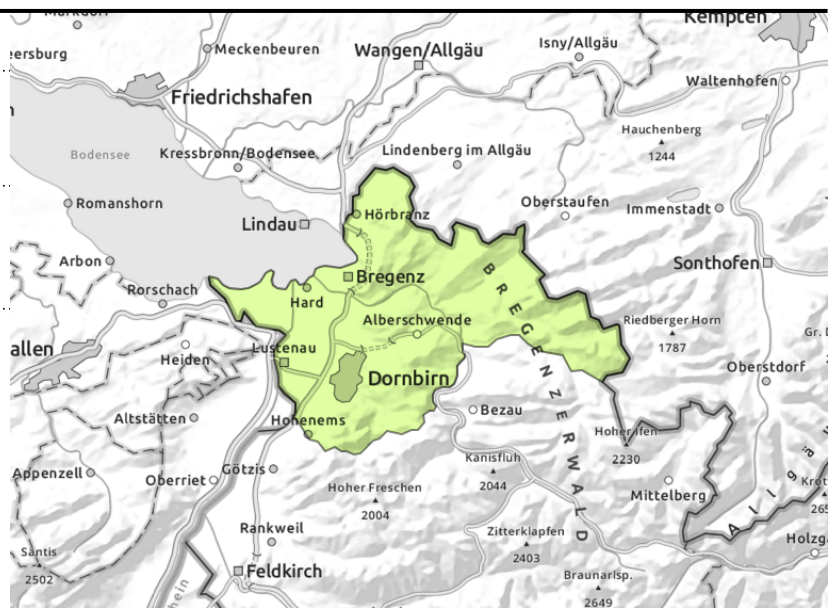
**Voralpenbereich**



local snowdrift accumulations at high altitudes



moist loose-snow slides in very steep terrain, glide-snow avalanche in very steep terrain



**Loose-snow slides and small glide-snow avalanches**

Mostly low avalanche danger prevails. Due to mild temperatures and solar radiation, loose-snow slides are possible on very steep slopes, In additional, in zones where snowfall has been heavy, small isolated medium-sized glide-snow avalanches are possible on steep grass-covered slopes, in forest clearances and on hillsides. Caution below glide cracks, Small snowdrifts and loose-snow slides can be triggered by 1 person in steep terrain. Consider the risks of being swept along and forced to take a fall!

**Snowpack structure**

Due to persistent southerly foehn wind, fresh snowdrift accumulations have been generated ongoingly, deposited atop a soft surface and often atop surface hoar, esp. on shady slopes at high altitudes. Bonding is often poor-to-moderate. The old snowpack is compact and stable, shows stark impact from wind. A low and intermediate altitudes the snowpack is wet down to the ground. On sunny slopes a breakable crust forms at night.

**Weather**

Nocturnal hours: Snowfall above 1200 m, then dry weather with residual clouds. Monday daytime: Quite sunny in many regions, cloud cover later on will increase, minor snow showers above 1300 m can be expected. At 2000 m: -2 degrees. Light winds at all altitudes.

**Outlook**

Slight perturbances will increase cloud cover on Tuesday, light-to-moderate snowfall amid brisk westerly winds. Danger of dry-snow avalanches will increase somewhat, depending on the amount of fresh snowfall.

**Avalanche problems**



**Danger ratings**



**Expositions**



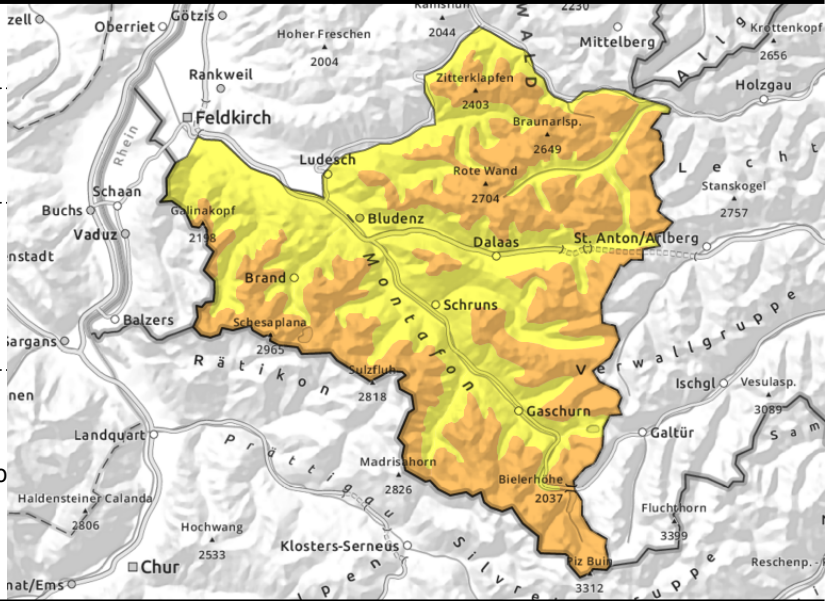
**Lechtaler Alpen, Lechquellengebirge, Verwall, Silvretta, Rätikon Ost, Rätikon West**



>2000 m near to and distant from ridgelines, behind discontinuities, wind-loaded gullies, bowls



<2400 m glide-snow avalanches on steep smooth slopes, loose-snow slides due to solar radiation and warmth



**Due to snowdrifts: considerable danger at high altitudes**

Fresh drifts are trigger-prone at high altitude and on steep shady slopes. A small-to-medium slab and in steep terrain also loose-snow avalanche can be triggered by 1 person. Such danger zones will increase with ascending altitude. Snowdrift masses in steep terrain should be avoided. Glide-snow avalanches can trigger at any time of day or night and grow to medium size in zones where snowfall has been heavy. Caution below glide-cracks.

**Snowpack structure**

Due to persistent southerly foehn wind, fresh snowdrift accumulations have been generated ongoingly, deposited atop a soft surface and often atop surface hoar, esp. on shady slopes at high altitudes. Bonding is often poor-to-moderate. The old snowpack is compact and stable. A low and intermediate altitudes the snowpack is wet down to the ground. On sunny slopes a breakable crust forms at night.

**Weather**

Nocturnal hours: Snowfall above 1200 m, then dry weather with residual clouds. Monday daytime: Quite sunny in many regions, cloud cover later on will increase, minor snow showers above 1300 m can be expected. At 2000 m: -2 degrees. Light winds at all altitudes.

**Outlook**

Slight perturbances will increase cloud cover on Tuesday, light-to-moderate snowfall amid brisk westerly winds. Danger of dry-snow avalanches will increase somewhat, depending on the amount of fresh snowfall.

Translated by Jeffrey McCabe, [www.creativtrans.com](http://www.creativtrans.com)

**Avalanche problems**



**Danger ratings**



**Expositions**

