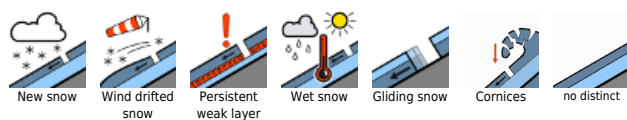


Considerable avalanche danger regionally due to stormy southerly winds, fresh snowdrifts

	Bregenzerwaldgebirge, Allgäuer Alpen				
	Voralpenbereich				
	2000 m Lechtaler Alpen, Lechquellengebirge, Verwall, Silvretta, Rätikon Ost, Rätikon West				

Avalanche problems



Danger ratings



Expositions



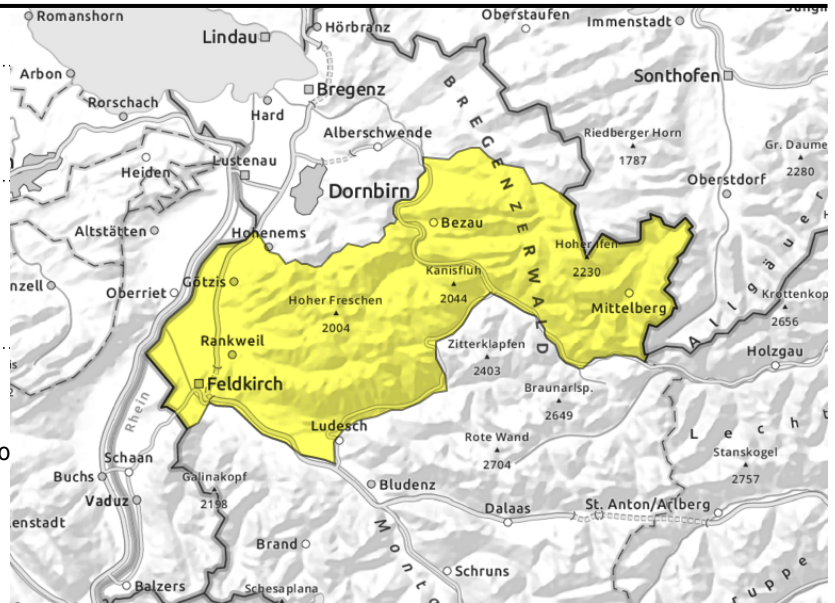
Bregenzerwaldgebirge, Allgäuer Alpen



>2000 m near to and distant from ridgelines, behind discontinuities, wind-loaded gullies, bowls



<2400 m glide-snow avalanches on steep smooth slopes, loose-snow slides due to solar radiation and warmth



Pay close heed to snowdrifts at high altitudes

Fresh drifts are trigger-prone at high altitude and on steep shady slopes. A small-to-medium slab and in steep terrain also loose-snow avalanche can be triggered by 1 person. Such danger zones will increase with ascending altitude. Snowdrift masses in steep terrain should be avoided. On very steep and rocky slopes, slides and loose-snow avalanches can be expected during the course of the day due to solar radiation. Glide-snow avalanches can trigger at any time of day or night and grow to medium size in zones where snowfall has been heavy. Caution below glide-cracks.

Snowpack structure

Due to persistent southerly foehn wind, fresh snowdrift accumulations are being generated ongoingly, deposited atop a soft surface and often atop surface hoar, esp. on shady slopes at high altitudes. Bonding is often poor-to-moderate. The old snowpack is compact and stable. A low and intermediate altitudes the snowpack is wet down to the ground. On sunny slopes a breakable crust forms at night.

Weather

Nocturnal hours: Foehn impact, dry, with heavily overcast skies, strong-to-stormy southerly winds in the classic foehn lanes. Sunday daytime: Far-reaching clouds, little sunshine (likeliest in Allgäu Alps) In Rätikon and Silvretta the peaks will be veiled in fog from the start, light snowfall expected. In afternoon, foehn-induced snow showers will spread northwards. At 2000 m: +1 to -2 degrees. Strong to stormy southerly winds, in afternoon slackening off significantly.

Outlook

Starting on Monday, snowdrift problem will recede, amidst light to moderate winds.

Avalanche problems



Danger ratings



Expositions



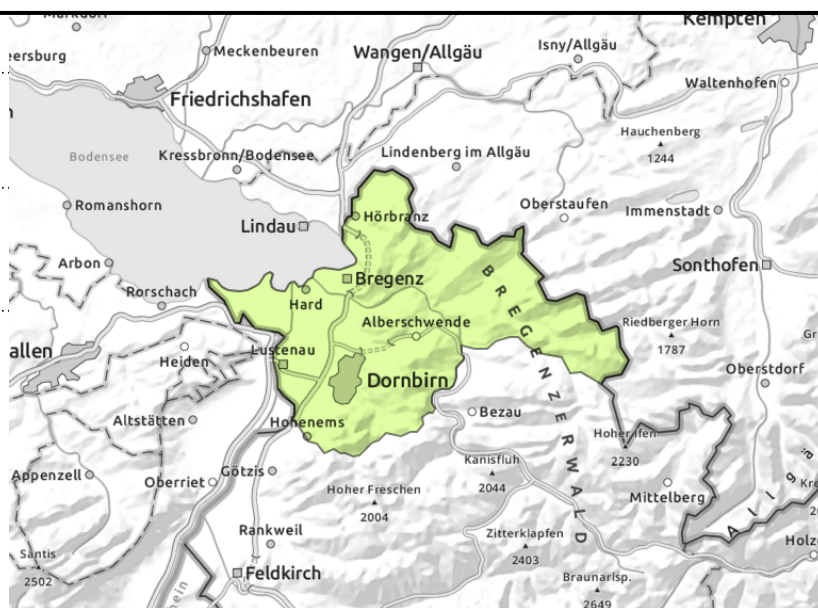
Voralpenbereich



wet loose-snow slides in very steep terrain



local snowdrift accumulations at high altitudes



Loose-snow slides and small glide-snow avalanches

Mostly low avalanche danger prevails. Due to mild temperatures and solar radiation, loose-snow slides are possible on very steep slopes, In additional, in zones where snowfall has been heavy, small isolated medium-sized glide-snow avalanches are possible on steep grass-covered slopes, in forest clearances and on hillsides. Caution below glide cracks, Small snowdrifts and loose-snow slides can be triggered by 1 person in steep terrain. Consider the risks of being swept along and forced to take a fall!

Snowpack structure

Due to persistent southerly foehn wind, fresh snowdrift accumulations are being generated ongoingly, deposited atop a soft suface and often atop surface hoar, esp. on shady slopes at high altitudes. Bonding is often poor-to-moderate. The old snowpack is compact and stable. A low and intermediate altitudes the snowpack is wet down to the ground. On sunny slopes a breakable crust forms at night.

Weather

Nocturnal hours: Foehn impact, dry, with heavily overcast skies, strong-to-stormy southerly winds in the classic foehn lanes. Sunday daytime: Far-reaching clouds, little sunshine (likeliest in Allgäu Alps) In Rätikon and Silvretta the peaks will be veiled in fog from the start, light snowfall expected. In afternoon, foehn-induced snow showers will spread northwards. At 2000 m: +1 to -2 degrees. Strong to stormy southerly winds, in afternoon slackening off significantly.

Outlook

Starting on Monday, snowdrift problem will recede, amidst light to moderate winds.

Avalanche problems



Danger ratings



Expositions



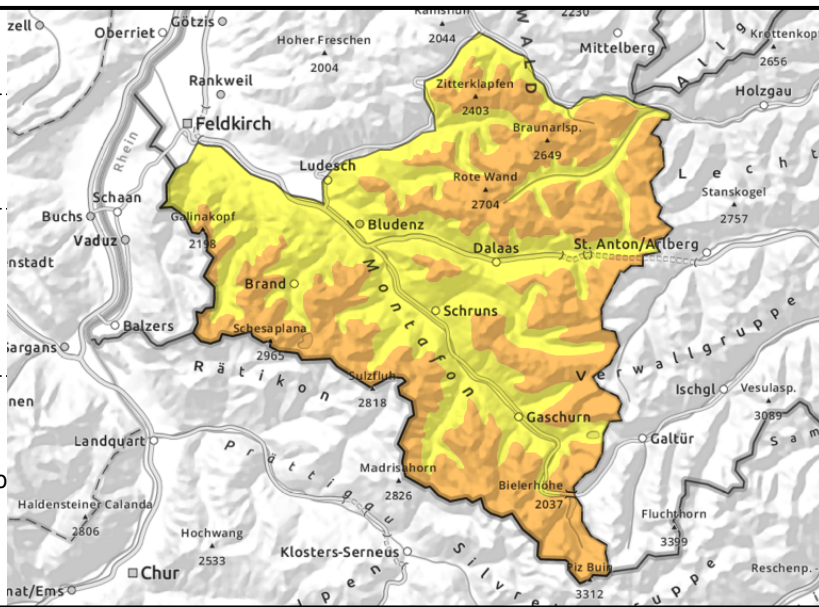
Lechtaler Alpen, Lechquellengebirge, Verwall, Silvretta, Rätikon Ost, Rätikon West



>2000 m near to and distant from ridgelines, behind discontinuities, wind-loaded gullies, bowls



<2400 m glide-snow avalanches on steep smooth slopes, loose-snow slides due to solar radiation and warmth



Fresh snowdrifts accumulating: considerable danger at high altitudes

Fresh drifts are trigger-prone at high altitude and on steep shady slopes. A small-to-medium slab and in steep terrain also loose-snow avalanche can be triggered by 1 person. Such danger zones will increase with ascending altitude. Snowdrift masses in steep terrain should be avoided. Glide-snow avalanches can trigger at any time of day or night and grow to medium size in zones where snowfall has been heavy. Caution below glide-cracks.

Snowpack structure

Due to persistent southerly foehn wind, fresh snowdrift accumulations are being generated ongoingly, deposited atop a soft surface and often atop surface hoar, esp. on shady slopes at high altitudes. Bonding is often poor-to-moderate. The old snowpack is compact and stable. A low and intermediate altitudes the snowpack is wet down to the ground. On sunny slopes a breakable crust forms at night.

Weather

Nocturnal hours: Foehn impact, dry, with heavily overcast skies, strong-to-stormy southerly winds in the classic foehn lanes. Sunday daytime: Far-reaching clouds, little sunshine (likeliest in Allgäu Alps) In Rätikon and Silvretta the peaks will be veiled in fog from the start, light snowfall expected. In afternoon, foehn-induced snow showers will spread northwards. At 2000 m: +1 to -2 degrees. Strong to stormy southerly winds, in afternoon slackening off significantly.

Outlook

Starting on Monday, snowdrift problem will recede, amidst light to moderate winds.

Translated by Jeffrey McCabe, www.creativtrans.com

Avalanche problems



Danger ratings



Expositions

