

Often considerable avalanche danger at high altitudes due to fresh snow and drifts



2000 m
 Allgäuer Alpen, Bregenzerwaldgebirge, Lechtallengebirge, Lechtaler Alpen,
 Rätikon West, Rätikon Ost, Silvretta, Verwall



forestline
 Vorarlpenbereich



Avalanche problems



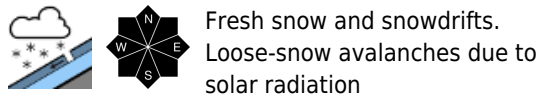
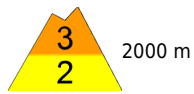
Danger ratings



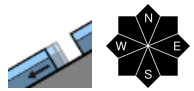
Expositions



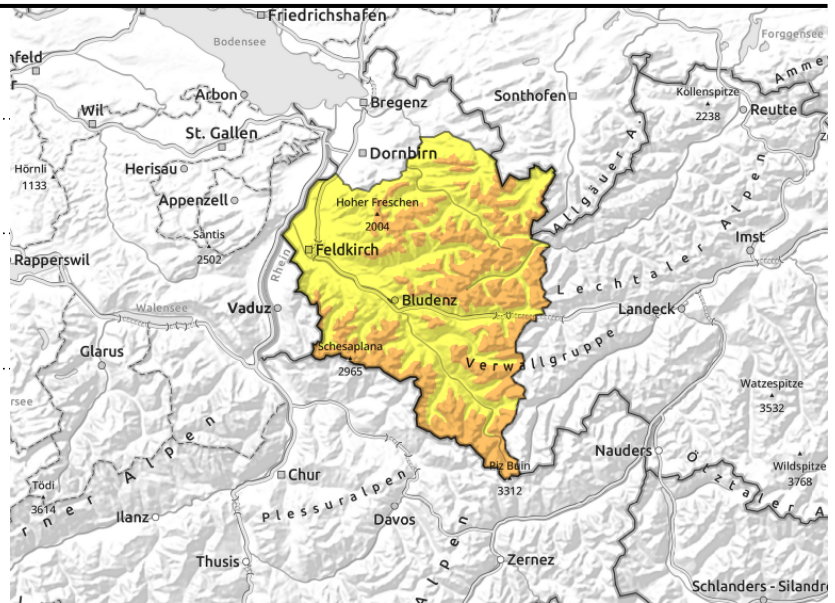
Allgäuer Alpen, Bregenzerwaldgebirge, Lechquellengebirge, Lechtaler Alpen, Rätikon West, Rätikon Ost, Silvretta, Verwall



Fresh snow and snowdrifts.
Loose-snow avalanches due to solar radiation



<2400 m glide-snow
avalanches on steep smooth slopes, wet-snow slides



Fresh snow and freshly generated snowdrifts are prone to triggering

At high altitudes the fresh snow and freshly generated snowdrift accumulations are prone to triggering. One person can trigger small-to-medium slab and loose-snow avalanches. Such danger zones are getting covered by fresh snow, are thus hard to recognize. In backcountry terrain, experience in assessing dangers on-site and knowledge of the land is imperative. Glide-snow avalanches can trigger at any time of day or night and in isolated cases reach medium size. Caution below glide cracks.

Snowpack structure

Particularly in ridgeline terrain the fresh snow was transported. Fresh snow and drifts are generally well bonded with the snowpack, worse in high-alpine regions. Older snowdrift accumulations lie deposited atop soft layers on shady slopes at high altitudes. The old snowpack is generally compact and stable, at lower and intermediate altitudes it is thoroughly moist and wet at ground level. At lower altitudes the snow is being deposited on bare ground.

Weather

Nocturnal hours: Light-to-moderate snowfall in the early part of the night, snowfall level 500-900 m. Thereafter it will be dry and clouds will disperse. Thursday daytime: Residual clouds will be dispersed by sunshine, visibility good, some convective cloud build-up in afternoon. At 2000 m: -2 degrees. Moderate E/NE winds.

Outlook

Foehn impact will make it quite sunny and mild. In high-alpine regions and foehn lanes, strong SW winds will arise, leading to snow transport. Avalanche danger levels are not expected to change significantly.

Avalanche problems



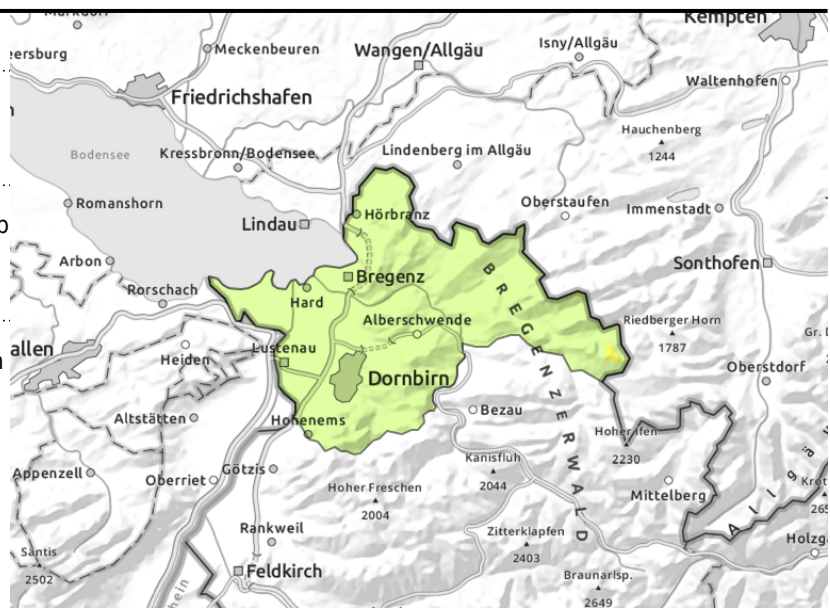
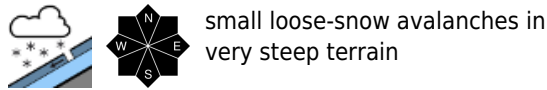
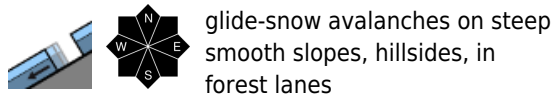
Danger ratings



Expositions



Voralpenbereich



Loose-snow slides and small glide-snow avalanches i

Small-to-medium glide-snow avalanches are still possible on steep grass-covered slopes, in forest clearances and on hillsides. Caution urged below glide cracks. In very steep terrain, small loose wet-snow avalanches can be expected, these can also be triggered by 1 person in steep terrain. Danger of being swept along and being forced to take a fall should be taken into consideration.

Snowpack structure

The latest round of fresh snow lies deposited atop a largely wet snowpack, it is well bonded with the old snowpack. In ridgeline terrain and above the treeline, small snowdrift accumulations have been generated. Warm ground and the wet snowpack base reinforce the gliding movements of the entire snowpack. At low altitudes the snowfall was deposited on bare ground.

Weather

Nocturnal hours: Light-to-moderate snowfall in the early part of the night, snowfall level 500-900 m. Thereafter it will be dry and clouds will disperse. Thursday daytime: Residual clouds will be dispersed by sunshine, visibility good, some convective cloud build-up in afternoon. At 2000 m: -2 degrees. Moderate E/NE winds.

Outlook

Foehn impact will make it quite sunny and mild. In high-alpine regions and foehn lanes, strong SW winds will arise, leading to snow transport. Avalanche danger levels are not expected to change significantly.

Translated by Jeffrey McCabe, www.creativtrans.com

Avalanche problems



Danger ratings



Expositions

