

## Due to fresh snow and snowdrifts at high altitudes, considerable danger regionally

	2000 m	Allgäuer Alpen, Bregenzerwaldgebirge, Lechquellengebirge, Lechtaler Alpen			
	forestline	Voralpenbereich			
		Rätikon West, Rätikon Ost, Silvretta, Verwall			

### Avalanche problems



### Danger ratings



### Expositions

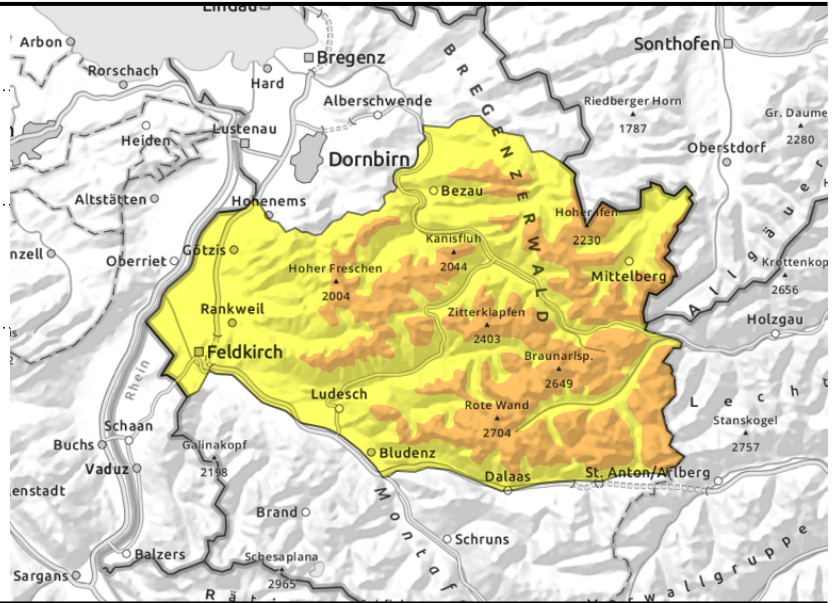


**Allgäuer Alpen, Bregenzerwaldgebirge, Lechquellengebirge, Lechtaler Alpen**



fresh snow, freshly generated snowdrifts

<2400 m glide-snow avalanches on steep smooth slopes, wet-snow slides



**Fresh snow and freshly generated snowdrifts are prone to triggering**

At high altitudes the fresh snow and freshly generated snowdrift accumulations are prone to triggering. One person can trigger small-to-medium avalanches. Older, covered snowdrift masses are easily triggered, esp. by large additional loading. Such danger zones are getting covered by fresh snow, are thus hard to recognize. Glide-snow avalanches can trigger at any time of day or night and in isolated cases reach medium size. Caution below glide cracks. In very steep terrain, slides and small loose-snow avalanches are possible.

**Snowpack structure**

Snowfall (20-40 cm) anticipated, locally up to 50 cm, esp. in ridgeline terrain it will be transported. Fresh and small snowdrifts bond well with the old snowpack due to wind and warmth. Older snowdrift accumulations lie deposited atop soft layers, esp. on high-altitude shady slopes. The old snowpack is generally compact and stable, at lower and intermediate altitudes it is thoroughly moist and wet at ground level. At lower altitudes the snow is being deposited on bare ground.

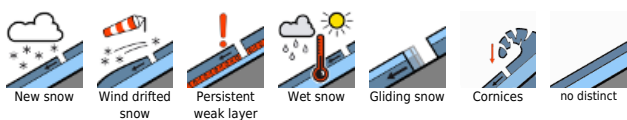
**Weather**

Nocturnal hours: Gray skies, wet weather, snowfall down to low lying areas. Wednesday daytime: Gray skies, poor visibility, light-to-moderate snowfall all day long. At 2000 m: -5 degrees. Moderate to brisk easterly winds.

**Outlook**

Thursday will be quite sunny. Danger levels will recede.

**Avalanche problems**



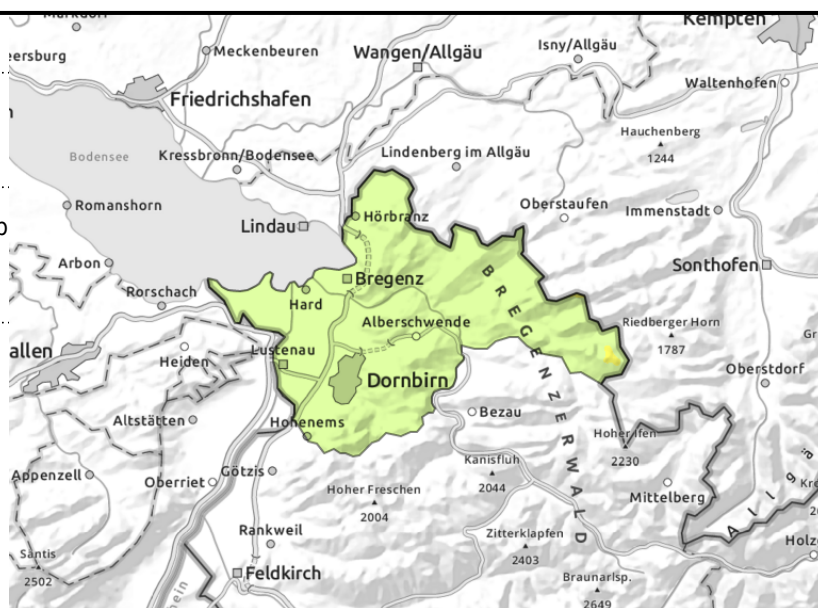
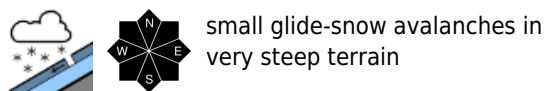
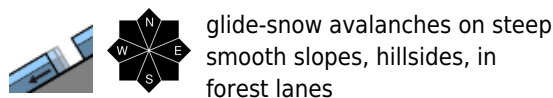
**Danger ratings**



**Expositions**



**Voralpenbereich**



**Loose-snow slides and small glide-snow avalanches**

Small-to-medium glide-snow avalanches are still possible on steep grass-covered slopes, in forest clearances and on hillsides. Caution urged below glide cracks. In very steep terrain, small loose wet-snow avalanches can be expected, these can also be triggered by 1 person in steep terrain. Danger of being swept along and being forced to take a fall should be taken into consideration.

**Snowpack structure**

There will be 10-15 cm of fresh snow, locally up to 30 cm, amid wind impact, deposited at intermediate altitudes atop a thoroughly moist and at ground level wet snowpack. The fresh snow will bond well with the old snowpack. Warm ground and the wet snowpack base reinforce the gliding movements of the entire snowpack. At low altitudes the snowfall will be deposited on bare ground.

**Weather**

Nocturnal hours: Gray skies, wet weather, snowfall down to low lying areas. Wednesday daytime: Gray skies, poor visibility, light-to-moderate snowfall all day long. At 2000 m: -5 degrees. Moderate to brisk easterly winds.

**Outlook**

Thursday will be quite sunny. Avalanche danger levels are not expected to change significantly.

**Avalanche problems**



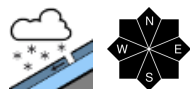
**Danger ratings**



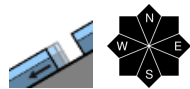
**Expositions**



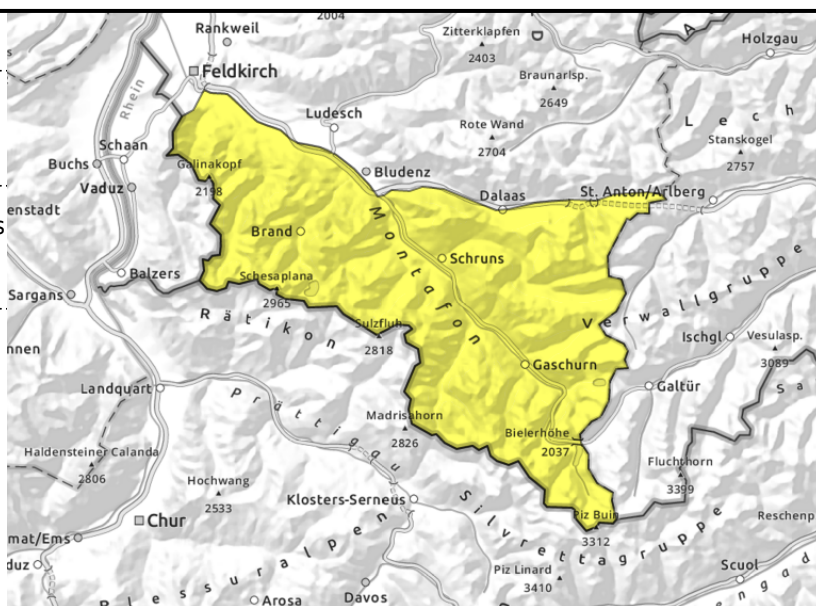
**Rätikon West, Rätikon Ost, Silvretta, Verwall**



fresh snow and fresh snowdrifts



<2400 m glide-snow  
 avalanches on steep slopes  
 with smooth ground, wet-snow  
 slides



**Fresh snow and freshly generated snowdrifts are prone to triggering**

At high altitudes the fresh snow and freshly generated snowdrift accumulations are prone to triggering. One person can trigger small-to-medium avalanches. Older, covered snowdrift masses are easily triggered, esp. by large additional loading. Such danger zones are getting covered by fresh snow, are thus hard to recognize. Glide-snow avalanches can trigger at any time of day or night and in isolated cases reach medium size. Caution below glide cracks. In very steep terrain, slides and small loose-snow avalanches are possible.

**Snowpack structure**

Snowfall (20-30 cm) anticipated, locally up to 50 cm, esp. in ridgeline terrain it will be transported. Fresh and small snowdrifts bond well with the old snowpack due to wind and warmth. Older snowdrift accumulations lie deposited atop soft layers, esp. on high-altitude shady slopes. The old snowpack is generally compact and stable, at lower and intermediate altitudes it is thoroughly moist and wet at ground level. At lower altitudes the snow is being deposited on bare ground.

**Weather**

Nocturnal hours: Gray skies, wet weather, snowfall down to low lying areas. Wednesday daytime: Gray skies, poor visibility, light-to-moderate snowfall all day long. At 2000 m: -5 degrees. Moderate to brisk easterly winds.

**Outlook**

Thursday will be quite sunny. Avalanche danger levels are not expected to change significantly.

Translated by Jeffrey McCabe, [www.creativtrans.com](http://www.creativtrans.com)

**Avalanche problems**



**Danger ratings**



**Expositions**

