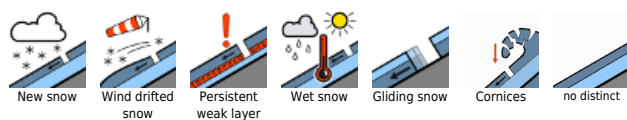


## Fresh snowdrift accumulations at high altitude. Wet-snow/glide-snow avalanches.

	Lechquellengebirge, Lechtaler Alpen, Allgäuer Alpen, Bregenzerwaldgebirge				
	Voralpenbereich				
	Rätikon West, Rätikon Ost, Silvretta, Verwall 2200 m				

### Avalanche problems



### Danger ratings



### Expositions



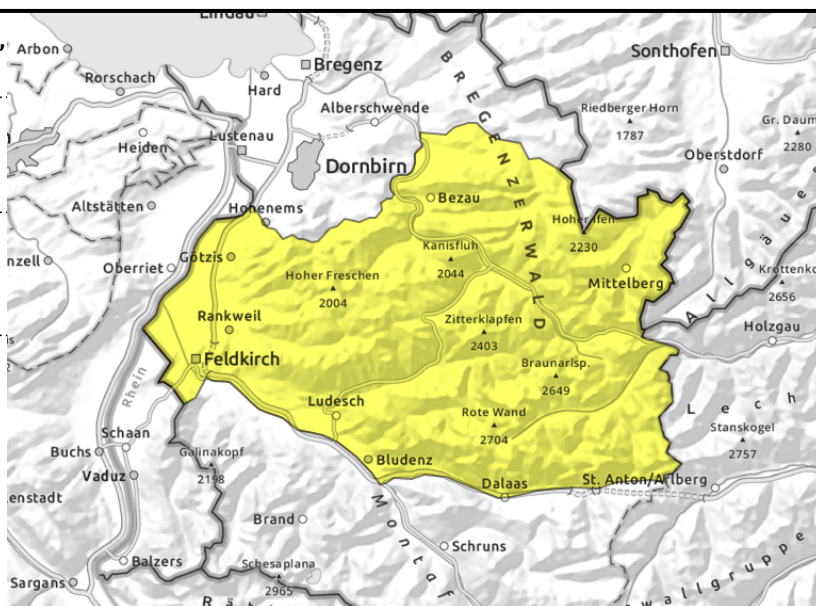
**Lechquellengebirge, Lechtaler Alpen, Allgäuer Alpen, Bregenzerwaldgebirge**



>2000 fresh snowdrifts trigger prone



<2400 m glide-snow avalanches on steep smooth slopes, loose wet-snow avalanches



**Foehn storm will transport loose snow at high altitudes**

As a result of storm-strength foehn winds, fresh snowdrift accumulations will be generated. Avalanches are easily triggerable in the drifts, releases mostly small. Evaluate the snowdrifts with caution in steep terrain. In additional, avalanches can trigger in near-surface layers of the snowpack, in isolated cases reach medium size. Danger zones occur on north-facing slopes above 2400 m in very steep terrain, esp. in transitions from shallow to deep snow, e.g. at entries into gullies and bowls. Activities in backcountry demand experience in outlying terrain and the ability to assess avalanche dangers on-site, as well as a cautious route selection. Due to increasing wetness of the snowpack, gliding snow and wet-snow activity is increasing. Glide-snow avalanches can trigger below 2600 m at any time of day or night and reach large size. Caution urged below glide cracks. Due to rain impact, mostly small-sized wet loose-snow avalanches can be expected.

**Snowpack structure**

Due to strong southerly winds on Saturday, fresh trigger-prone snowdrift accumulations were generated. On Sunday, foehn winds will continue to intensify in velocity. Fresh snowdrift accumulations will be deposited on high-altitude shady slopes atop soft layers. On north-facing slopes above 2400 m, near-surface weak layers have persisted. The old snowpack is generally compact and stable. At low and intermediate altitudes it is thoroughly wet down to the ground. Clouds passing through will hamper nocturnal longwave outgoing radiation, a crust capable of bearing loads cannot form easily. Warmth is making the snowpack weaker, esp. in wind-protected terrain.

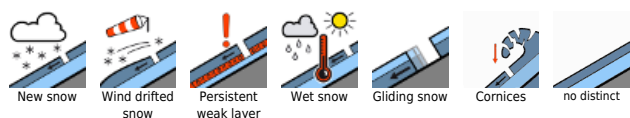
**Weather**

Nocturnal hours: Foehn wind will intensify in the classic valleys, mild. Sunday daytime: Foehn storm in the mountains. Sunny with harmless cloudbanks above the summits. At 2000 m: 0 degrees. Strong to stormy southerly winds.

**Outlook**

On Monday a mixture of sunshine and clouds. Avalanche danger levels are not expected to change significantly.

**Avalanche problems**



**Danger ratings**



**Expositions**



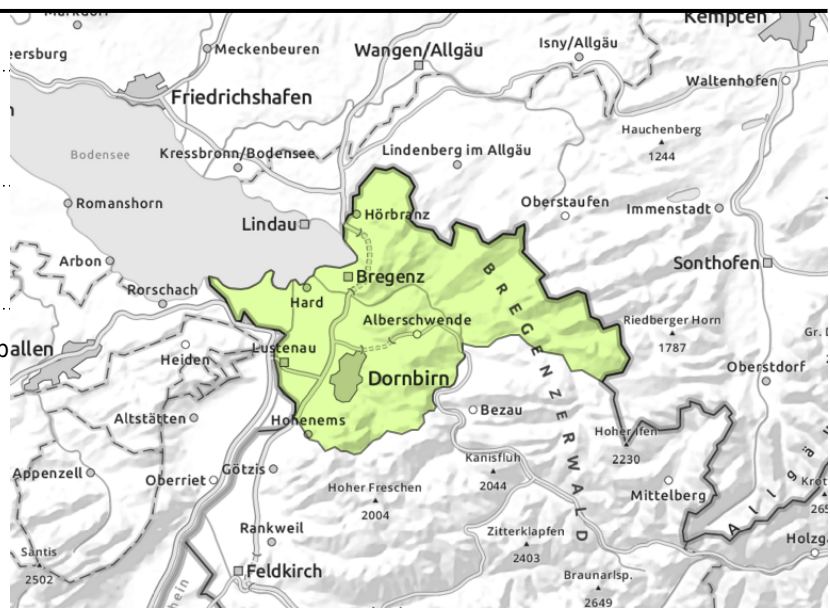
**Voralpenbereich**



moist slides



glide-snow avalanches on steep slopes  
smooth slopes



**Main danger: wet-snow/glide-snow avalanches**

Small-to-medium glide-snow avalanches are still possible. Caution urged below glide cracks. In very steep terrain, small loose wet-snow avalanches can be expected, these can also be triggered by 1 person in steep terrain. Danger of being swept along and being forced to take a fall should be taken into consideration.

**Snowpack structure**

At low and intermediate altitudes the snowpack is thoroughly wet down to the ground. Clouds passing through will hamper nocturnal longwave outgoing radiation, a crust capable of bearing loads cannot form easily. Warmth is making the snowpack weaker, esp. in wind-protected terrain. Warm ground and the wet snowpack base reinforce the gliding movements of the entire snowpack. Very little snow on the ground below 1400 m.

**Weather**

Nocturnal hours: Foehn wind will intensify in the classic valleys, mild. Sunday daytime: Foehn storm in the mountains. Barrier cloud buildup is possible in the Silvretta. At 2000 m: -4 to 0 degrees. Strong to stormy SW winds.

**Outlook**

Due to foehn storm on Sunday, fresh snowdrift accumulations will be generated. Avalanche danger will increase. Glide-snow avalanches are still possible.

**Avalanche problems**



**Danger ratings**



**Expositions**

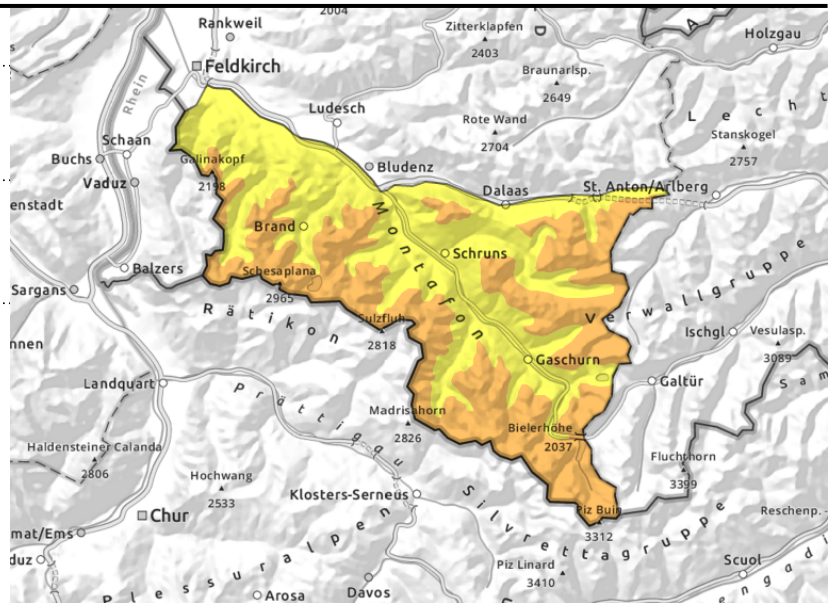


**Rätikon West, Rätikon Ost, Silvretta, Verwall**



>2000 m fresh trigger-prone snowdrifts

<2400 m steep slopes with smooth ground glide-snow avalanches, loose wet-snow avalanches



**Foehn storm will transport the loose old snow at high altitudes**

As a result of storm-strength foehn winds, fresh snowdrift accumulations will be generated. Avalanches are easily triggerable in the drifts, releases mostly small. Evaluate the snowdrifts with caution in steep terrain. In additional, avalanches can trigger in near-surface layers of the snowpack, in isolated cases reach medium size. Danger zones occur on north-facing slopes above 2400 m in very steep terrain, esp. in transitions from shallow to deep snow, e.g. at entries into gullies and bowls. Activities in backcountry demand experience in outlying terrain and the ability to assess avalanche dangers on-site, as well as a cautious route selection. Due to increasing wetness of the snowpack, gliding snow and wet-snow activity is increasing. Glide-snow avalanches can trigger below 2600 m at any time of day or night and reach large size. Caution urged below glide cracks. Due to rain impact, mostly small-sized wet loose-snow avalanches can be expected.

**Snowpack structure**

Due to strong southerly winds on Saturday, fresh trigger-prone snowdrift accumulations were generated. On Sunday, foehn winds will continue to intensify in velocity. Fresh snowdrift accumulations will be deposited on high-altitude shady slopes atop soft layers. On north-facing slopes above 2400 m, near-surface weak layers have persisted. The old snowpack is generally compact and stable. At low and intermediate altitudes it is thoroughly wet down to the ground. Clouds passing through will hamper nocturnal longwave outgoing radiation, a crust capable of bearing loads cannot form easily. Warmth is making the snowpack weaker, esp. in wind-protected terrain.

**Weather**

Nocturnal hours: Foehn wind will intensify in the classic valleys, mild. Sunday daytime: Foehn storm in the mountains. Sunny with harmless cloudbanks above the summits. At 2000 m: 0 degrees. Strong to stormy southerly winds.

**Outlook**

On Monday a mixture of sunshine and clouds. Avalanche danger levels are not expected to change significantly.

Translated by Jeffrey McCabe, [www.creativtrans.com](http://www.creativtrans.com)

**Avalanche problems**



**Danger ratings**



**Expositions**

