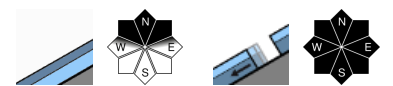


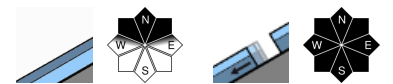
## Local danger zones on high-altitude shady slopes. Glide-snow avalanches persist.



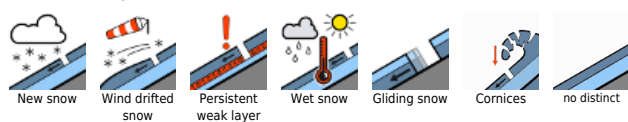
Lechquellengebirge, Lechtaler Alpen, Verwall, Rätikon West, Rätikon Ost, Silvretta



Voralpenbereich, Bregenzerwaldgebirge, Allgäuer Alpen



### Avalanche problems



### Danger ratings



### Expositions



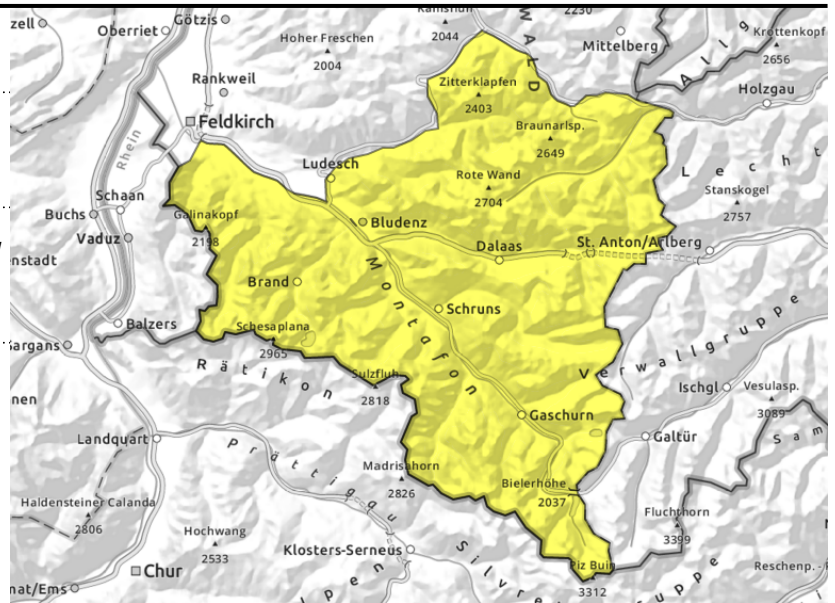
**Lechquellengebirge, Lechtaler Alpen, Verwall, Rätikon West, Rätikon Ost, Silvretta**



>2200 transitions from shallow to deep snow, e.g. at entries into gullies and bowls



<2400 m glide-snow avalanches on steep smooth slopes



**Avalanche prone locations blanketed, hard to recognize**

Avalanches can trigger in near-surface layers and, in isolated cases, reach medium size. Danger zones occur in steep ridgeline terrain, in transitions from shallow to deep snow, e.g. at entries into gullies and bowls. Activities in backcountry demand experience in outlying terrain and the ability to assess avalanche dangers on-site, as well as a cautious route selection. Glide-snow avalanches can trigger below 2600 m at any time of day or night and reach large size. Caution urged below glide cracks. Due to rain impact, only small-sized wet loose-snow avalanches can be expected.

**Snowpack structure**

The snowdrift layers from the beginning of the week have stabilized. On north-facing slopes at high altitudes the near-surface layers are still trigger-prone. The snowpack is mostly compact and stable, there is still powder on high-altitude shady slopes. Elsewhere the snowpack surface is moist and forms a melt-freeze crust at night which softens during the daytime. Up to 10 cm of fresh snow expected on Friday. Warm ground and the wet snowpack base reinforce the gliding movements of the entire snowpack.

**Weather**

Nocturnal hours: Gray skies, first at high altitudes, later on also at low altitudes, snowfall will set in during the early morning hours, snowfall level dropping to 1500 m. Friday daytime: The peaks will be shrouded by and large, light snowfall, snowfall level at 1300 m, only minor amounts expected. At 2000 m: -2 degrees. Light S/E winds.

**Outlook**

On Saturday, sunny and windy weather. Avalanche danger levels are not expected to change significantly. Glide-snow and moist loose-snow avalanches are still possible.

**Avalanche problems**



**Danger ratings**



**Expositions**



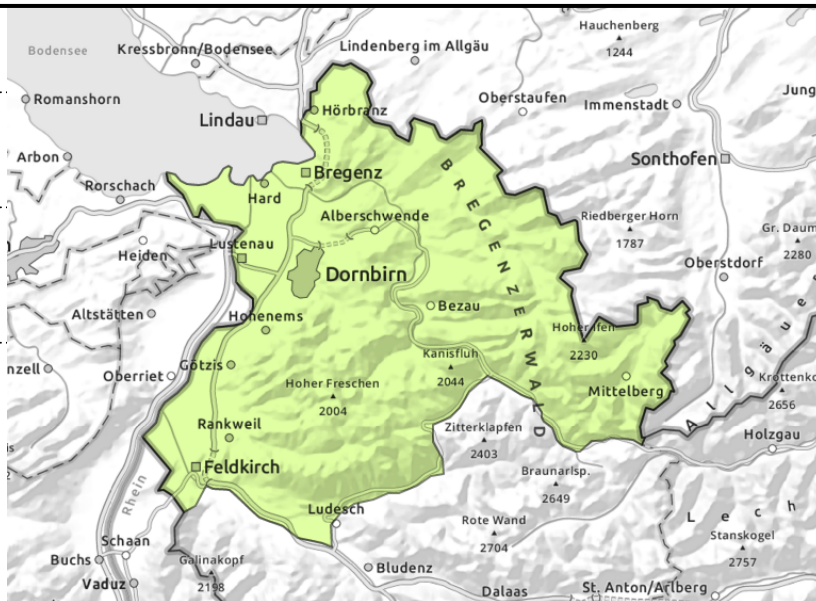
**Voralpenbereich, Bregenzerwaldgebirge, Allgäuer Alpen**



>2200 transitions from shallow to deep snow, e.g. at entries into gullies and bowls



steep smooth slopes and hillsides



**Weak near-surface layers locally at high altitudes**

Avalanches can trigger in near-surface layers and, in isolated cases, reach medium size. Danger zones occur in steep ridgeline terrain, in transitions from shallow to deep snow, e.g. at entries into gullies and bowls. Apart from the risks of being buried in snow masses, the danger of being swept along and taking a fall need to be considered. Glide-snow avalanches can trigger below 2600 m at any time of day or night and reach large size. Caution urged below glide cracks. With daytime warming, loose snowslides can be expected in sunny steep rocky terrain.

**Snowpack structure**

The snowdrift layers from the beginning of the week have stabilized. On north-facing slopes at high altitudes the near-surface layers are still trigger-prone. The snowpack is mostly compact and stable, there is still powder on high-altitude shady slopes. Elsewhere the snowpack surface is moist and forms a melt-freeze crust at night which softens during the daytime. Up to 10 cm of fresh snow expected on Friday. Warm ground and the wet snowpack base reinforce the gliding movements of the entire snowpack. Below 1400 m there is little snow on the ground.

**Weather**

Nocturnal hours: Gray skies, first at high altitudes, later on also at low altitudes, snowfall will set in during the early morning hours, snowfall level dropping to 1500 m. Friday daytime: The peaks will be shrouded by and large, light snowfall, snowfall level at 1300 m, only minor amounts expected. At 2000 m: -2 degrees. Light S/E winds.

**Outlook**

On Saturday, sunny and windy weather. Avalanche danger levels are not expected to change significantly. Glide-snow and moist loose-snow avalanches are still possible.

Translated by Jeffrey McCabe, [www.creativtrans.com](http://www.creativtrans.com)

**Avalanche problems**



**Danger ratings**



**Expositions**

