

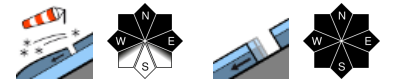
Considerable avalanche danger regionally due to fresh snowdrifts. Glide-snow avalanches persist.



Lechquellengebirge, Lechtaler Alpen, Verwall, Rätikon West, Rätikon Ost, Silvretta



Voralpenbereich, Bregenzerwaldgebirge, Allgäuer Alpen



Avalanche problems



Danger ratings



Expositions

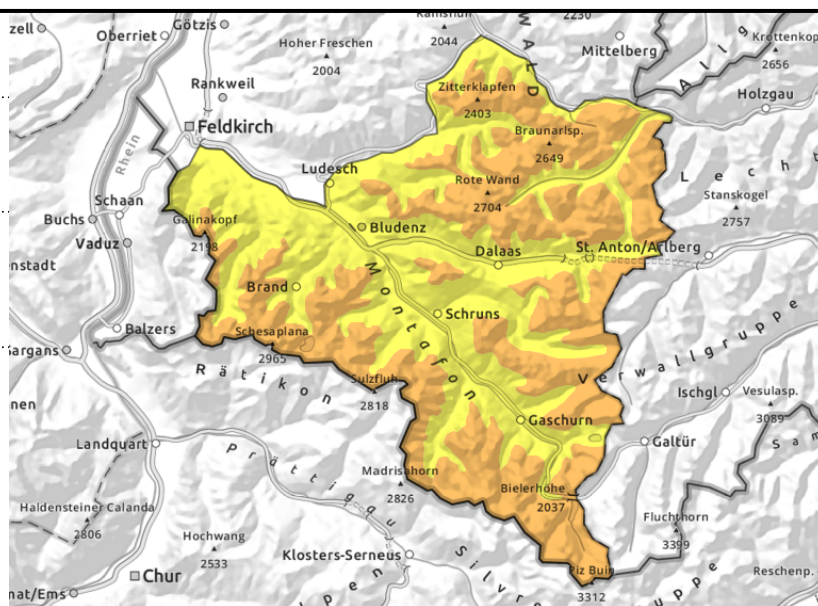


Lechquellengebirge, Lechtaler Alpen, Verwall, Rätikon West, Rätikon Ost, Silvretta



>2000 steep ridgeline terrain, behind discontinuities, in wind-loaded gullies and bowls

<2600 m glide-snow avalanches on steep smooth slopes



Fresh and older snowdrift accumulations trigger-prone due to strong southerly winds

Fresh snowdrifts are the main danger, often blanketed and hard to recognize. Danger zones occur in steep ridgeline terrain, behind discontinuities and in wind-loaded gullies and bowls and increase with ascending altitude. A small-to-medium slab avalanche or loose-snow avalanche can be triggered by 1 person (in high-alpine terrain larger). Activities in backcountry demand experience in outlying terrain and the ability to assess avalanche dangers on-site. Glide-snow avalanches can trigger below 2600 m at any time of day or night and reach large size. Caution urged below glide cracks.

Snowpack structure

Due to strong southerly winds, trigger-prone snowdrift accumulations were generated on Monday, with wind impact these will continue to grow on Tuesday. Fresh fresh snowdrifts lie deposited on high-altitude shady slopes atop soft layers or atop older snowdrifts on high-altitude shady slopes, otherwise atop a hard old snowpack surface. Bonding deteriorates with ascending altitude. Weak trigger-prone layers are evident inside the fresh snowdrift accumulations. On high-altitude shady slopes the surface is powdery, elsewhere there are often melt-freeze crusts and wind crusts evident. Warm ground and the wet snowpack base reinforce the gliding movements of the entire snowpack. Frequent glide-snow avalanches have been reported.

Weather

Nocturnal hours: Heavy cloud cover, persistent foehn impact. Tuesday daytime: Cloudy, foggy, some snowfall. Southerly winds noticeable, dry but the clouds will hardly disperse. At 2000 m: -3 to -1 degree. Strong southerly winds.

Outlook

On Wednesday, gray skies and minor snowfall with short intervals of brightness. Danger of dry-snow avalanches is not expected to change. Glide-snow avalanches are still possible.

Avalanche problems



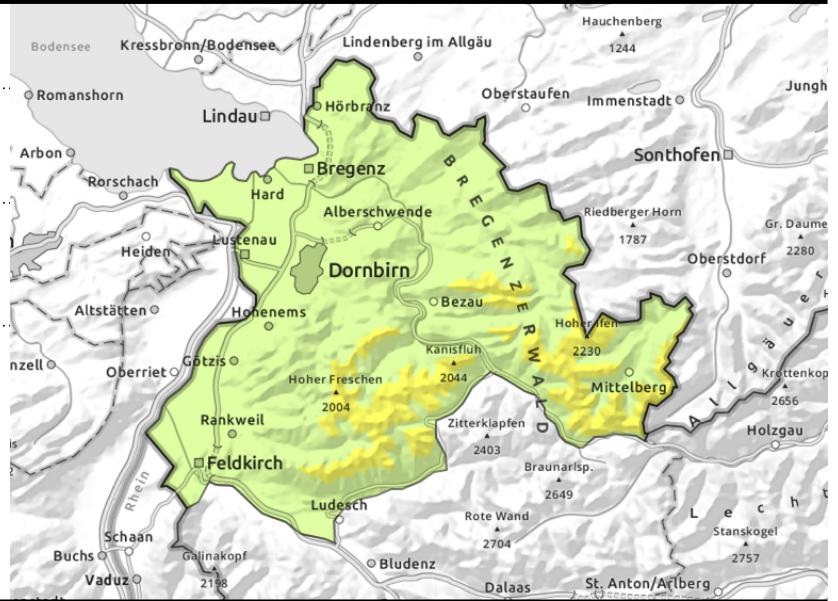
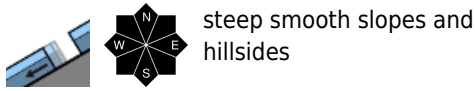
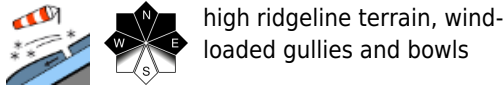
Danger ratings



Expositions



Voralpenbereich, Bregenzerwaldgebirge, Allgäuer Alpen



Fresh snowdrift accumulations trigger-prone at high altitudes

Main danger: fresh snowdrifts, often blanketed by loose fresh snow. Danger zones occur in steep ridgeline terrain, behind discontinuities and in wind-loaded gullies and bowls and increase with ascending altitude. A small-to-medium slab avalanche or loose-snow avalanche can be triggered by 1 person (sometimes larger). Beware the dangers of being swept along and forced to take a fall. Glide-snow avalanches are still possible, esp. with solar radiation. Caution urged below glide cracks.

Snowpack structure

Due to strong southerly winds, trigger-prone snowdrift accumulations were generated on Monday, with wind impact these will continue to grow on Tuesday. Fresh fresh snowdrifts lie deposited on high-altitude shady slopes atop soft layers or atop older snowdrifts on high-altitude shady slopes, otherwise atop a hard old snowpack surface. Bonding deteriorates with ascending altitude. Weak trigger-prone layers are evident inside the fresh snowdrift accumulations. On high-altitude shady slopes the surface is powdery, elsewhere there are often melt-freeze crusts and wind crusts evident. Warm ground and the wet snowpack base reinforce the gliding movements of the entire snowpack. Hardly any snow below 1400 m.

Weather

Nocturnal hours: Heavy cloud cover, persistent foehn impact. Tuesday daytime: Cloudy, foggy, some snowfall. Southerly winds noticeable, dry but the clouds will hardly disperse. At 2000 m: -3 to -1 degree. Strong southerly winds.

Outlook

On Wednesday, gray skies and minor snowfall with short intervals of brightness. Danger of dry-snow avalanches is not expected to change. Glide-snow avalanches are still possible.

Translated by Jeffrey McCabe, www.creativtrans.com

Avalanche problems



Danger ratings



Expositions

