

Considerable avalanche danger regionally due to fresh snowdrifts. Glide-snow avalanches persist.



2000 m
 Allgäuer Alpen, Lechquellengebirge, Lechtaler Alpen, Verwall, Rätikon West, Rätikon Ost, Silvretta



1800 m
 Voralpenbereich, Bregenzerwaldgebirge



Avalanche problems



Danger ratings



Expositions



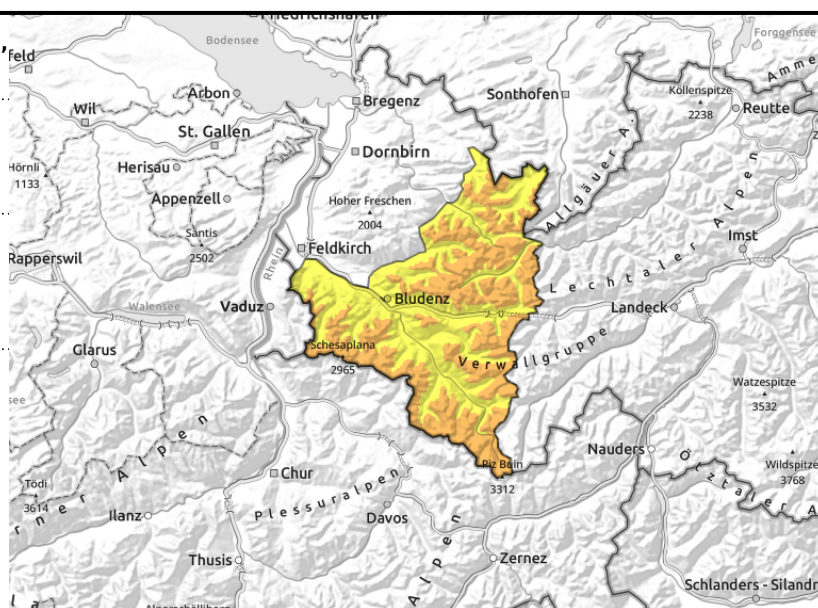
Allgäuer Alpen, Lechquellengebirge, Lechtaler Alpen, Verwall, Rätikon West, Rätikon Ost, Silvretta



>2000 steep ridgeline terrain, behind discontinuities, in wind-loaded gullies and bowls



<2600 m glide-snow avalanches on steep smooth slopes



Fresh and older snowdrift accumulations trigger-prone

Fresh snow and snowdrifts are the main danger, often hard to recognize. Danger zones occur in steep ridgeline terrain, behind discontinuities and in wind-loaded gullies and bowls and increase with ascending altitude. A small-to-medium slab avalanche or loose-snow avalanche can be triggered by 1 person (sometimes larger). Activities in backcountry demand experience in outlying terrain and the ability to assess avalanche dangers on-site. Naturally triggered small slab and loose-snow avalanches in rocky steep terrain are possible. Glide-snow avalanches can trigger below 2600 m at any time of day or night and reach large size. Caution urged below glide cracks.

Snowpack structure

Fresh snow and fresh snowdrifts lie deposited on high-altitude shady slopes atop soft layers or atop older snowdrifts on high-altitude shady slopes, otherwise atop a hard old snowpack surface. Intermittently strong S/SW winds have generated new drifts. Bonding deteriorates with ascending altitude. Weak trigger-prone layers are evident inside the fresh snowdrift accumulations. Warm ground and the wet snowpack base reinforce the gliding movements of the entire snowpack. Frequent glide-snow avalanches have been reported.

Weather

Nocturnal hours: Gray skies, occasional rain/snow showers, snowfall level at 1000 m. Sunday daytime: Quite sunny weather. In the Rätikon and Silvretta, some clouds could move in from the south. In the Allgäu Alps and on the Arlberg, scattered clouds. Southerly foehn winds above the treeline will be noticeable. At 2000 m: -4 to -2 degrees. Moderate-to-brisk S/SW winds.

Outlook

Monday will have compact cloud cover, foehn wind, mild temperatures. At high altitudes the loose snow will be transported, and will generate fresh snowdrift accumulations. Danger of dry-snow avalanches could increase regionally. Glide-snow avalanches are still possible.

Avalanche problems



Danger ratings




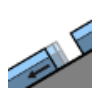
Expositions

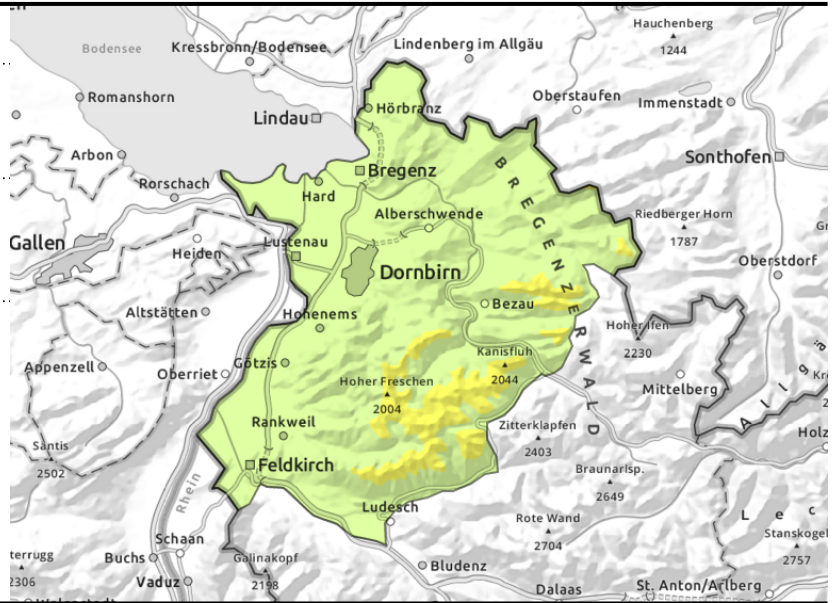


Voralpenbereich, Bregenzerwaldgebirge



 high ridgeline terrain, gullies and bowls

 steep smooth slopes and hillsides



Fresh snowdrift accumulations trigger-prone at high altitudes

Main danger: fresh snowdrifts, often blanketed by loose fresh snow. Danger zones occur in steep ridgeline terrain, behind discontinuities and in wind-loaded gullies and bowls and increase with ascending altitude. A small-to-medium slab avalanche or loose-snow avalanche can be triggered by 1 person (sometimes larger). Activities in backcountry demand experience in outlying terrain and the ability to assess avalanche dangers on-site. Naturally triggered small slab and loose-snow avalanches in rocky steep terrain are possible. Glide-snow avalanches are still possible, esp. with solar radiation. Caution urged below glide cracks.

Snowpack structure

A little fresh snow and snowdrifts lie deposited atop soft layers at high altitudes or atop older snowdrifts, otherwise otherwise atop a hard old snowpack surface. Occasionally gusty S/SW winds have generated fresh snowdrift accumulations, bonding is only adequate. Inside the fresh snow are often weak layers. Warm ground and the wet old snowpack plus the load of fresh snow on top of it are reinforcing gliding movements. Below 1400 m there is very little snow on the ground.

Weather

Nocturnal hours: Gray skies, occasional rain/snow showers, snowfall level at 1000 m. Sunday daytime: Quite sunny weather. In the Rätikon and Silvretta, some clouds could move in from the south. In the Allgäu Alps and on the Arlberg, scattered clouds. Southerly foehn winds above the treeline will be noticeable. At 2000 m: -4 to -2 degrees. Moderate-to-brisk S/SW winds.

Outlook

Monday will have compact cloud cover, foehn wind, mild temperatures. At high altitudes the loose snow will be transported, and will generate fresh snowdrift accumulations. Danger of dry-snow avalanches could increase regionally. Glide-snow avalanches are still possible.

Translated by Jeffrey McCabe, www.creativtrans.com

Avalanche problems



Danger ratings



Expositions

