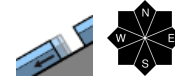


Considerable avalanche danger regionally due to fresh snow and wind. Glide-snow avalanches persist.



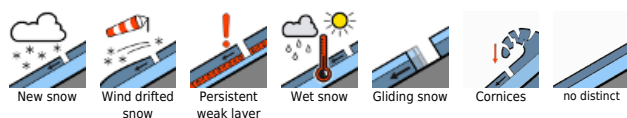
1800 m
 Allgäuer Alpen, Lechquellengebirge, Lechtaler Alpen, Verwall, Rätikon West, Rätikon Ost, Silvretta



forestline
 Voralpenbereich, Bregenzerwaldgebirge



Avalanche problems



Danger ratings

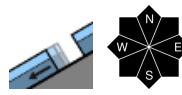


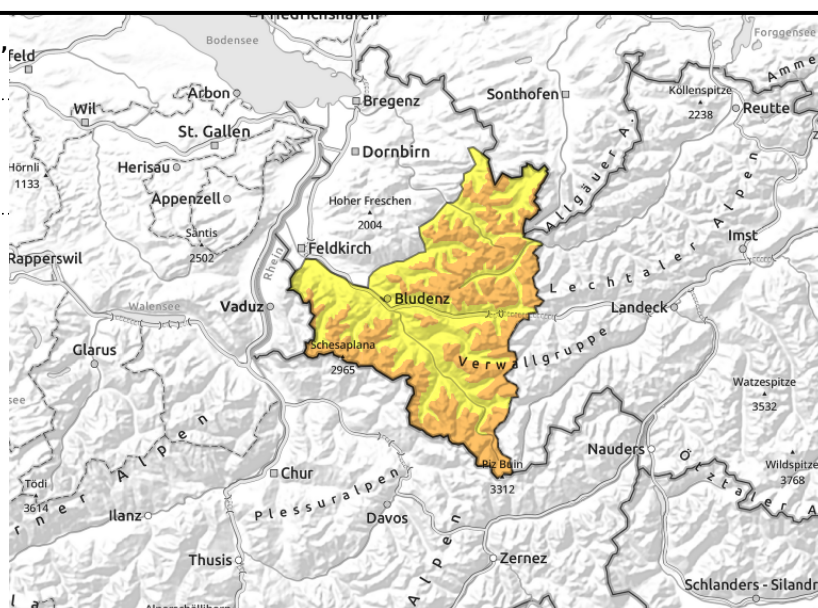
Expositions



Allgäuer Alpen, Lechquellengebirge, Lechtaler Alpen, Verwall, Rätikon West, Rätikon Ost, Silvretta



 <2600 m glide-snow avalanches on steep smooth slopes



Fresh snow and snowdrift accumulations trigger-prone

Fresh snow and snowdrifts are the main danger. Danger zones occur in steep ridgeline terrain, behind discontinuities and in wind-loaded gullies and bowls and increase with ascending altitude. A small-to-medium slab avalanche or loose-snow avalanche can be triggered by 1 person (sometimes larger). Activities in backcountry demand experience in outlying terrain and the ability to assess avalanche dangers on-site. Naturally triggered small slab and loose-snow avalanches in rocky steep terrain are possible. Glide-snow avalanches can trigger below 2600 m at any time of day or night and reach large size. Caution urged below glide cracks.

Snowpack structure

Fresh snow and fresh snowdrifts lie deposited on high-altitude shady slopes atop soft layers or atop older snowdrifts on high-altitude shady slopes, otherwise atop a hard old snowpack surface. Intermittently strong SW/NW winds have generated new drifts. Bonding deteriorates with ascending altitude. Weak trigger-prone layers are evident inside the fresh snowdrift accumulations. Warm ground and the wet snowpack base reinforce the gliding movements of the entire snowpack. Frequent glide-snow avalanches have been reported.

Weather

Nocturnal hours: Variably cloudy to heavily overcast skies with intermittent showers. Saturday daytime: Foehn conditions. Sunshine and clouds will alternate. Isolated snow showers and graupel showers cannot be excluded, but will be the exception. At 2000 m: -4 degrees. Moderate-to-brisk S/SW winds.

Outlook

Sunday will be very pleasant, but cold in the mountains. Avalanche danger levels are not expected to change significantly. Glide-snow avalanches in particular are still possible.

Avalanche problems



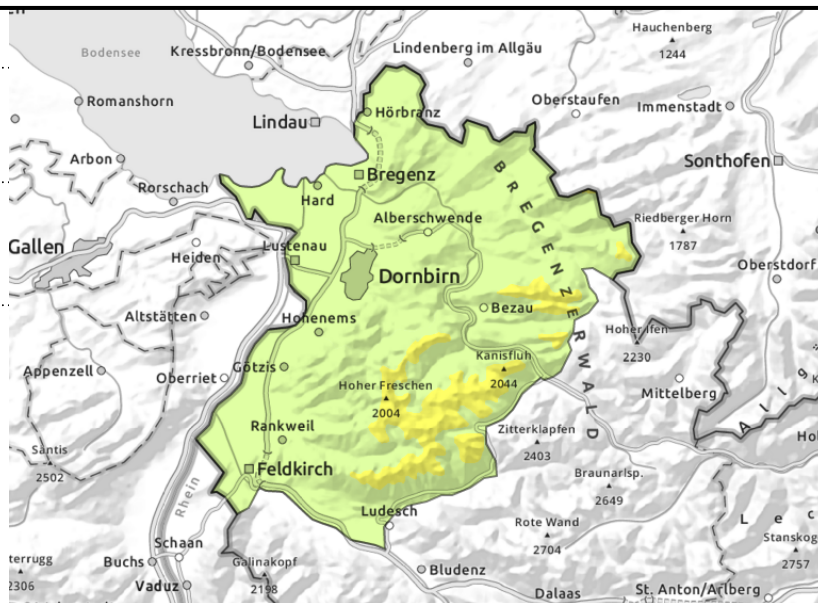
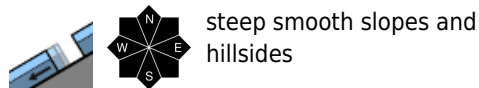
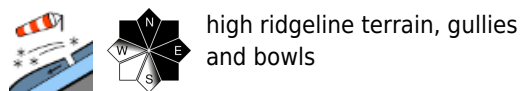
Danger ratings



Expositions



Voralpenbereich, Bregenzerwaldgebirge



Fresh snow and snowdrift accumulations trigger-prone at high altitudes

Fresh snowdrifts are the main danger, often blanketed by loose fresh snow. Danger zones occur on steep ridgeline slopes, behind discontinuities and in wind-loaded gullies and bowls, they increase with ascending altitude. A small-to-medium slab avalanche or loose-snow avalanche can be triggered by 1 person (sometimes larger). Activities in backcountry demand experience in outlying terrain and the ability to assess avalanche dangers on-site. Naturally triggered small slab and loose-snow avalanches in rocky steep terrain are possible. Glide-snow avalanches can trigger below 2600 m at any time of day or night and reach large size. Caution urged below glide cracks.

Snowpack structure

Fresh snowdrifts at high altitudes lie deposited atop soft layers or older snowdrifts, otherwise atop a hard old snowpack surface. Strong SW/NW winds intermittently have generated new snowdrift accumulations, bonding is only adequate. Inside the fresh snow are often weak layers. Warm ground and the wet old snowpack plus the load of fresh snow on top of it are reinforcing gliding movements. Below 1400 m there is very little snow on the ground.

Weather

Nocturnal hours: Variably cloudy to heavily overcast skies with intermittent showers. Saturday daytime: Foehn conditions. Sunshine and clouds will alternate. Isolated snow showers and graupel showers cannot be excluded, but will be the exception. At 2000 m: -4 degrees. Moderate-to-brisk S/SW winds.

Outlook

Sunday will be very pleasant, but cold in the mountains. Avalanche danger levels are not expected to change significantly. Glide-snow avalanches in particular are still possible.

Translated by Jeffrey McCabe, www.creativtrans.com

Avalanche problems



Danger ratings



Expositions

