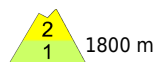
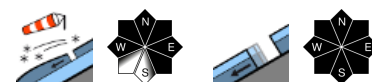


Moderate avalanche danger at high altitudes. Glide-snow avalanches persist.



Allgäuer Alpen, Bregenzerwaldgebirge, Lechquellengebirge, Lechtaler Alpen, Voralpenbereich, Verwall, Rätikon West, Rätikon Ost, Silvretta



Avalanche problems



Danger ratings







Expositions

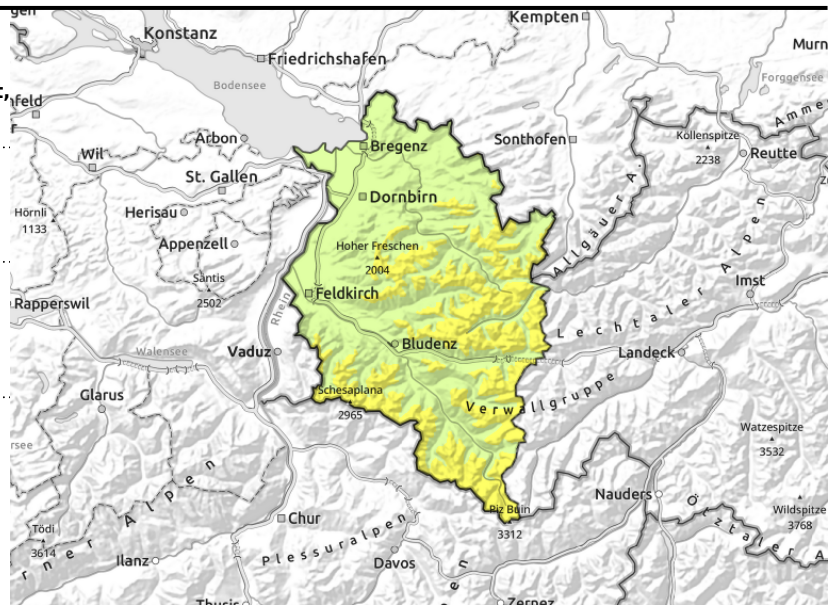


Allgäuer Alpen, Bregenzerwaldgebirge, Lechquellengebirge, Lechtaler Alpen, Voralpenbereich, Verwall, Rätikon West, Rätikon Ost, Silvretta



  **>2000 steep ridgeline terrain, behind discontinuities, in wind-loaded gullies and bowls**

  **<2600 m glide-snow avalanches on steep smooth slopes**



Pay close heed to snowdrift accumulations with ascending altitude

Freshly generated snowdrift accumulations are prone to triggering. Danger zones occur in steep ridgeline terrain, behind discontinuities and in wind-loaded gullies and bowls and increase with ascending altitude. A small-to-medium slab avalanche can be triggered by 1 person. Activities in backcountry demand experience in outlying terrain and the ability to assess avalanche dangers on-site.. Naturally triggered loose-snow avalanches in rocky steep terrain are possible. Glide-snow avalanches can trigger below 2600 m at any time of day or night and reach medium size. Caution urged below glide cracks.

Snowpack structure

Fresh snow and drifts were able to settle somewhat. On high-altitude shady slopes they lie deposited atop soft layers, otherwise atop a hard old snowpack surface. Bonding is generally good. Weak trigger-prone layers are evident inside the fresh snowdrift accumulations. In addition, in high shady terrain there are near-surface weak layers evident which are trigger-prone. Warm ground and the wet snowpack base reinforce the gliding movements of the entire snowpack. Frequent glide-snow avalanches have been reported. At lower altitudes the latest fresh snow lies on bare ground.

Weather

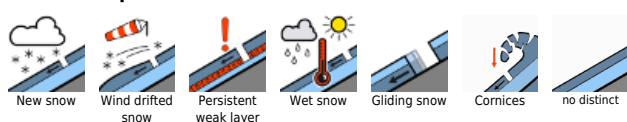
Nocturnal hours: high-altitude clouds, but no precipitation. Wednesday daytime: pleasant weather, good visibility, some cloudbanks but the sun will dominate. In the course of the afternoon the clouds will become heavier. At 2000 m: +2 degrees. Moderate to brisk W/SW winds.

Outlook

Thursday will have foehn-induced conditions, very mild, strong westerly winds (in foehn lanes, southerly winds). Avalanche danger levels are not expected to change significantly, but fresh snowdrifts can accumulate. Glide-snow/wet-snow avalanche danger will persist.

Translated by Jeffrey McCabe, www.creativtrans.com

Avalanche problems



Danger ratings



Expositions

