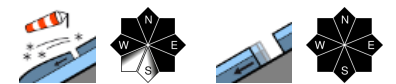


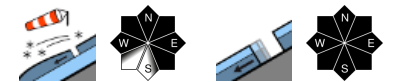
UPDATE: Considerable avalanche danger regionally due to fresh snow and wind



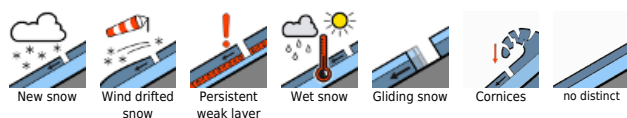
1800 m Rätikon Ost, Silvretta, Rätikon West



1600 m Allgäuer Alpen, Bregenzerwaldgebirge, Lechquellengebirge, Lechtaler Alpen, Voralpenbereich, Verwall



Avalanche problems



Danger ratings



Expositions



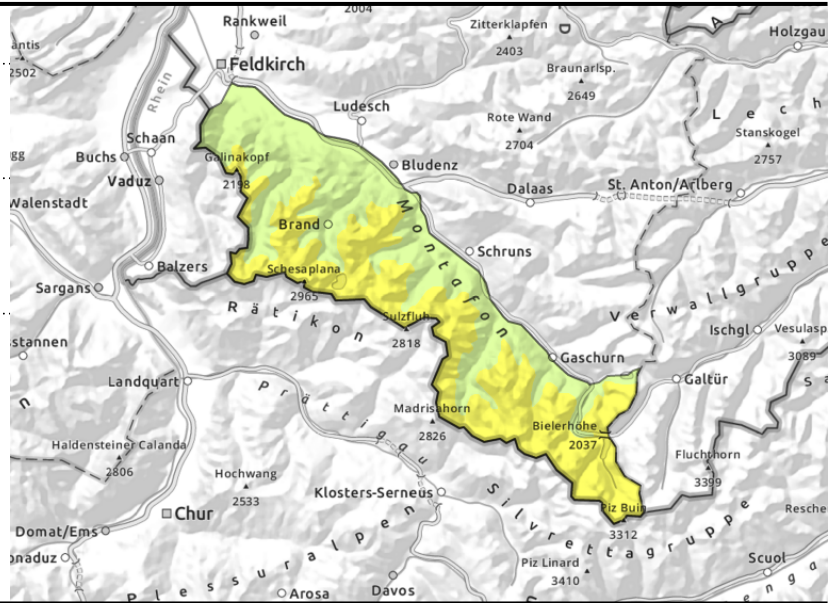
Rätikon Ost, Silvretta, Rätikon West



>1800 steep ridgeline terrain, behind discontinuities, in wind-loaded gullies and bowls



<2600 m glide-snow avalanches on steep smooth slopes



Fresh snowdrift accumulations prone to triggering

Freshly generated snowdrift accumulations are prone to triggering. Danger zones occur in steep ridgeline terrain, behind discontinuities and in wind-loaded gullies and bowls and increase with ascending altitude. A small-to-medium slab avalanche can be triggered by 1 person. Activities in backcountry demand experience in outlying terrain and the ability to assess avalanche dangers on-site.. Naturally triggered loose-snow avalanches in rocky steep terrain are possible. Glide-snow avalanches can trigger below 2600 m at any time of day or night and reach medium size. Caution urged below glide cracks.

Snowpack structure

Accompanied by intermittently strong winds there has been 15-20 cm of fresh snow registered, locally more. Particularly in ridgeline terrain, snowdrift accumulations have been generated, deposited atop soft layers, otherwise atop hard old snowpack layers. Weak trigger-prone layers are evident inside the fresh snowdrift accumulations. In addition, in high shady terrain there are near-surface weak layers evident which are trigger-prone. Warm ground and the wet snowpack base reinforce the gliding movements of the entire snowpack. Below 1400 m there is hardly any snow on the ground.

Weather

Tuesday daytime: initially reduced visibility due to clouds and snowfall down to 800 m. In the afternoon, improved visibility, intermittent sunshine. At 2000 m: -4 degrees. Moderate to brisk N/NW winds.

Outlook

Wednesday will be sunny, with increasing winds from the southwest, and somewhat warmer. Danger of dry-snow avalanches will not change significantly. Glide-snow avalanche danger will persist.

Avalanche problems



Danger ratings







Expositions

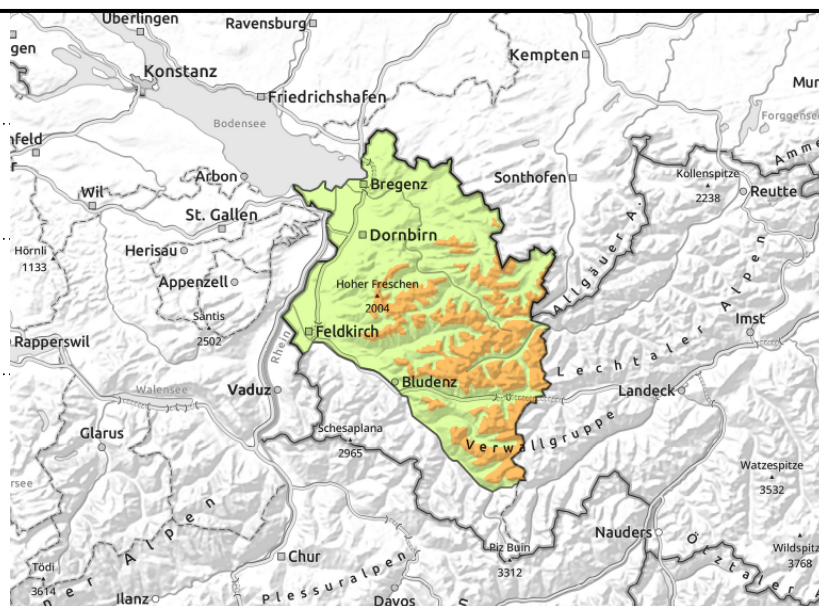


Allgäuer Alpen, Bregenzerwaldgebirge, Lechquellengebirge, Lechtaler Alpen, Voralpenbereich, Verwall



  >1600 steep ridgeline terrain, behind discontinuities, in wind-loaded gullies and bowls

  <2600 m glide-snow avalanches on steep smooth slopes



Pay close heed to snowdrifts with ascending altitude

Freshly generated snowdrift accumulations are prone to triggering. Danger zones occur in steep ridgeline terrain, behind discontinuities and in wind-loaded gullies and bowls and increase with ascending altitude. A small-to-medium slab avalanche can be triggered by 1 person. Activities in backcountry demand experience in outlying terrain and the ability to assess avalanche dangers on-site.. Naturally triggered loose-snow avalanches in rocky steep terrain are possible. Glide-snow avalanches can trigger below 2600 m at any time of day or night and reach medium size. Caution urged below glide cracks.

Snowpack structure

Accompanied by intermittently strong winds there has been 15-30 cm of fresh snow registered since yesterday, locally more. Particularly in ridgeline terrain, snowdrift accumulations have been generated, deposited atop soft layers, otherwise atop hard old snowpack layers. Weak trigger-prone layers are evident inside the fresh snowdrift accumulations. In addition, in high shady terrain there are near-surface weak layers evident which are trigger-prone. Warm ground and the wet snowpack base reinforce the gliding movements of the entire snowpack. Below 1400 m there is hardly any snow on the ground.

Weather

Tuesday daytime: initially reduced visibility due to clouds and snowfall down to 800 m. In the afternoon, improved visibility, intermittent sunshine. At 2000 m: -4 degrees. Moderate to brisk N/NW winds.

Outlook

Wednesday will be sunny, with increasing winds from the southwest, and somewhat warmer. Danger of dry-snow avalanches will not change significantly. Glide-snow avalanche danger will persist.

Translated by Jeffrey McCabe, www.creativtrans.com

Avalanche problems



Danger ratings



Expositions

