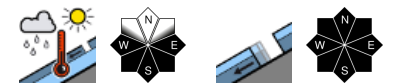


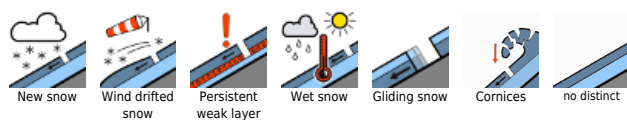
## Favorable conditions for winter sports enthusiasts, but wet-snow/glide-snow avalanches



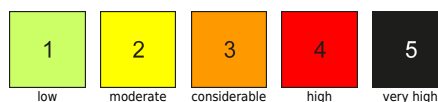
Rätikon Ost, Silvretta, Rätikon West, Bregenzerwaldgebirge, Allgäuer Alpen, Lechquellengebirge, Lechtaler Alpen, Verwall, Voralpenbereich



### Avalanche problems



### Danger ratings



### Expositions



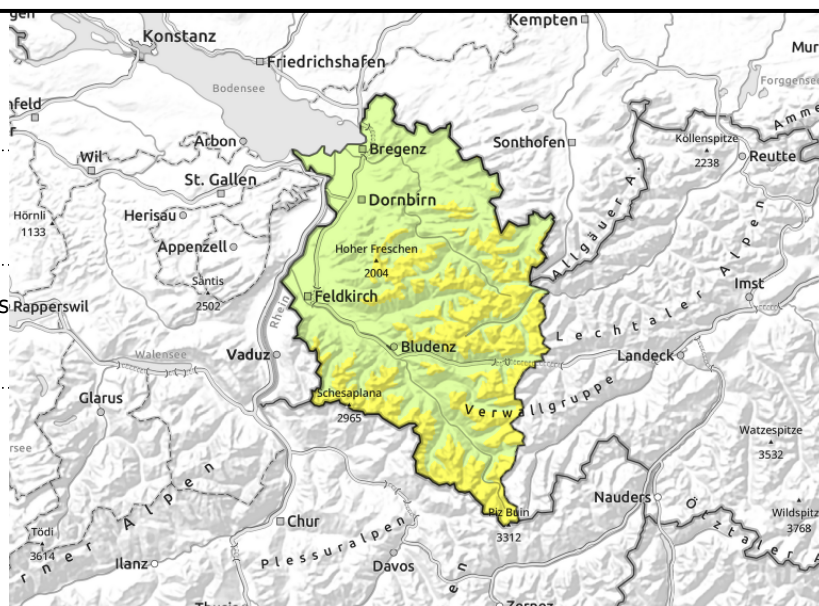
Rätikon Ost, Silvretta, Rätikon West, Bregenzerwaldgebirge, Allgäuer Alpen, Lechquellengebirge, Lechtaler Alpen, Verwall, Voralpenbereich



<2400 m: wet-snow avalanches due to daytime warmth



<2600 glide-snow avalanches on steep slopes over smooth ground



## Beware glide-snow/wet-snow avalanches, older snowdrift accumulations at high altitudes

For winter sports enthusiasts, predominantly favorable conditions prevail with moderate avalanche danger. Older snowdrifts and near-surface weak layers on shady slopes above 2400 m are still triggerable in isolated cases. One winter sports enthusiast can trigger a medium-sized slab avalanche. Apart from the dangers of being buried in snow masses, the risks of being swept along and forced to take a fall also need consideration. Beware cornices on ridges. Glide-snow avalanches are difficult to forecast or estimate. They can trigger in all aspects below 2600 m at any time of day or night and grow to medium size. Caution below glide cracks. Loose-snow slides possible on very steep sunny slopes.

### Snowpack structure

Above 1900 m there was minor snowfall. Due to moderate W/NW winds, small snowdrift accumulations are being generated; on shady slopes older snowdrifts and near-surface weak layers are in isolated cases still prone to triggering. The warm ground and wet snowpack base reinforce gliding snowpack movements, esp on E/S/W facing slopes. Below 1400 m there is very little snow on the ground.

### Weather

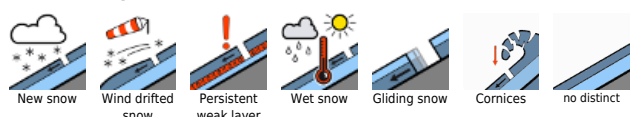
Nocturnal hours: Final showers will taper off, clouds will disperse only slowly. Sunday daytime: In the morning, sunny above 1500 m. In the afternoon, high-altitude clouds will move in, slowly become heavier. At 2000 m: -2 to +4 degrees. Light-to-moderate W/NW winds, brisker in the evening.

### Outlook

Due to fresh snow above 1300 m and brisk NW winds, avalanche danger will rise on Monday.

Translated by Jeffrey McCabe, [www.creativtrans.com](http://www.creativtrans.com)

#### Avalanche problems



#### Danger ratings



#### Expositions

