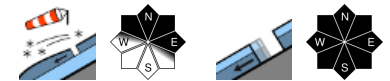


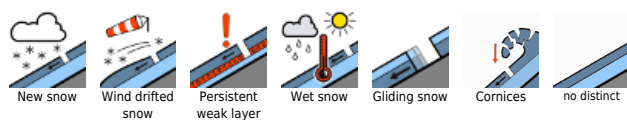
Favorable conditions for winter sports enthusiasts, but wet-snow/glide-snow avalanches



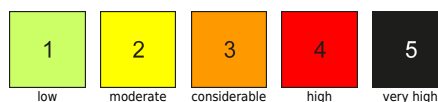
Rätikon Ost, Silvretta, Rätikon West, Bregenzerwaldgebirge, Allgäuer Alpen, Lechquellengebirge, Lechtaler Alpen, Verwall, Voralpenbereich



Avalanche problems



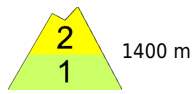
Danger ratings



Expositions



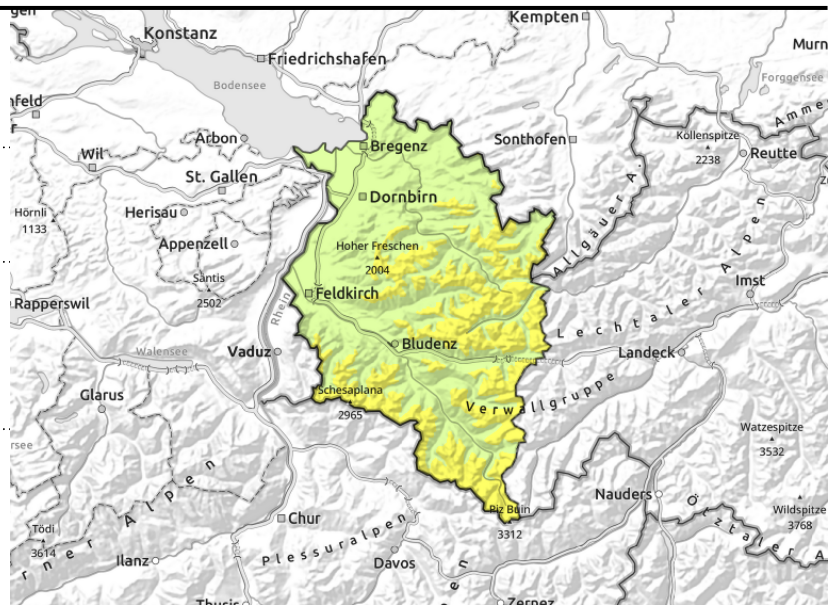
Rätikon Ost, Silvretta, Rätikon West, Bregenzerwaldgebirge, Allgäuer Alpen, Lechquellengebirge, Lechtaler Alpen, Verwall, Voralpenbereich



>2200 m often covered snowdrifts near ridges, in gullies, bowls, increasing with ascending altitude



<2600 m: glide-snow avalanches on steep smooth slopes and rock plates, forest clearances



Fresh snowdrifts at high altitudes. Glide-snow/wet-snow avalanches due to warmth.

For winter sports enthusiasts, predominantly favorable conditions prevail with moderate avalanche danger. In high ridgeline terrain, in gullies and bowls, freshly generated snowdrift accumulations require special attentiveness: they are often blanketed by fresher snowdrifts and are trigger-prone. Danger zones increase with ascending altitude. One winter sports enthusiast can trigger a medium-sized slab avalanche. Apart from the dangers of being buried in snow masses, the risks of being swept along and forced to take a fall also need consideration. Beware cornices on ridges. Glide-snow avalanches are difficult to forecast or estimate. They can trigger in all aspects below 2600 m at any time of day or night and grow to medium size. Caution below glide cracks. Loose-snow slides possible on very steep sunny slopes.

Snowpack structure

At high altitudes, older snowdrift accumulations lie mostly atop a stable old snowpack, on steep shady slopes, often atop soft layers. Covered drifts at high altitudes often lie atop a snowpack with weak near-surface layers sometimes with graupel, are thus prone to triggering. The warm ground and wet snowpack base reinforce gliding snowpack movements. Below 1400 m there is very little snow on the ground.

Weather

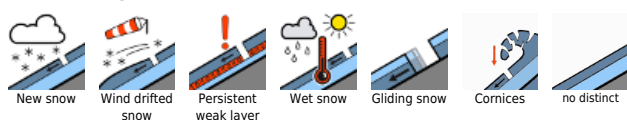
Nocturnal hours: High-altitude cloudbanks, all-in-all good nocturnal outgoing radiation. Thursday daytime: Intermittent sunshine, also spread-out cloudbanks. At 2000 m: -+ to +7 degrees. Initially brisk northwesterly winds, later slackening off.

Outlook

Slight foehn conditions on Friday, very mild. The danger of dry-snow avalanches will not change significantly. Due to rising daytime temperatures and solar radiation, wet slides and avalanches will be possible. Glide-snow avalanches will still be possible and hard to estimate and predict.

Translated by Jeffrey McCabe, www.creativtrans.com

Avalanche problems



Danger ratings



Expositions

