

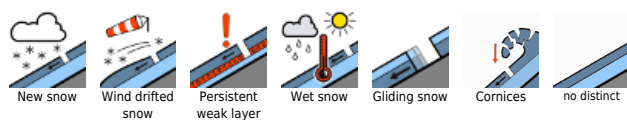
## Increasingly favorable conditions for winter sports enthusiasts



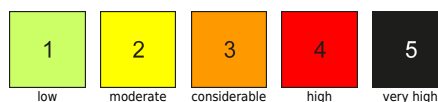
Rätikon Ost, Silvretta, Rätikon West, Bregenzerwaldgebirge, Allgäuer Alpen, Lechquellengebirge, Lechtaler Alpen, Verwall, Voralpenbereich



### Avalanche problems



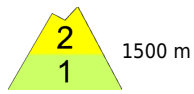
### Danger ratings



### Expositions



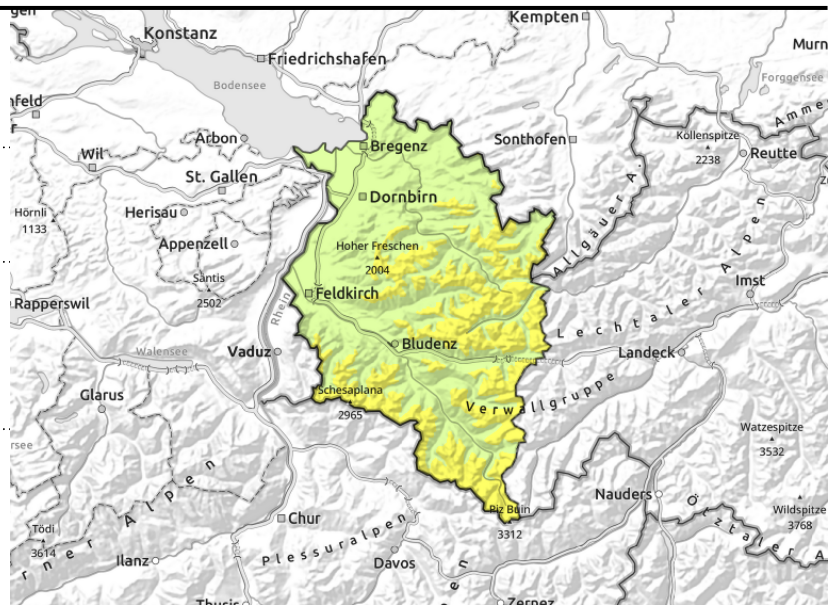
**Rätikon Ost, Silvretta, Rätikon West, Bregenzerwaldgebirge, Allgäuer Alpen, Lechquellengebirge, Lechtaler Alpen, Verwall, Voralpenbereich**



>2000 m often covered snowdrifts near ridges, in gullies, bowls, increasing with ascending altitude



<2600 m: glide-snow avalanches on steep smooth slopes and rock plates, forest clearances



## Fresh snowdrifts at high altitudes. Glide-snow avalanches persist.

In high ridgeline terrain, in gullies and bowls, freshly generated snowdrift accumulations require special attentiveness: they are often blanketed by fresher snowdrifts and are trigger-prone. Danger zones increase with ascending altitude. One winter sports enthusiast can trigger a medium-sized slab avalanche. Apart from the dangers of being buried in snow masses, the risks of being swept along and forced to take a fall also need consideration. Beware cornices on ridges. Glide-snow avalanches are difficult to forecast or estimate. They can trigger in all aspects below 2600 m at any time of day or night and grow to medium size. Caution below glide cracks. Loose-snow slides possible on very steep sunny slopes.

### Snowpack structure

At high altitudes the snowdrift accumulations generated over the last few days are covered. Fresh snow and drifts lie deposited atop a mostly stable old snowpack surface. On steep shady slopes often atop soft layers of old snow. Covered drifts at high altitudes often lie atop a snowpack with weak near-surface layers, are thus prone to triggering. The warm ground and wet snowpack base reinforce gliding snowpack movements. Below 1400 m there is very little snow on the ground.

### Weather

Nocturnal hours: Heavily clouded skies all night long, with intermittent precipitation. Up to 10 cm fresh snow expected at high altitudes. Tuesday daytime: Final snow showers in the morning, then the day will turn sunny. At 2000 m: -6 to -2 degrees. Moderate-to-brisk westerly/northwesterly winds.

### Outlook

On Wednesday, gray skies and a bit of precipitation to start with, snowfall above 1500-1800 m. The danger of dry-snow avalanches will not change significantly. Glide-snow avalanches will still be possible and hard to estimate and predict.

Translated by Jeffrey McCabe, [www.creativtrans.com](http://www.creativtrans.com)

#### Avalanche problems



#### Danger ratings



#### Expositions

