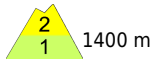


As a result of fresh snow/snowdrifts, slightly increasing avalanche danger. Glide-snow avalanches persist.



Rätikon Ost, Silvretta, Rätikon West, Bregenzerwaldgebirge, Allgäuer Alpen, Lechquellengebirge, Lechtaler Alpen, Verwall, Voralpenbereich



Avalanche problems



Danger ratings



Expositions



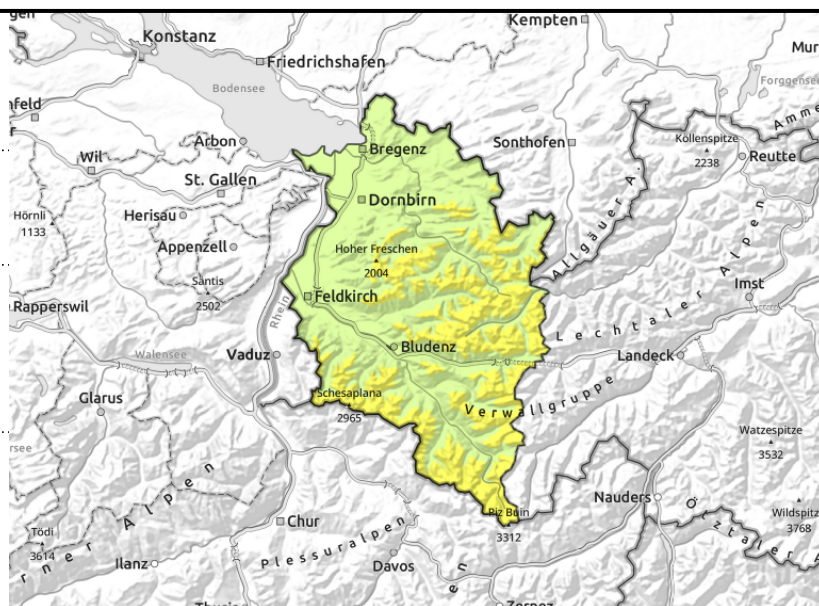
Rätikon Ost, Silvretta, Rätikon West, Bregenzerwaldgebirge, Allgäuer Alpen, Lechquellengebirge, Lechtaler Alpen, Verwall, Voralpenbereich



>1800 m small, trigger-prone snowdrifts near ridges, in gullies, bowls, increasing with ascending altitude



<2600 m: glide-snow avalanches on steep smooth slopes and rock plates, forest clearances



Fresh snowdrifts at high altitudes. Glide-snow avalanches persist.

In high ridgeline terrain, in gullies and bowls, freshly generated snowdrift accumulations require special attentiveness: they are often blanketed by fresher snowdrifts and are trigger-prone. Danger zones increase with ascending altitude. One winter sports enthusiast can trigger a medium-sized slab avalanche. Apart from the dangers of being buried in snow masses, the risks of being swept along and forced to take a fall also need consideration. Beware cornices on ridges. Glide-snow avalanches are difficult to forecast or estimate. They can trigger in all aspects below 2600 m at any time of day or night and grow to medium size. Due to lower temperatures, the danger of superficial wet-snow avalanches has receded.

Snowpack structure

As a result of 10-15 cm more fresh snow plus wind impact, additional small-sized snowdrift accumulations have been generated. Fresh snow and small snowdrifts lie deposited atop a stable old snowpack surface. Fresh drifts at high-alpine altitudes have weak layers in the uppermost part of the snowpack, often trigger-prone. The warm ground and wet snowpack base reinforce gliding snowpack movements. Below 1400 m there is very little snow on the ground.

Weather

Nocturnal hours: Clouds predominate, intermittent light snowfall above 1000 m. Monday daytime: Light low-pressure front conditions will bring continuing variably conditions. Compact clouds will bring intermittent snowfall and reduced visibility. Intermittently dry with a bit of sunshine. At 2000 m: -4 degrees. Moderate-to-brisk westerly winds.

Outlook

On Tuesday, quite sunny. During the course of the day, clouds will move in. Danger of dry-snow avalanches will not change significantly. Glide-snow avalanches will still be possible and hard to estimate and predict.

Translated by Jeffrey McCabe, www.creativtrans.com

Avalanche problems



Danger ratings



Expositions

