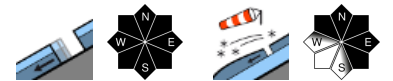


## UPDATE: slightly higher avalanche danger. Glide-snow avalanches persist.



1400 m

Rätikon Ost, Silvretta, Rätikon West, Bregenzerwaldgebirge, Allgäuer Alpen, Lechquellengebirge, Lechtaler Alpen, Verwall, Voralpenbereich



### Avalanche problems



### Danger ratings

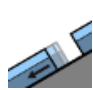





### Expositions

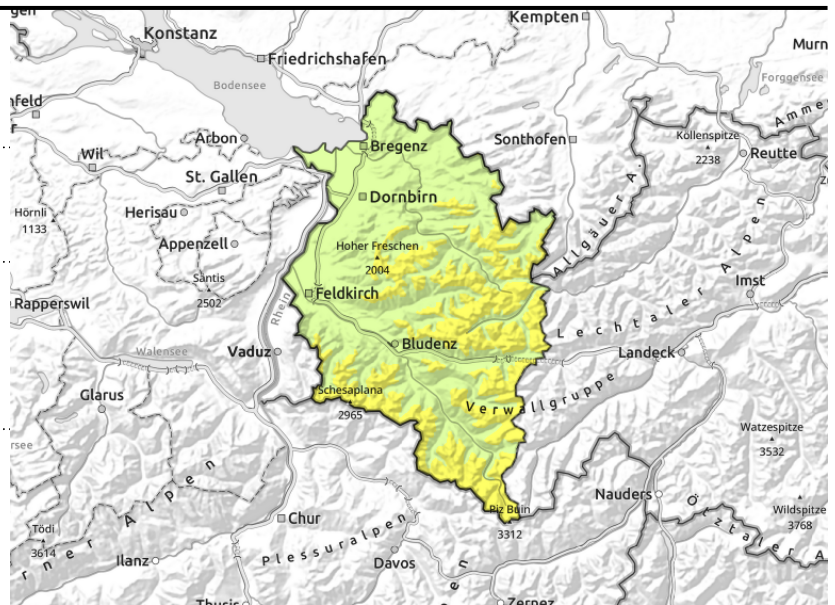


**Rätikon Ost, Silvretta, Rätikon West, Bregenzerwaldgebirge, Allgäuer Alpen, Lechquellengebirge, Lechtaler Alpen, Verwall, Voralpenbereich**



  <2600 m: glide-snow avalanches on steep smooth slopes and rock plates, forest clearances;

  >1800 m small, trigger-prone snowdrifts near ridges, in gullies, bowls



## Glide-snow/wet-snow avalanches persist. Fresh snowdrifts at high altitudes.

Glide-snow avalanches are the main danger, highly difficult to forecast or estimate. They can trigger in all aspects below 2600 m at any time of day or night and grow to medium size. Avoid zones below glide cracks. In zones with rain impacted, wet-snow avalanches are possible; fresh snowdrift accumulations require attentiveness in high-altitude ridgeline terrain, gullies, bowls, they are often trigger-prone (along with covered snowdrifts). Danger zones increase with ascending altitude. One winter sports enthusiast can trigger a medium-sized slab avalanche. Apart from the dangers of being buried in snow masses, the risks of being swept along and forced to take a fall also need consideration. Beware cornices on ridges.

### Snowpack structure

Due to nighttime rainfall the old snowpack has been weakened at low altitudes. Warm ground and wet snowbase reinforce gliding movements of the whole snowpack. Below 1400 m there is very little snow on the ground. As a result of 10-15 cm of fresh snow plus wind impact, further, mostly small-sized snowdrift accumulations will be generated. Fresh snow and small snowdrifts lie deposited atop a stable old snowpack surface. Fresh drifts at high-alpine altitudes have weak layers in the uppermost part of the snowpack, often trigger-prone.

### Weather

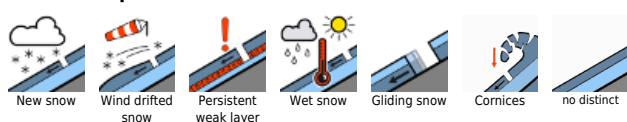
Sunday daytime: Brisk westerly winds will bring snow showers continually passing through, lessening as the day progresses. Visibility will remain reduced, but with brief bright intervals. Cooler than in recent days. At 2000 m: -3 degrees. Moderate westerly winds, often gusty.

### Outlook

Monday will bring variable conditions including rainfall/snowfall in showers, esp. in the northern regions. Further south, hardly any precipitation. Danger of dry-snow avalanches will not change significantly. Glide-snow avalanches will still be possible and hard to estimate and predict.

Translated by Jeffrey McCabe, [www.creativtrans.com](http://www.creativtrans.com)

#### Avalanche problems



#### Danger ratings



#### Expositions

