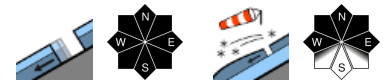


Small fresh high-altitude snowdrifts. Glide-snow avalanches persist.

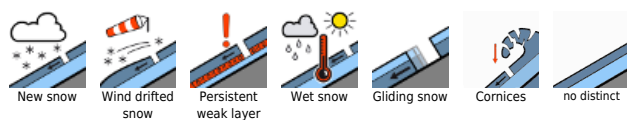


1200 m

Rätikon Ost, Silvretta, Rätikon West, Bregenzerwaldgebirge, Allgäuer Alpen, Lechquellengebirge, Lechtaler Alpen, Verwall, Voralpenbereich



Avalanche problems



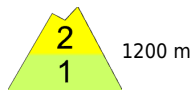
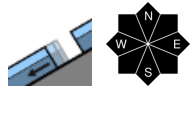
Danger ratings



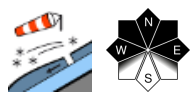
Expositions



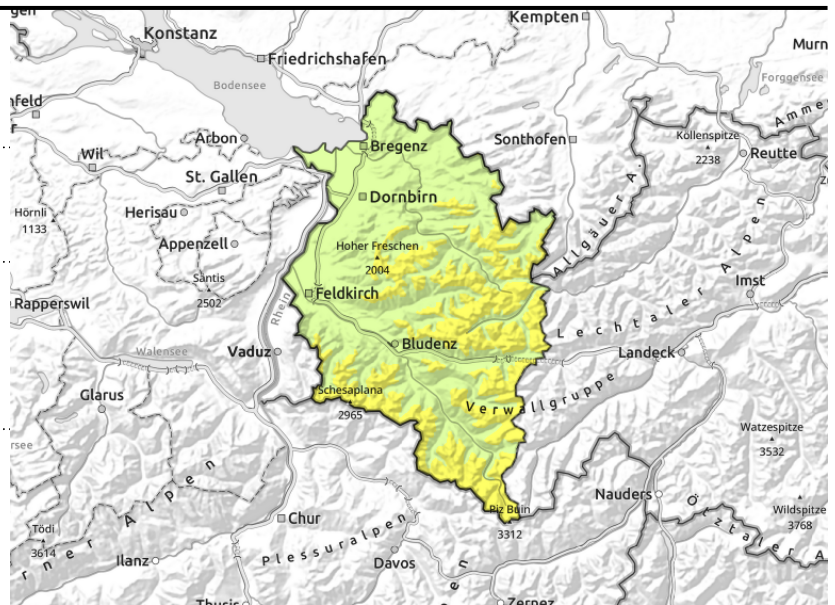
Rätikon Ost, Silvretta, Rätikon West, Bregenzerwaldgebirge, Allgäuer Alpen, Lechquellengebirge, Lechtaler Alpen, Verwall, Voralpenbereich

<2600 m: glide-snow avalanches on steep smooth slopes and rock plates, forest clearances;



>2000 m small, trigger-prone snowdrifts near ridges, in gullies, bowls



Glide-snow avalanches persist. Small fresh snowdrifts at high altitudes.

Main problem is still the danger of glide-snow avalanches which are hard to estimate and predict, can release at any time on sunny slopes up to 2600 m and grow to medium size. In zones where there is rain impact gliding snow activity is heightened. Caution below glide cracks. Favorable touring conditions prevail in outlying terrain, with low avalanche danger. Beware fresh drifts in high-altitude ridgeline terrain, gullies, bowls. In extremely steep terrain, older snowdrift accumulations can trigger small avalanches. Caution: acute danger of falling. Beware cornices on ridges.

Snowpack structure

Due to wind impact, fresh small snowdrift accumulations are still being generated at high altitudes, they lie deposited atop a stable snowpack. At very high altitudes the uppermost part of the snowpack evidences weak layers, only seldom triggerable in isolated cases. Warm ground and the moist-to-wet snowpack up to high altitudes continue to reinforce gliding movements, as numerous observed glide-snow avalanches confirm. Below 1200 m there is little snow on the ground.

Weather

Nocturnal hours: Foehn winds will persist during the night of heavily overcast skies. Dry. Saturday daytime: heavily overcast skies, but peaks free of fog. Foehn wind will permit bright intervals intermittently. At 2000 m: +2 degrees. Strong-to-stormy southerly winds.

Outlook

On Sunday, variable conditions with rain and snow showers (above 1000 m). The danger of dry-snow avalanches can increase somewhat, depending on amounts of fresh snowfall and wind. The gliding snow problem will persist: hard to estimate and predict.

Translated by Jeffrey McCabe, www.creativtrans.com

Avalanche problems



Danger ratings



Expositions

